



SII Software Package for Windows Installation Guide

Rev.04

[Products]

SLP800 Series

MP-B21L Series

MP-B30L Series

MP-B30 Series

MP-B20 Series

MP-A40 Series

RP-F10 Series

RP-G10 Series

RP-E10 Series

CAP06 Series

DSP-A01 Series

Seiko Instruments Inc.

Rev.01 November 2024
Rev.02 January 2025
Rev.03 March 2025
Rev.04 December 2025


Copyright© 2024-2025 by Seiko Instruments Inc. All rights reserved.

Microsoft® and Windows® are registered trademarks of Microsoft Corporation in the U.S., Japan, and other countries.

Bluetooth® is a registered trademark of Bluetooth SIG, Inc.

Seiko Instruments Inc. (hereinafter referred to as "SII") has prepared this manual for use by SII personnel, licensees, and customers. The information contained herein is the property of SII and shall not be reproduced in whole or in part without the prior written approval of SII.

SII reserves the right to make changes without notice to the specifications and materials contained herein and shall not be responsible for any damages (including consequential) caused by reliance on the materials presented, including but not limited to typographical, arithmetic, or listing errors.

SII  is a trademark of Seiko Instruments Inc.

Introduction

This manual describes the software packages provided by Seiko Instruments Inc. (hereinafter referred to as "SII").

This software package provides the following drivers and utilities. When installing the software packages, follow the instructions in "Chapter 2 Installation", before turning on the printer.

Depending on the printer to use, different software packages are available.

Printer	Software Package	Drivers and Utilities Included in Software Package
SLP850	<p>Smart Label Printer Software for Windows</p> <p>Hereafter, the printer used with this software package is referred to as the "SLP800 Series Printer".</p>	<p>Driver</p> <ul style="list-style-type: none">• SII Printer Driver for Windows <p>SDK</p> <ul style="list-style-type: none">• SII SDK for Windows• Smart Label Printer Software Development Kit• SII WEB SDK <p>Various utilities</p> <ul style="list-style-type: none">• SII Smart Label Creator• Copy Text to Smart Label Creator• Import DB to Smart Label Creator• TechnicalSupport• SII Communication Setting Utility• SII Log Setting Utility• SII Printer Setting Utility• SII Web SDK Server

Printer	Software Package	Drivers and Utilities Included in Software Package
MP-B21L MP-B30L MP-B30 MP-B20 MP-A40	SII Mobile Printer Software for Windows Hereafter, the printer used with this software package is referred to as the "Mobile Printer".	Driver <ul style="list-style-type: none"> • SII Printer Driver for Windows • SII OPOS • SII POS for .NET Service Object
RP-F10 RP-G10 RP-E10 DSP-A01	SII POS Printer Software for Windows Hereafter, the printer used with this software package is referred to as the "POS Printer".	SDK <ul style="list-style-type: none"> • SII SDK for Windows • SII WEB SDK^{*1}
CAP06	SII Printer Mechanism Software for Windows Hereafter, the printer used with this software package is referred to as the "Printer Mechanism".	Various utilities <ul style="list-style-type: none"> • SII Communication Setting Utility • SII Log Setting Utility • SII Printer Setting Utility • SII OPOS Setting Utility • SII POS for .NET Setting Utility • SII Web SDK Server^{*1} • SII Slideshow Setting Utility^{*2} • SII Display Setting Utility^{*2}

*1: Excluded in SII Printer Mechanism Software for Windows.

*2: Included only in SII POS Printer Software for Windows.

Caution

◆ The software package, excluding the SLP800 Series Printer, cannot be used in conjunction with the following existing software:

- SII Printer Driver for Windows Version 1.56 or earlier
- RP-E10 Series Printer Driver Version 1.61 or earlier
- MP-A40 Series Printer Driver Version 1.4.0 or earlier
- MP-B20 Series Printer Driver Version 1.1.7 or earlier

- (For RP-E10 series) SII OPOS Version 1.41 or earlier
- SII OPOS Version 1.49 or earlier

- SII POS for .NET Service Object Version 2.05 or earlier
- SII POS for .NET Service Object for Thermal Printer Mechanism Version 1.25 or earlier^{*1}

^{*1}: When IFD series or IFM series is used together with the CAP06 series, install SII POS for .NET Service Object for Thermal Printer Mechanism version 1.30 or later again.

If any of the above software is already installed, it will be uninstalled when installing the software package.

In principle, this manual is written on the basis of the following conditions:

- Screenshots and display layouts of Windows 11
- Operating instructions with a mouse and a keyboard

SII Printer Driver for Windows

SII Printer Driver for Windows (hereinafter referred to as "printer driver") is used when printing from a Windows application.

SII OPOS

SII OPOS is OpenPOS control based on UnifiedPOS Retail Peripheral Architecture Version 1.14.1 for controlling SII printers.

SII POS for .NET Service Object

SII POS for .NET Service Object is a class library that implements the device class interface defined by POS for .NET for controlling SII printers.

SII SDK for Windows

SII SDK for Windows is Software Development Kit that includes library files for directly controlling SII printers.

SII WEB SDK

SII WEB SDK is the library for printing from a JavaScript program on a Web browser to a SII printer.

Smart Label Printer Software Development Kit

Smart Label Printer Software Development Kit is Software Development Kit that includes library files for directly controlling SLP850 printer.

Various Utility

The following utilities are available when installing the software package. For more information about the utilities, see their respective manuals.

- | | |
|--------------------------------------|---|
| • Smart Label Creator | This is label creation software for SLP850.
See the online manual. |
| • Copy Text to Smart Label Creator | This is software for copying and pasting text data included with Smart Label Creator. |
| • Import DB to Smart Label Creator | This is software for importing the database included with Smart Label Creator. |
| • TechnicalSupport | This is software for retrieving the log for SLP850. |
| • SII Printer Setting Utility: | Sets the printer functions. |
| • SII Communication Setting Utility: | Sets the printer's communication settings. |
| • SII Log Setting Utility: | Sets the printer log. |
| • SII OPOS Setting Utility | Sets the functions of OPOS.
See "SII OPOS Application Programmers Guide". |
| • SII POS for .NET Setting Utility: | Sets the functions of POS for .NET.
See "SII POS for .NET Service Object Application Programmers Guide". |
| • SII Web SDK Server | Prints with the printers from JavaScript on a web browser using the SII Web SDK.
There is no manual. |
| • SII Slideshow Setting Utility: | Sets the slide data for DSP-A01.
There is no manual. |
| • SII Display Setting Utility: | Sets the functions for DSP-A01.
There is no manual. |

Operating System Abbreviations

The operating system abbreviations used in this manual are listed below.

Operating System	Abbreviation
Microsoft® Windows® 11	Windows 11
Microsoft® Windows® 11 IoT Enterprise	Windows 11 (Windows 11 IoT)
Microsoft® Windows® 10	Windows 10
Microsoft® Windows® 10 IoT Enterprise	Windows 10 (Windows 10 IoT)
Microsoft® Windows Server® 2025	Windows Server 2025
Microsoft® Windows Server® 2022	Windows Server 2022
Microsoft® Windows Server® 2019	Windows 10 (Windows Server 2019)
Microsoft® Windows Server® 2016	Windows 10 (Windows Server 2016)

Reference

- When referring to Microsoft® Windows® in general, the term "Windows" is used.

Chapter 1 Software Overview

1-1

1.1 Target Products.....	1-1
1.2 Operating Environment.....	1-3
1.2.1 System Environment.....	1-3
1.3 Startup Method	1-5

Chapter 2 Installation

2-1

2.1 Installation.....	2-2
2.1.1 Common Installation Procedure	2-2
2.1.2 Installation with USB Connection.....	2-4
2.1.3 Installation with Bluetooth Connection.....	2-6
2.1.4 Installation with Serial Connection.....	2-8
2.1.5 Installation with TCP/IP Connection	2-10
2.1.6 Installation of Shared Printer	2-12
2.2 Silent Installation.....	2-14
2.2.1 Silent Installation	2-14
2.2.2 Device Setup.....	2-14

Chapter 3 Uninstallation

3-1

3.1 Uninstallation	3-1
3.2 Silent Uninstallation	3-2
3.2.1 MsiExec.exe File	3-2
3.2.2 Setup(x64).exe File	3-2

Chapter 1 Software Overview

1.1 Target Products

This section describes the target products.

Printer	Driver Name	Interface
SLP800 Series	Smart Label Printer 850	USB ^{*1} Bluetooth ^{*2} Serial ^{*3}
MP-B21L Series	SII MP-B21L	USB ^{*1} Bluetooth ^{*2} TCP/IP ^{*4}
MP-B30L Series	SII MP-B30L	
MP-B30Series	SII MP-B30	
MP-A40 Series	SII MP-A40	
RP-F10 Series	SII RP-F10/G10	
MP-B20 Series	SII MP-B20	USB ^{*1} Bluetooth ^{*2}
RP-G10 Series	SII RP-F10/G10	USB ^{*1} Serial ^{*3}
CAP06 Series	SII CAP06-247	
	SII CAP06-347	
	SII CAP06-245	
RP-E10 Series	SII RP-E10	USB ^{*1} Bluetooth ^{*2} Serial ^{*3} TCP/IP ^{*4}
DSP-A01	SII DSP-A01	_*5

*1: USB standard: Full-Speed

*2: Bluetooth profile: SPP

*3: Serial standard: RS-232C

*4: TCP/IP protocol: Raw

*5: Varies depending on how Display is connected. For details, see "1.1 Target Products" in "SII Display Setting Utility for Windows User's Guide".

Caution

- ◆ For Bluetooth connection:
 - Operating conditions are as follows.
 - The target printer is not connected with another computer via Bluetooth.
 - Microsoft standard system driver is used.
 - Communication is available through a virtual serial port generated when installing via Bluetooth connection.
 - Bluetooth connection is not supported by Windows Server 2025, 2022, 2019, or 2016.
- ◆ For Serial connection:
 - Use the 8 bits length in the serial communication settings.
 - The communication settings of the port should match those of the printer. For the setting method, see "SII Printer Driver for Windows User's Guide".
 - To detect the connection status, connect at least TxD, RxD, DTR, and DSR terminals of the serial cable to the computer side and the printer side. In addition, RTS or CTS terminal should be connected depending on the communication settings of the serial connection on the printer side.
 - When the flow control of the serial connection is set to hardware, the way of operation fixing the DSR terminal to the MARK level is not supported.
- ◆ For TCP/IP connection:
 - Only Raw protocol is supported (LPR specification is ignored). (Except when the bidirectional support is disabled.)
 - The socket ports of 9100 and 26100 are used. When installing a firewall, allow the connection with these ports.

Reference

- Contact us for the operation test verified Bluetooth environment.

1.2 Operating Environment

1.2.1 System Environment

- SLP800 series

Item	Type	Printer Driver	Smart Label Creator	SII SDK Smart Label Printer Software Development Kit	SII WEB SDK	Utility		
						SII Communication Setting Utility	Copy Text to Smart Label Creator Import DB to Smart Label Creator TechnicalSupport SII Log Setting Utility SII Printer Setting Utility	SII Web SDK Server
Operating System	Windows 11	✓	✓	✓	✓	✓	✓	✓
	Windows 11 IoT	✓	✓	✓	✓	✓	✓	✓
	Windows 10	✓	✓	✓	✓	✓	✓	✓
	Windows 10 IoT	✓	✓	✓	✓	✓	✓	✓
	Windows Server 2025	✓	✓	✓	-	✓	✓	-
	Windows Server 2022	✓	✓	✓	-	✓	✓	-
	Windows Server 2019	✓	✓	✓	-	✓	✓	-
	Windows Server 2016	✓	✓	✓	-	✓	✓	-
.NET Framework ^{*1}	.NET Framework 4.0 to 4.8	✓	-	✓	✓ ^{*2}	✓	-	✓ ^{*2}

*1: Install it before installing the software package.

*2: Supports .NET Framework 4.6.2 or later.

- Other than SLP800 series

Item	Type	Driver			SII SDK	SII WEB SDK	Utility					
		Printer Driver	SII OPOS	SII POS for .NET Service Object			SII Communication Setting Utility	SII Log Setting Utility SII Printer Setting Utility SII Display Setting Utility	SII OPOS Setting Utility	SII POS for .NET Setting Utility	SII Web SDK Server	SII Slideshow Setting Utility
Operating System	Windows 11	✓	✓	✓	✓	✓	✓	✓	✓	✓	✓	✓
	Windows 11 IoT	✓	✓	✓	✓	✓	✓	✓	✓	✓	✓	✓
	Windows 10	✓	✓	✓	✓	✓	✓	✓	✓	✓	✓	✓
	Windows 10 IoT	✓	✓	✓	✓	✓	✓	✓	✓	✓	✓	✓
	Windows Server 2025	✓	-	-	✓	-	✓	✓	-	-	-	✓
	Windows Server 2022	✓	-	-	✓	-	✓	✓	-	-	-	✓
	Windows Server 2019	✓	-	-	✓	-	✓	✓	-	-	-	✓
	Windows Server 2016	✓	-	-	✓	-	✓	✓	-	-	-	✓
.NET Framework*1	.NET Framework 2.0 to 3.5	✓	-	✓	✓	-	✓	-	-	✓	-	-
	.NET Framework 4.0 to 4.8	✓	-	✓	✓	✓*3	✓	-	-	✓	✓*3	✓
Microsoft POS for .NET SDK*1	POS for .NET 1.12	-	-	✓*2	-	-	-	-	-	✓*2	-	-
	POS for .NET 1.14.1	-	-	✓	-	-	-	-	-	✓	-	-

*1: Install it before installing the software package.

*2: Not supported in MP-B21L.

*3: Supports .NET Framework 4.6.2 or later.

Also, see "UnifiedPOS Retail Peripheral Architecture Version 1.14.1" and "Microsoft Point of Service for .NET - POS for .NET v1.12 (or v1.14.1) SDK Documentation."

Caution

- ◆ Modern UI is not supported.
- ◆ Windows ARM is not supported.

1.3 Startup Method

After installing the software package, start the various utilities using the following methods.
For the installation, see "Chapter 2 Installation".

Start from Start Menu or Start Screen

- For Windows 11 and Windows Server 2025:
Select [All] or [All apps] - [SII Printer Software] or [Smart Label Printer] from the Start menu, and select the appropriate utility.
- For Windows 10 and Windows Server 2022:
Select [SII Printer Software] or [Smart Label Printer] from the Start menu, and select the appropriate utility.

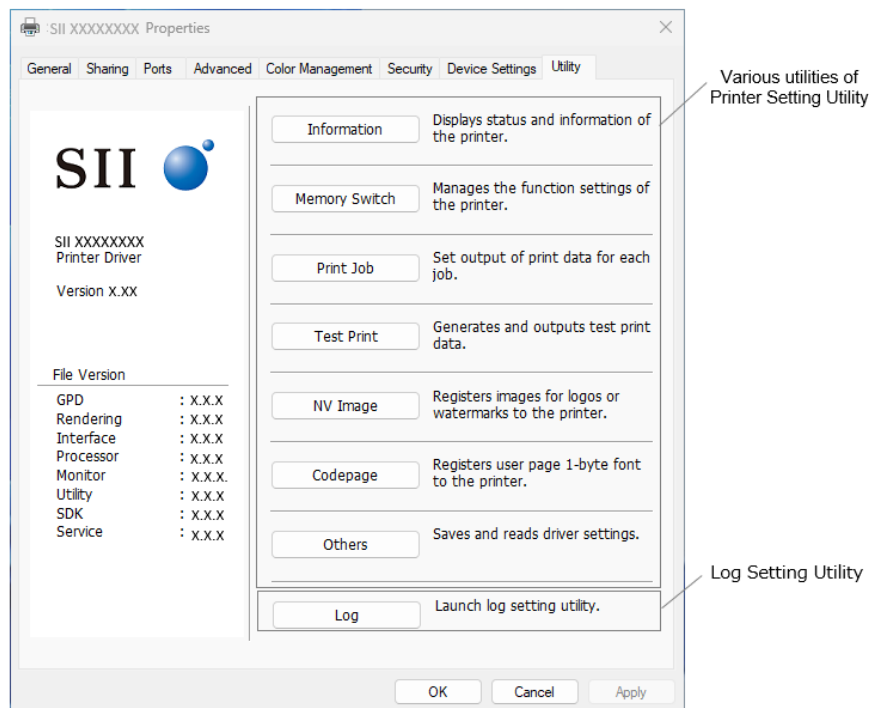
Reference

- For DSP-A01, the printer name at startup differs depending on whether it is used via a printer or used alone. For startup of DSP-A01, see "SII Display Setting Utility for Windows User's Guide".

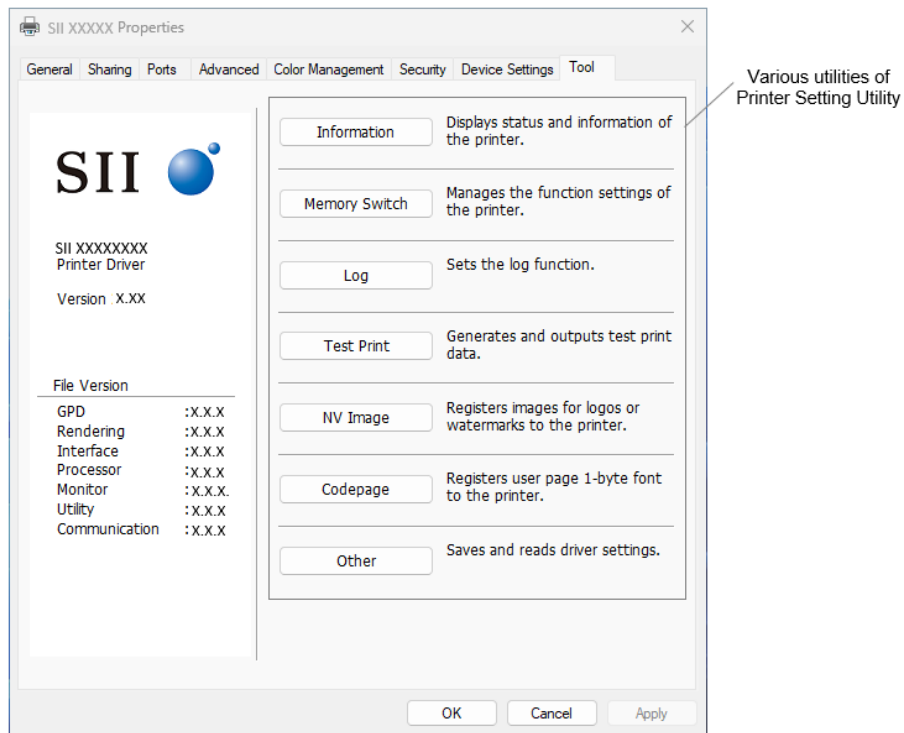
Start from Printer Properties

1. Display the sub menu by right clicking the printer icon displayed in [Printer Folder].
2. Select [Printer Properties] from the displayed sub menu.
3. Select the [Utility] or [Tool] tab in [Printer Properties] to display the following screen.
Click the appropriate menu.

SLP850, MP-B21L, MP-B30L, MP-B30, RP-F10, RP-G10, and CAP06 can select various utilities of Printer Setting Utility and Log Setting Utility.



MP-B20, MP-A40, and RP-E10 can select various utilities of Printer Setting Utility.



Chapter 2 Installation

This chapter describes the installation method.

Caution

- ◆ This installation requires logon to the computer with administrator privileges.

Reference

- When multiple printers using this printer driver are installed, from the second time or later installation, use the installed program [Add Printer].
[Add Printer] is available from the following.
 - For Windows 11 and Windows Server 2025:
Select [All] or [All apps] - [SII Printer] or [Smart Label Printer] - [Add Printer] from Start menu.
 - For Windows 10 and Windows Server 2022:
Select [SII Printer] or [Smart Label Printer] - [Add Printer] from Start menu.
- When DSP-A01 is used via a printer, set the printer that supports DSP-A01 during installation.
When DSP-A01 is used alone, set the printer that supports DSP-A01 during installation.
After that, connect DSP-A01 to the computer with a USB cable. When reconnecting the USB cable, connect it to the same USB port as when installing the software.

2.1 Installation

This section describes the new installation method.

Caution

- ◆ Do not install more than 1 printer for the same communication port.

2.1.1 Common Installation Procedure

This section describes the procedure of starting installation used for every connection.

1. When the [Install start] window is displayed, click the [Next >] button.

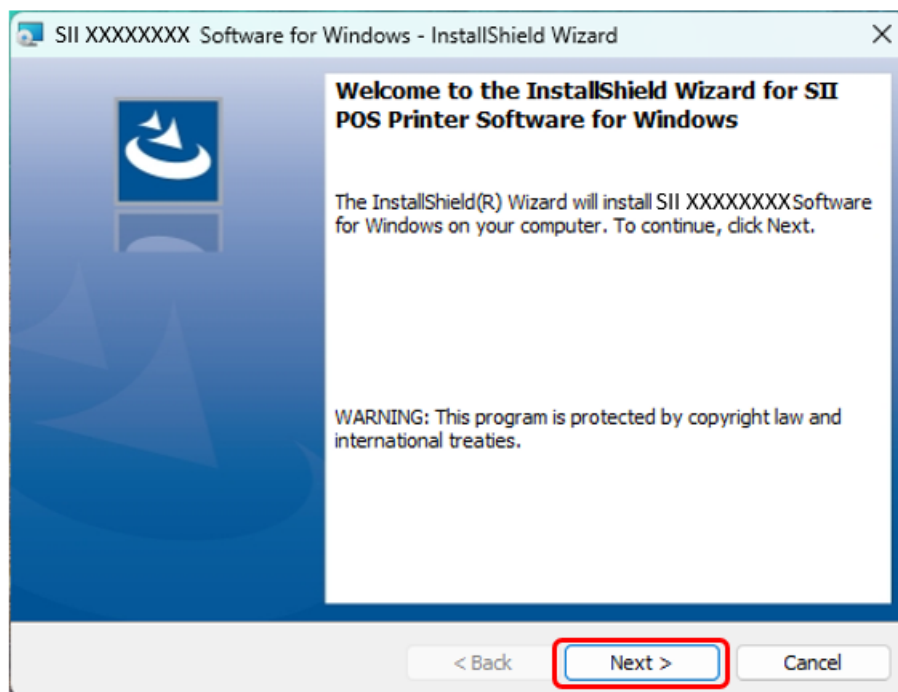


Figure 2-1 [Install start] Window

2. When the [SOFTWARE LICENSE AGREEMENT] is displayed, read it carefully, select "I accept the terms in the license agreement", and then click the [Next >] button.

3. When [Setup type selection] is displayed, select "Complete", and then click the [Next >] button.
When only printer driver is installed, select "Custom", and select the program functions according to the display.

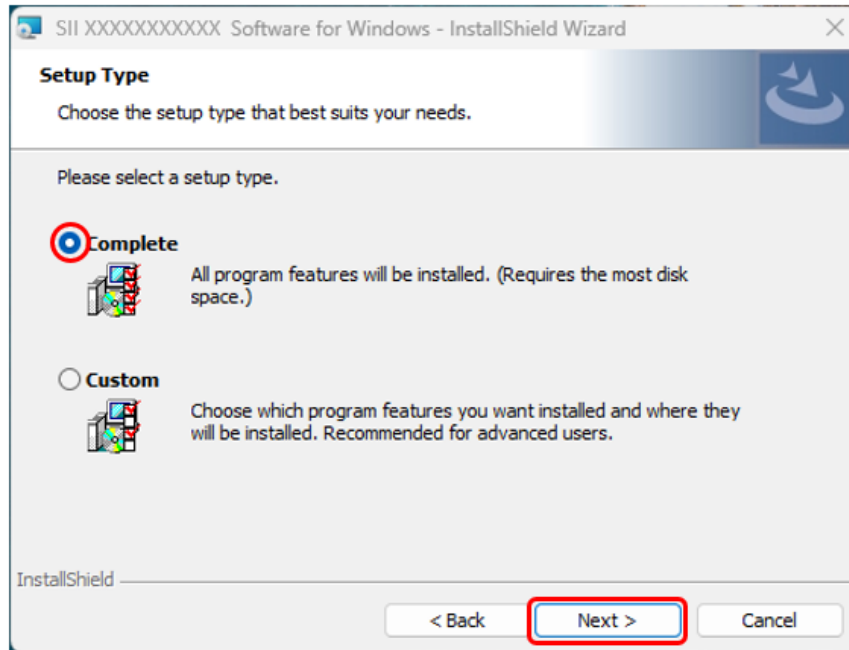


Figure 2-2 [Setup type selection] Window

4. When the [Installation confirmation] window is displayed, click the [Install] button.

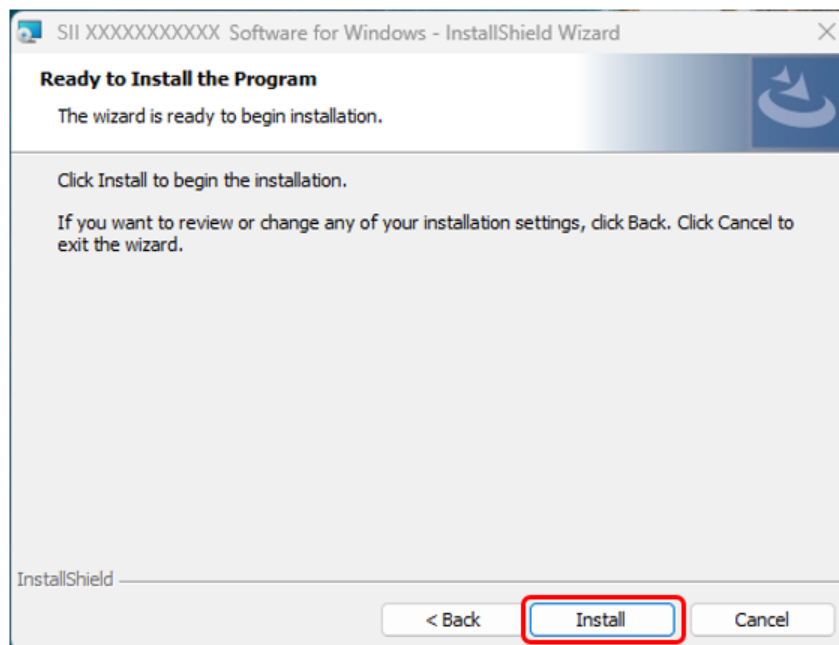


Figure 2-3 [Installation confirmation] Window

The subsequent procedure varies depending on the connection method with the printer. For the USB, proceed to "2.1.2 Installation with USB Connection". For Bluetooth, proceed to "2.1.3 Installation with Bluetooth Connection". For Serial, proceed to "2.1.4 Installation with Serial Connection". For TCP/IP, proceed to "2.1.5 Installation with TCP/IP Connection". For using shared printer, proceed to "2.1.6 Installation of Shared Printer".

2.1.2 Installation with USB Connection

This section describes the installation procedure of the USB connection.

Caution

- ◆ For the USB connection, keep the printer power off until being instructed to do so in this manual.

5. When the [Completion] window is displayed, click the [Finish] button.

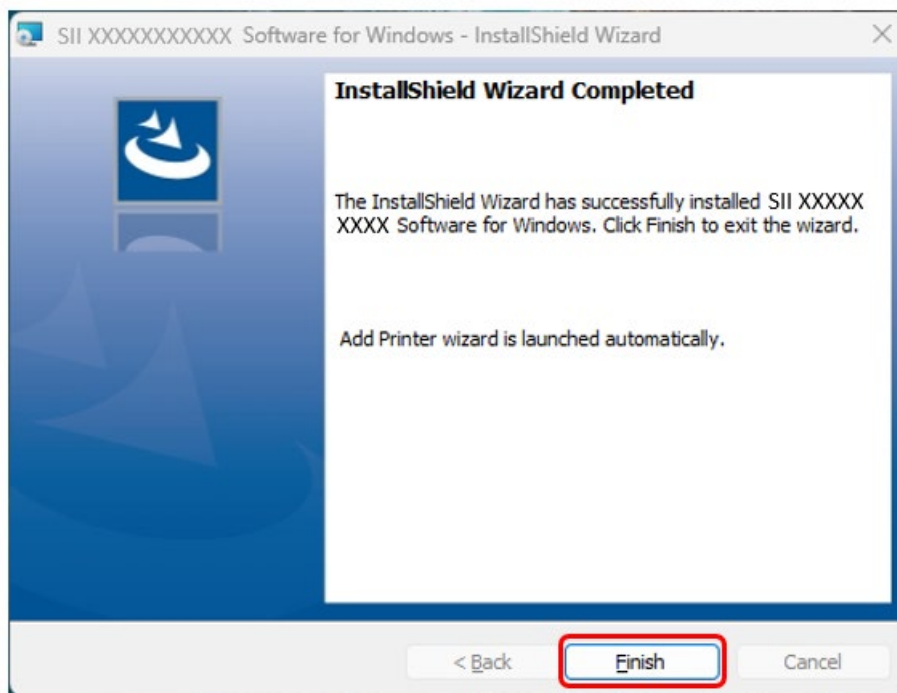


Figure 2-4 [Completion] Window (USB Connection)

- When the [Add printer] window is displayed, select the model and the interface, and click the [Next] button.

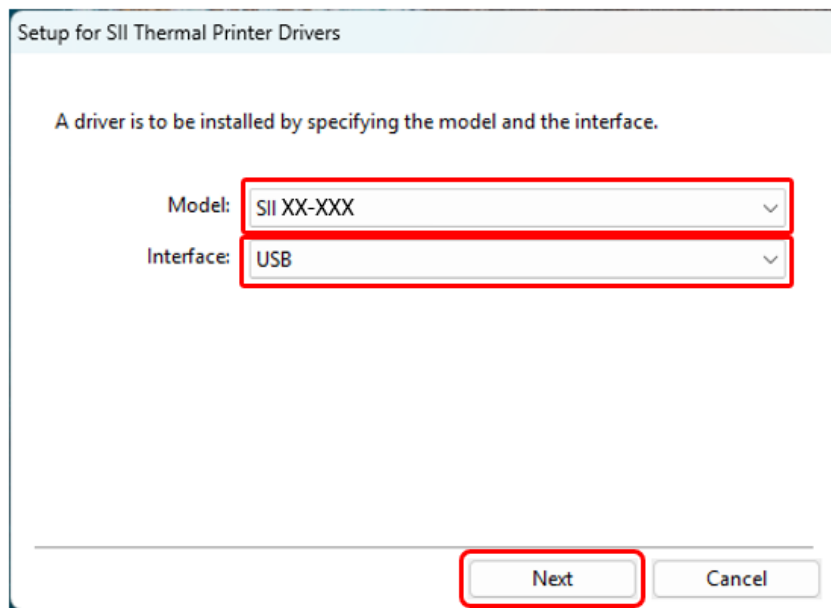


Figure 2-5 [Add printer] Window (USB Connection)

- Connect the printer and the computer by the USB cable, and turn on the printer. The printers are displayed on the [Install printer] window, select the appropriate printer and click the [Install] button.

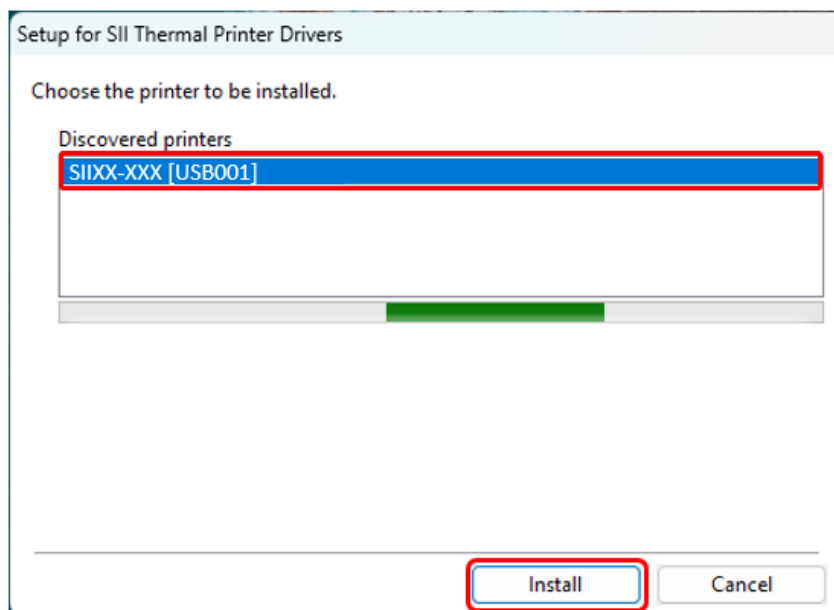


Figure 2-6 [Install printer] Window (USB Connection)

- Automatically creates configuration information for OPOS and POS for .NET drivers using the selected model and interface information.

When referring to or changing the setting values, see the following manuals.

- OPOS: SII OPOS Application Programmer's Guide
- POS for .NET: SII POS for .NET Service Object Application Programmer's Guide

Caution

- ◆ When reconnecting the USB cable once removed after installing the printer driver successfully, connect it to the same USB port used to install the driver. When the printer is connected to a different USB port on the computer, the host recognizes it as another printer, and may prompt you to install the printer driver again.

2.1.3 Installation with Bluetooth Connection

Caution

- ◆ When using Bluetooth connection, the printer cannot be used from multiple hosts simultaneously.
- ◆ For the Bluetooth connection, keep the printer power off until being instructed to do so in this manual.

This section describes the installation procedure for Bluetooth connection.

5. When the [Completion] window is displayed, click the [Finish] button.

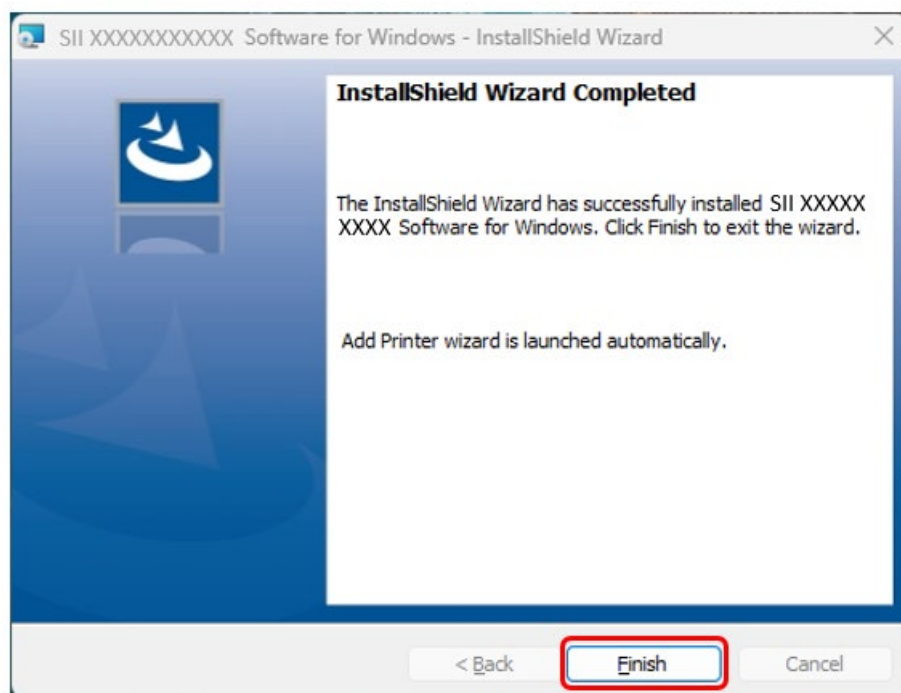


Figure 2-7 [Completion] Window (Bluetooth Connection)

- When the [Add printer] window is displayed, select the model and the interface, and click the [Next] button.

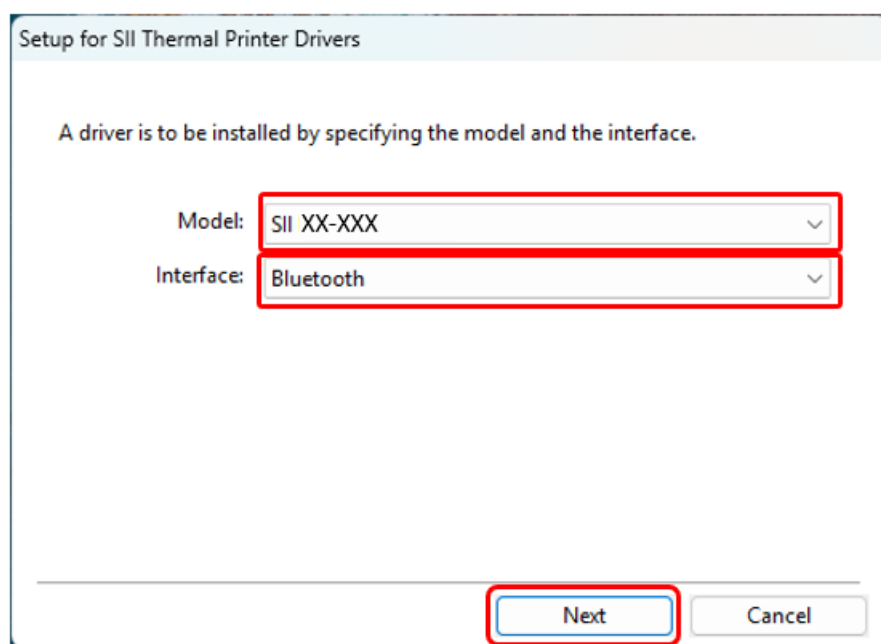


Figure 2-8 [Add printer] Window (Bluetooth Connection)

- When the [Install printer] window is displayed, press the power switch of the printer for 7 seconds or more.
When pairing mode starts, the printers are displayed on the [Install printer] window, select the appropriate printer and click the [Install] button. The printer driver is installed.

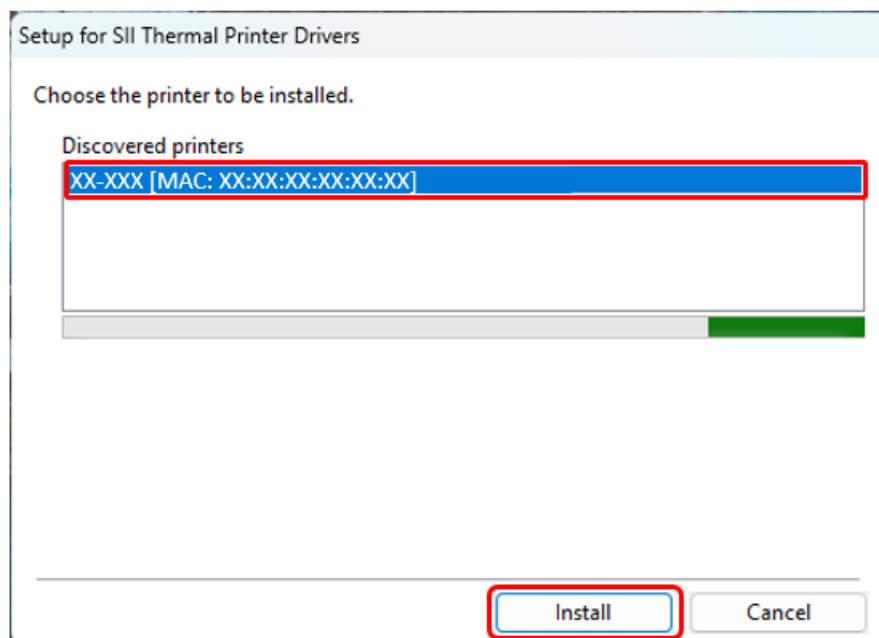


Figure 2-9 [Install printer] Window (Bluetooth Connection)

8. Automatically creates configuration information for OPOS and POS for .NET drivers using the selected model and interface information.
When referring to or changing the setting values, see the following manuals.
 - OPOS: SII OPOS Application Programmer's Guide
 - POS for .NET: SII POS for .NET Service Object Application Programmer's Guide

2.1.4 Installation with Serial Connection

This section describes the installation procedure of the serial connection.

5. When the [Completion] window is displayed, and click the [Finish] button.

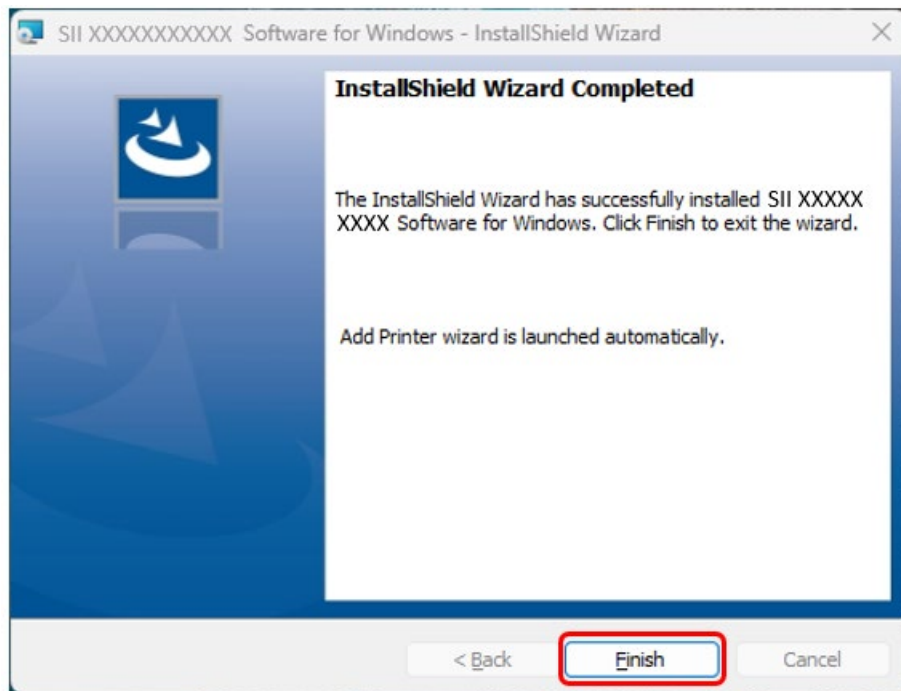


Figure 2-10 [Completion] Window (Serial Connection)

- When the [Add printer] window is displayed, select the model and the interface, and click the [Next] button.

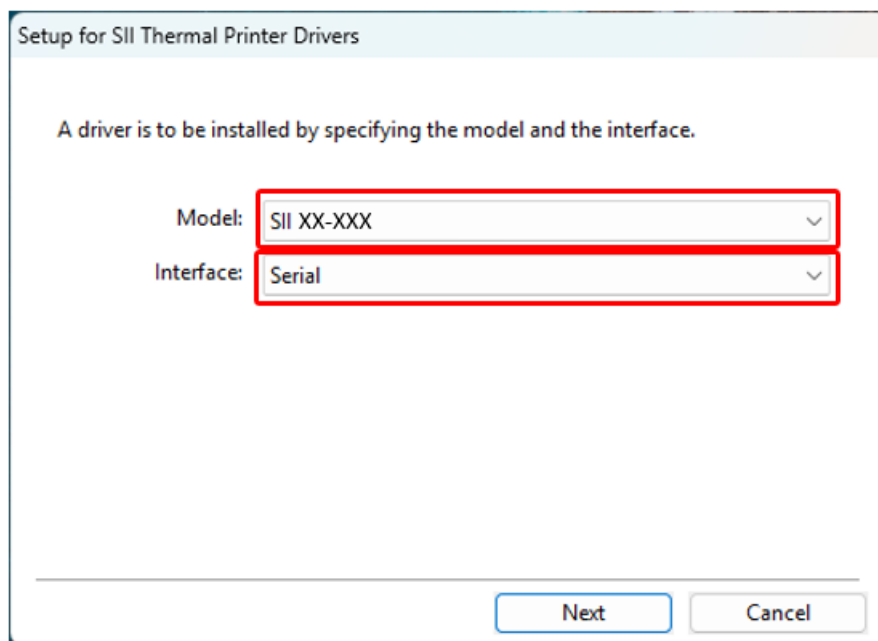


Figure 2-11 [Add printer] Window (Serial Connection)

- When the [Install printer] window is displayed, select the appropriate port and click the [Install] button.
The printer driver is installed.

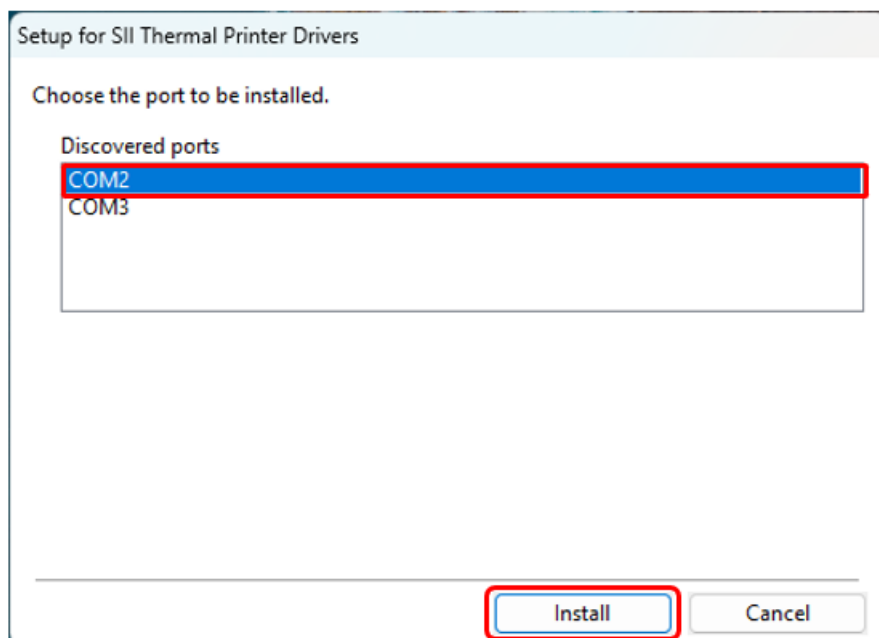


Figure 2-12 [Install printer] Window (Serial Connection)

8. Automatically creates configuration information for OPOS and POS for .NET drivers using the selected model and interface information.
When referring to or changing the setting values, see the following manuals.
 - OPOS: SII OPOS Application Programmer's Guide
 - POS for .NET: SII POS for .NET Service Object Application Programmer's Guide

2.1.5 Installation with TCP/IP Connection

This section describes the installation procedure of the TCP/IP connection.

5. When the [Completion] window is displayed, and click the [Finish] button.

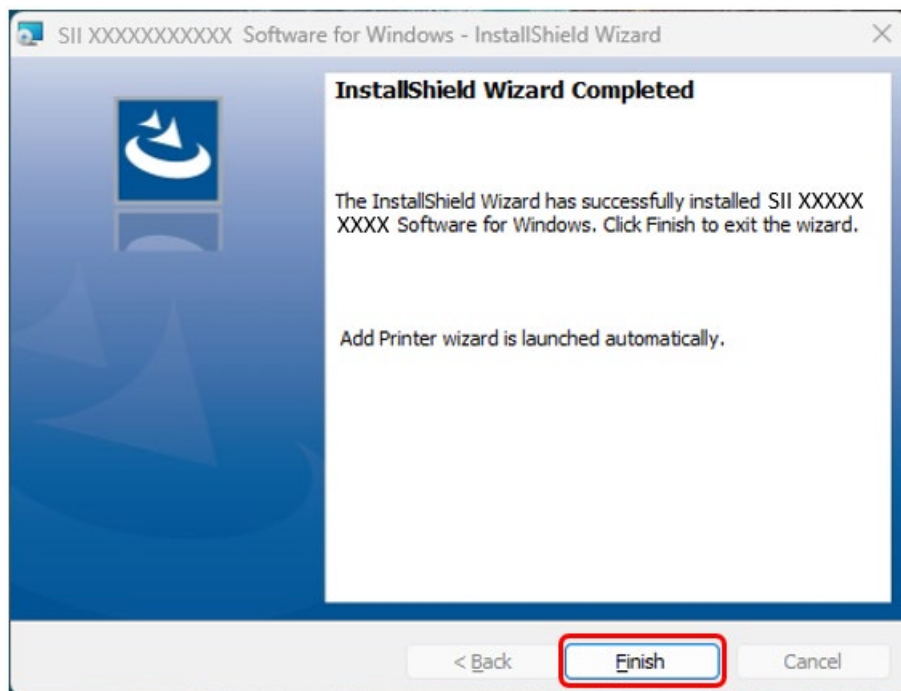


Figure 2-13 [Completion] Window (TCP/IP Connection)

6. When the [Add printer] window is displayed, select the model and the interface, and click the [Next] button.

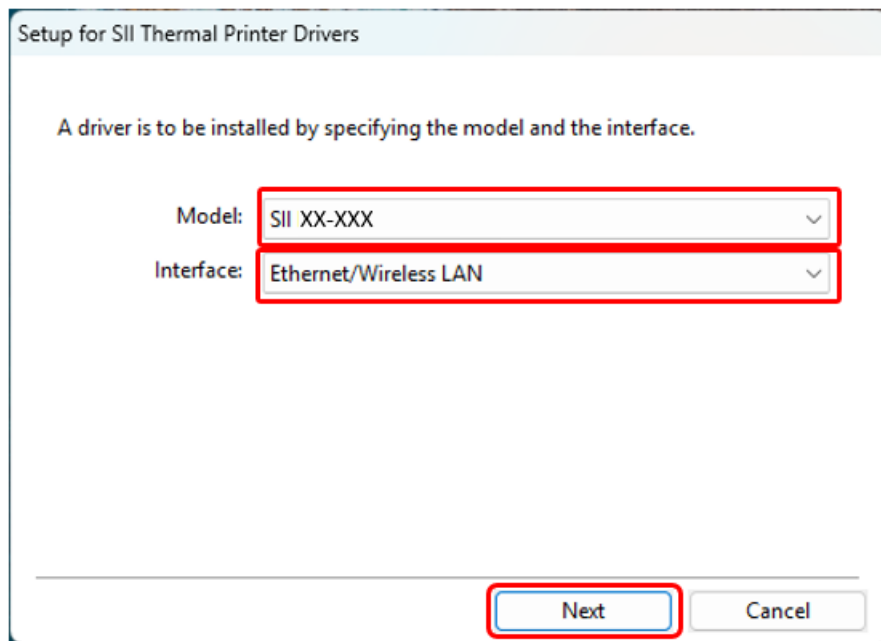


Figure 2-14 [Add printer] Window (TCP/IP Connection)

7. When the printers are displayed on the [Install printer] window, select either of the following and click the [Install] button. The printer driver is installed.
 - 7-1. Select the appropriate printer.
 - 7-2. Select the [Enter manually] and enter the IP address and the Port name.

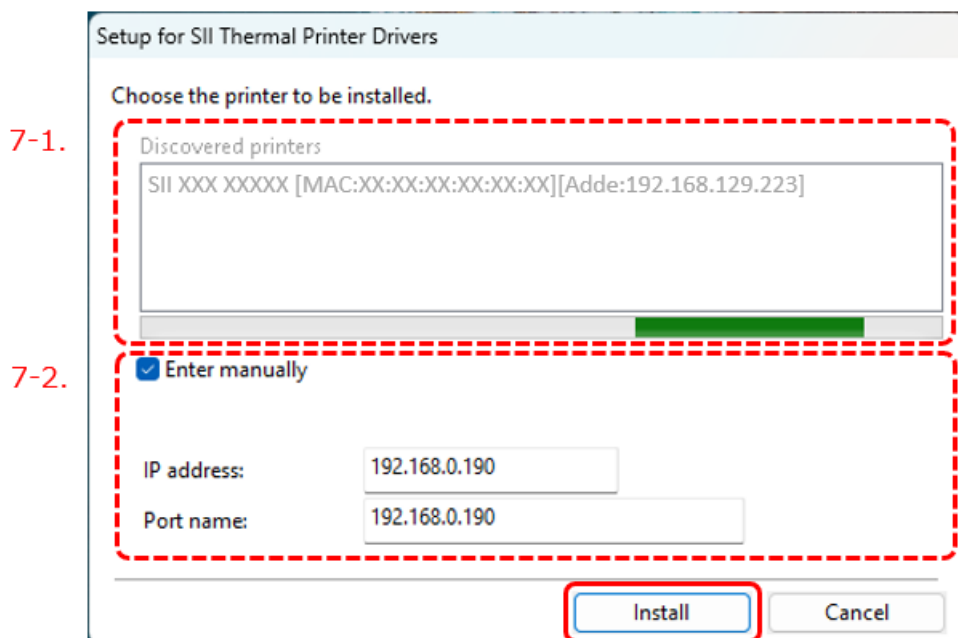


Figure 2-15 [Install printer] Window (TCP/IP Connection)

8. Automatically creates configuration information for OPOS and POS for .NET drivers using the selected model and interface information.
When referring to or changing the setting values, see the following manuals.
 - OPOS: SII OPOS Application Programmer's Guide
 - POS for .NET: SII POS for .NET Service Object Application Programmer's Guide

2.1.6 Installation of Shared Printer

This section describes the installation procedure of the shared printer.

5. When the [Completion] window is displayed, and click the [Finish] button.

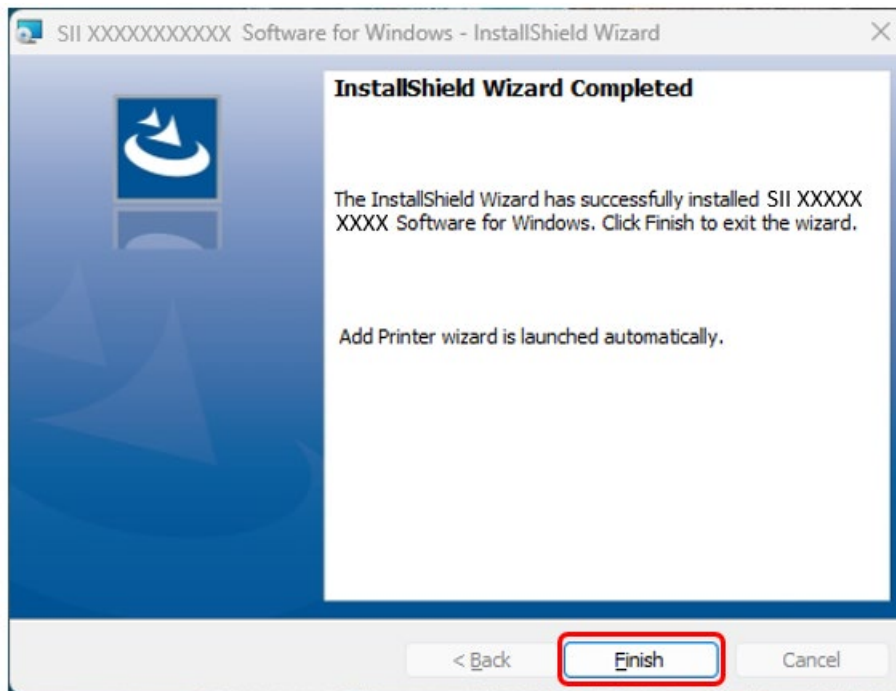


Figure 2-16 [Completion] Window (Shared Printer)

6. When the [Add printer] window is displayed, select the model and the interface, and click the [Next] button.

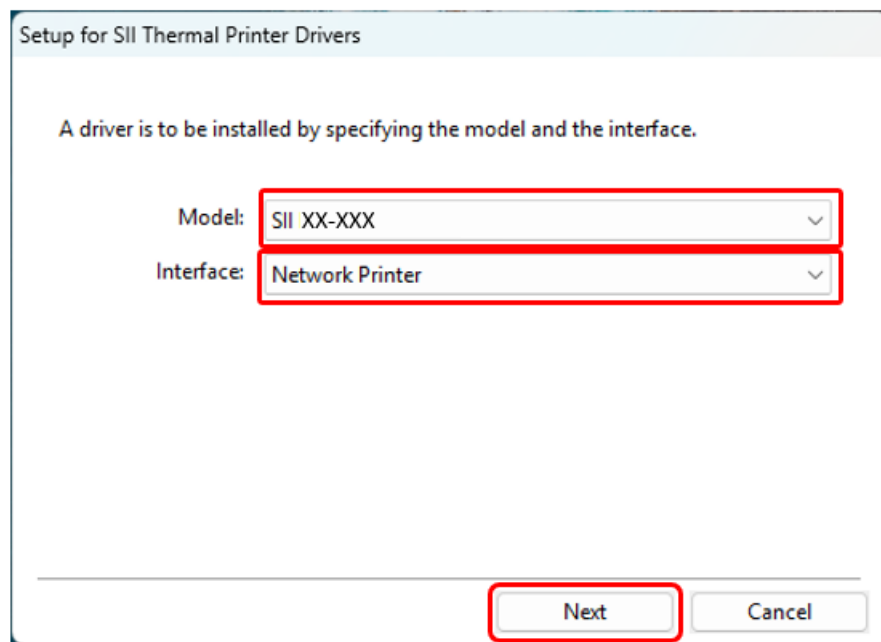


Figure 2-17 [Add printer] Window (Shared Printer)

7. When the printers are displayed on the [Install printer] window, select either of the following and click the [Install] button. The printer driver is installed.
 - 7-1. Select the appropriate printer.
 - 7-2. Select the [Enter manually] and enter the Printer name.

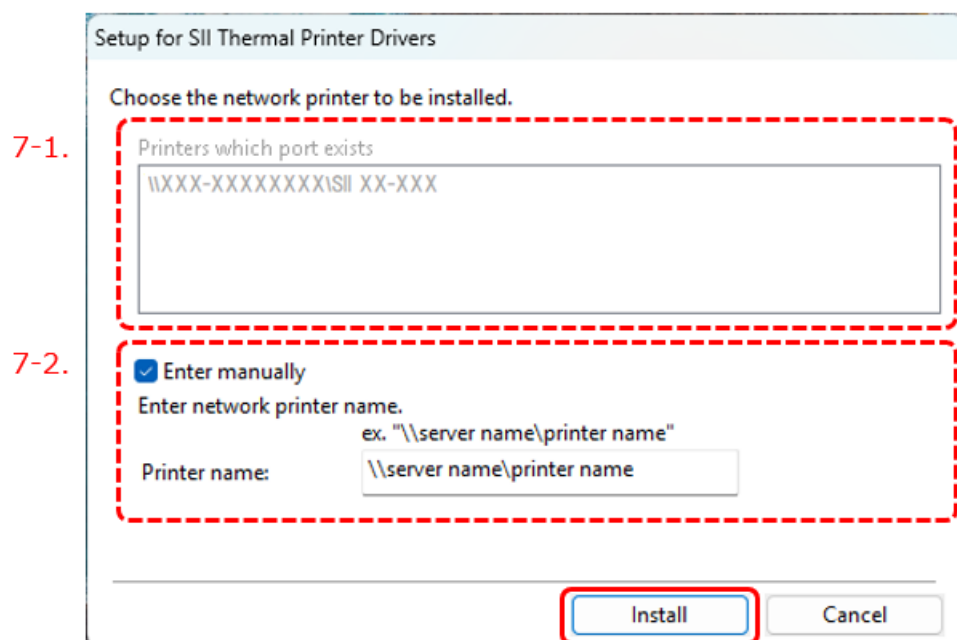


Figure 2-18 [Install printer] Window (Shared Printer)

2.2 Silent Installation

This section describes silent installation.

Caution

- ◆ Do not input space after the /v (slash v) of the argument.

Reference

- The GUI of the installer is not displayed at the installation in silent mode but the dialog to confirm the account control of Windows is displayed.
- The commands are case-sensitive.

2.2.1 Silent Installation

The command to be used for the installation in silent mode is the following.

For 32 bits OS : `setup.exe /s /v"/qn"`
For 64 bits OS : `setup64.exe /s /v"/qn"`

Next, see "2.2.2 Device Setup" to set up the device after silent installation.

2.2.2 Device Setup

The device setup procedures after silent installation are described.

• For USB

Connect the printer. Start a command prompt in administrator mode and execute the following commands of add printer driver.

• For WLAN

Create a TCP/IP port. Start a command prompt in administrator mode and execute the following commands of add printer driver.

• For Bluetooth

Pair the device. Start a command prompt in administrator mode and execute the following commands of add printer driver.

• For Serial

Connect the printer. Start a command prompt in administrator mode and execute the following commands of add printer driver.

The commands of the add printer driver are shown below.

For 32 bits OS : C:\Program Files\SII\PrinterDriver\SPSWA_CA3_32.exe /m "SII xx-xxx" /p "port name"

For 64 bits OS : C:\Program Files(x86)\SII\PrinterDriver\SPSWA_CA3_64.exe /m "SII xx-xxx" /p "port name"

When using settings other than the default, create a file in the following format saved separately set contents, and import the file.

Reference

- Enter the used driver name to "SII XX-XXX" in the command.

OPOS: Reg file

Caution

- ◆ The Reg file and the driver name and port name of the import destination should be matched as shown below.

When the value name is "Interface" and the value is "Driver", match the value of the value name "DriverName" with the "driver name".

When the value name is other than "Interface" and the value is other than "Driver", match the value of "PortName" with the "port name".

For details of the registry, see the chapter of "About the Registry Used by the Software" in the OPOS manual.

POS for. NET: Xml file

Caution

- ◆ The Xml file and the driver name and port name of the import destination should be matched as shown below.

When the attribute: value = "Driver" of the attribute: name = "Interface", match the "attribute value" of the attribute: value of the attribute: name = "DriverName" with the "driver name".

When the attribute: value = "other than Driver" of the attribute: name = "Interface", match the "attribute value" of the attribute: value of the attribute: name = "PortName" with the "port name".

Chapter 3 Uninstallation

This chapter describes the uninstallation method.

3.1 Uninstallation

When the printer driver is no longer needed, uninstall it in the following procedure.

1. Click "Uninstall a Program" from [Programs and Features] in the Control Panel.
2. When [Programs and Features] window is displayed, select the installed installer, and click the [Uninstall] button. Uninstallation is executed.

The installer is displayed with the following name:

- Smart Label Printer Software for Windows
- SII Mobile Printer Software for Windows
- SII POS Printer Software for Windows
- SII Printer Mechanism Software for Windows

3.2 Silent Uninstallation

The procedure of the uninstallation in silent mode is described below.

Execution file	Description
MsiExec.exe	This file is executable in spite of the versions of setup program (Setup(x64).exe) and installed software. See "3.2.1 MsiExec.exe File" for details.
Setup(x64).exe	This file is executable when the versions of your setup program (Setup(x64).exe) and installed software are the same. See "3.2.2 Setup(x64).exe File" for details.

3.2.1 MsiExec.exe File

Startup the command prompt in administrator mode and execute the following command.

- (1) SLP800 Series Printer
MsiExec.exe /qn /x {04D9C552-B547-4006-BD2F-B524FA49B73A}
- (2) Mobile Printer
MsiExec.exe /qn /x {C8F744A5-A2FD-4020-8353-A6102F2918C1}
- (3) POS Printer
MsiExec.exe /qn /x {9469DF87-6E76-4B43-94F3-E923F8C2A6B5}
- (4) Printer Mechanism
MsiExec.exe /qn /x {FAE2CB05-BAD2-4656-AA42-EB49293FF9CB}

Caution

- ◆ Uninstallation is not executed if the uninstallation is not executed by the command prompt in administrator mode.

3.2.2 Setup(x64).exe File

Startup the command prompt in administrator mode and execute the following command.

For 32 bits OS : setup.exe /s /v"/qn"
For 64 bits OS : setup64.exe /s /v"/qn"

Caution

- ◆ Do not input space after the /v (slash v) of the argument.

Reference

- When the file is not executed by the command prompt in administrator mode, the dialog to confirm the account control of Windows is displayed.
- The uninstallation using the MsiExec.exe file can be tried when the uninstallation is unable.