



## SII Log Setting Utility for Windows User's Guide

Rev.02

### [Products]

SLP800 Series

MP-B21L Series

MP-B30L Series

MP-B30 Series

MP-B20 Series

MP-A40 Series

RP-F10 Series

RP-G10 Series

RP-E10 Series

CAP06 Series

Seiko Instruments Inc.

Rev.01 November 2024


Rev.02 December 2025

Copyright©2024-2025 by Seiko Instruments Inc. All rights reserved.

Microsoft® and Windows® are registered trademarks of Microsoft Corporation in the U.S., Japan, and other countries.

Seiko Instruments Inc. (hereinafter referred to as "SII") has prepared this manual for use by SII personnel, licensees, and customers. The information contained herein is the property of SII and shall not be reproduced in whole or in part without the prior written approval of SII.

SII reserves the right to make changes without notice to the specifications and materials contained herein and shall not be responsible for any damages (including consequential) caused by reliance on the materials presented, including but not limited to typographical, arithmetic, or listing errors.

**SII**  is a trademark of Seiko Instruments Inc.

---

# Introduction

---

This manual describes "SII Log Setting Utility for Windows" (hereinafter referred to as the "software") provided by Seiko Instruments Inc. (hereinafter referred to as "SII").

## Notation in This Manual

---

The notation in this manual is described.

### Operation and Display

In principle, this manual is written on the basis of the following conditions:

- Screenshots and display layouts of Windows 11
- Operating instructions with a mouse and a keyboard

### Terms

The terms used in this manual are defined as below.

Term	Description
Printer driver	SII Printer Driver for Windows
Printer folder	Folder displayed by the following operations: [Devices and Printers] folder displayed by selecting [Control Panel] => [Hardware and Sound] => [Devices and Printers]

---

<b>Chapter 1</b>	<b>Overview</b>	<b>1-1</b>
------------------	-----------------	------------

---

1.1	Target Products _____	1-1
-----	-----------------------	-----

---

<b>Chapter 2</b>	<b>Installation</b>	<b>2-1</b>
------------------	---------------------	------------

---

---

<b>Chapter 3</b>	<b>Method of Operation</b>	<b>3-1</b>
------------------	----------------------------	------------

---

3.1	Screen Layout _____	3-1
3.1.1	Log Setting Screen .....	3-2
3.1.2	Setting Button.....	3-3
3.2	Function _____	3-4
3.2.1	How to Set Log Output.....	3-4
3.3	Log File Format _____	3-5

---

# Chapter 1 Overview

---

This chapter describes the overview of this software.

This software is for setting log output of the target products.

## 1.1 Target Products

---

The products covered by this software are as follows.

Printer	Software
SLP800 series MP-B21L series MP-B30L series MP-B30 series MP-B20 series MP-A40 series RP-F10 series RP-F10 series RP-E10 series CAP06 series	<ul style="list-style-type: none"><li>• SII Printer Driver for Windows</li><li>• SII SDK for Windows</li><li>• SII Printer Setting Utility for Windows</li></ul>

---

# Chapter 2 Installation

---

For the installation, see "SII Software Package for Windows Installation Guide".

# Chapter 3 Method of Operation

This chapter describes the setting screen of the software.

## 3.1 Screen Layout

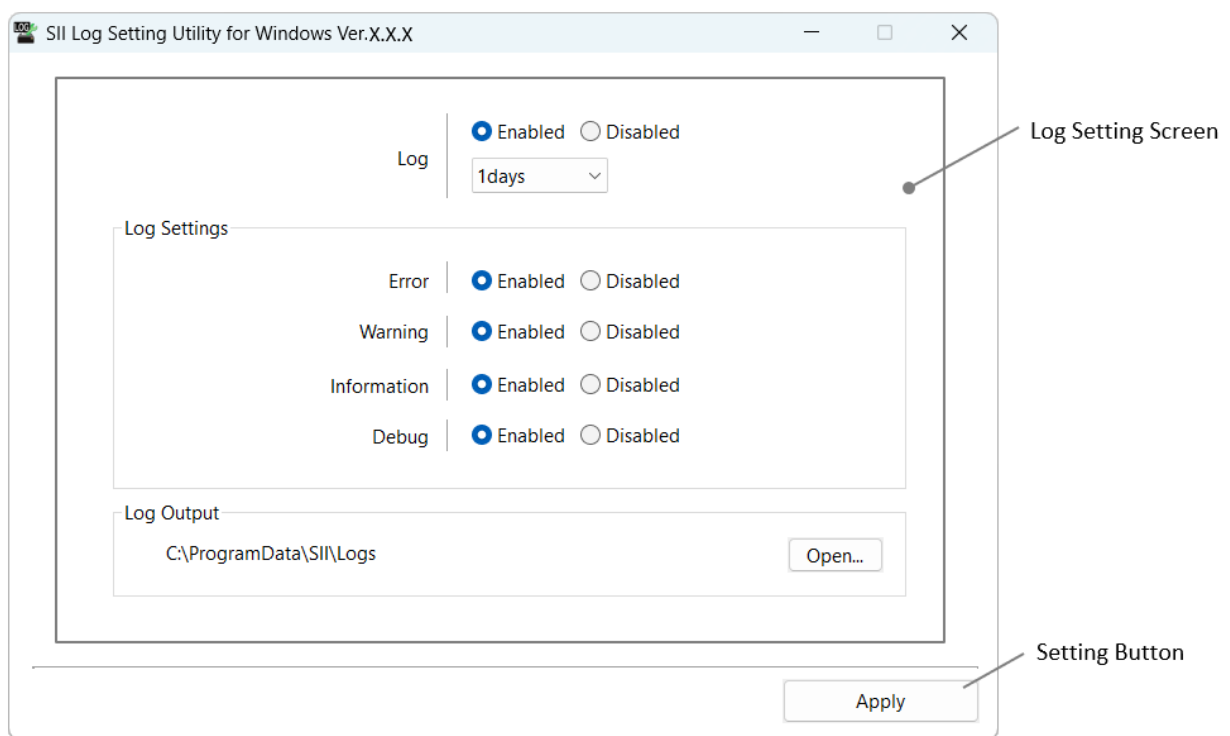


Figure 3-1 [Log] Screen

### 3.1.1 Log Setting Screen

Name	Description ("": Default)
Log	<p>Enables or disables the log output.</p> <ul style="list-style-type: none"> <li>• Enabled</li> <li>• Disabled</li> </ul> <p>When "Enabled" is selected, select the retention period.</p> <ul style="list-style-type: none"> <li>• 1 day</li> <li>• 3 days</li> <li>• 10 days</li> <li>• 30 days</li> <li>• 90 days</li> </ul> <p>The output log is cleared when the retention period elapses regardless of whether log output is enabled or disabled at the time.</p> <p>The actual retention period may be longer by 1 day at maximum.</p> <p>However, the output log is not cleared while the software described in "1.1 Target Products" does not operate.</p> <p>The maximum size of a log file is about 32 MB. When it exceeds the maximum size, a new log file is created and stored up to the retention period.</p>
Log Settings*1	Sets the level of the log output.
Error	<p>Used to select whether to output logs that are in error level.</p> <p>When "Enabled" is selected, the log is output if an error that processing cannot be continued is detected.</p> <ul style="list-style-type: none"> <li>• Enabled</li> <li>• Disabled</li> </ul>
Warning	<p>Used to select whether to output logs that are in warning level.</p> <p>When "Enabled" is selected, the log is output if an error within a range that processing can be continued is detected.</p> <ul style="list-style-type: none"> <li>• Enabled</li> <li>• Disabled</li> </ul>
Information	<p>Used to select whether to output logs that are in information level.</p> <p>When "Enabled" is selected, information such as history of basic operation is output by log.</p> <ul style="list-style-type: none"> <li>• Enabled</li> <li>• Disabled</li> </ul>
Debug	<p>Used to select whether to output more detailed debug information than information level by log.</p> <p>When "Enabled" is selected, history of more detailed operation than Information is output by log as a dump log.</p> <ul style="list-style-type: none"> <li>• Enabled</li> <li>• Disabled</li> </ul> <p>The maximum size of a dump log is 256 bytes. When it exceeds the maximum size, the subsequent dump log will not be output.</p>



Name	Description ("": Default)
Log Output	Displays the log output destination. The log output destination and the file name are as follows: Output destination: <System Drive>:\ProgramData\SI\Logs\<Category Name> File name: <yyyyMMdd>.log However, when the log file exceeds the maximum size, the file name is changed to <yyyyMMdd_hhmmssfff>.log, and a new <yyyyMMdd>.log is created.*2
Open...	Opens the route folder in which log files of each category are stored. The output destination cannot be changed.

\*1: Not available when [Log] is "Disabled".

\*2: The meanings of the symbols used for the file name are as follows. Each value comes from System Clock of Windows.

yyyy : Year  
MM : Month  
dd : Day  
hh : Hour  
mm : Minute  
ss : Second  
fff : Millisecond

### 3.1.2 Setting Button

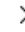
Name	Description
Apply	Determines the log output contents and starts the log output.

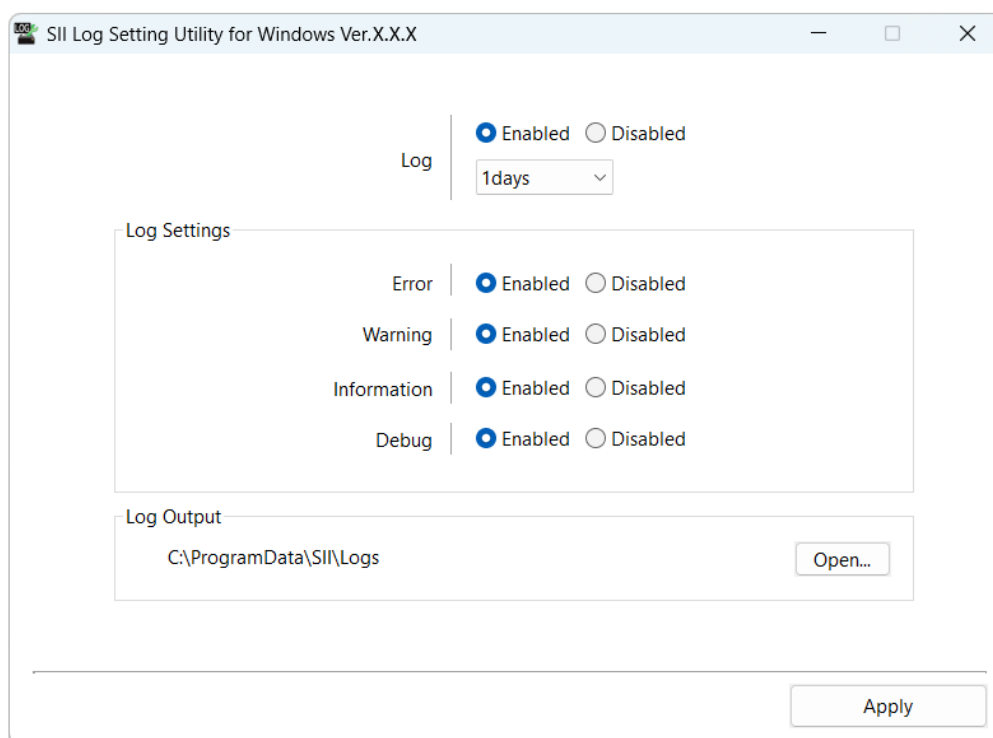
## 3.2 Function

The function of the software is described.

### 3.2.1 How to Set Log Output

This section describes how to set log output.

1. Start the software to display the following screen.
2. Select "Enabled" in [Log] and select the retention period.
3. Select each item of [Log Settings].
4. Click the [Apply] button.
5. Click the  [Close] button on the title bar to exit the software.



### Caution

- ◆ [Apply] of the log output requires logon to the computer with administrator privileges.
- ◆ Avoid unnecessary log output since the operation of the printer driver and the SDK may be heavy when the log output is enabled.
- ◆ Log output may not be possible when the log file is kept open.

## 3.3 Log File Format

---

This section describes the log file format.

Logs are recorded in a log file for each line, and the file format has the following meanings.

[MM/dd hh:mm(ss.fff)]    [Process info]    [Lv]    [Module]    Message

Name	Description
Log output time [MM/dd hh:mm(ss.fff)]	The log output time is recorded. The meanings of the symbols are as follows: MM : Month dd : Day hh : Hour mm : Minute ss : Second fff : Millisecond
Process information [Process info]	The process information is recorded.
Log level [Lv]	The log level is recorded. The meanings of the symbols are as follows: E : Error W : Warning I : Information D : Debug
Module identification name [Module]	The module identification name is recorded.
Message	A message is recorded.