



SII Communication Setting Utility for Windows User's Guide

Rev.01

[Products]

SLP800 Series

Seiko Instruments Inc.


Copyright©2025 by Seiko Instruments Inc. All rights reserved.

Microsoft® and Windows® are registered trademarks of Microsoft Corporation in the U.S., Japan, and other countries.

Bluetooth® is a registered trademark of Bluetooth SIG, Inc.

Seiko Instruments Inc. (hereinafter referred to as "SII") has prepared this manual for use by SII personnel, licensees, and customers. The information contained herein is the property of SII and shall not be reproduced in whole or in part without the prior written approval of SII.

SII reserves the right to make changes without notice to the specifications and materials contained herein and shall not be responsible for any damages (including consequential) caused by reliance on the materials presented, including but not limited to typographical, arithmetic, or listing errors.

SII  is a trademark of Seiko Instruments Inc.

Introduction

This manual describes "SII Communications Setting Utility for Windows" (hereinafter referred to as the "software") provided by Seiko Instruments Inc. (hereinafter referred to as "SII").

Notation in This Manual

The notation in this manual is described.

Operation and Display

In principle, this manual is written on the basis of the following conditions:

- Screenshots and display layouts of Windows 11
- Operating instructions with a mouse and a keyboard

Terms

The terms used in this manual are defined as below.

Term	Description
Printer	SII printer
Printer driver	"SII Printer Driver for Windows" for SLP800 series
Printer command	Instruction to control the printer, described in "SLP850 SERIES THERMAL PRINTER TECHNICAL REFERENCE"

Chapter 1	Overview	1-1
1.1	Target Products _____	1-1
Chapter 2	Installation	2-1
Chapter 3	Communication Settings	3-1
3.1	Screen Layout _____	3-1
3.1.1	Port List	3-1
3.1.2	Setting Buttons.....	3-2
3.1.3	Setting Screen for Each Connection Method	3-2
3.2	Function _____	3-5
3.2.1	Confirm Current Communication Settings	3-5
3.2.2	Change Communication Settings.....	3-6
3.2.3	Restore Communication Settings to Default Settings	3-7

Chapter 1 Overview

This chapter describes the overview of this software.

This software is for changing the communication settings of the printer.
The following communication settings can be changed with this software:

- Bluetooth communication settings
- Serial communication settings

1.1 Target Products

The products covered by this software are as follows.

Printer	Printer Driver
SLP800 series	SII Printer Driver for Windows

Chapter 2 Installation

For the installation, see "SII Software Package for Windows Installation Guide".

Chapter 3 Communication Settings

This chapter describes the setting screen of the software.

3.1 Screen Layout

The screen layout of the software is described.

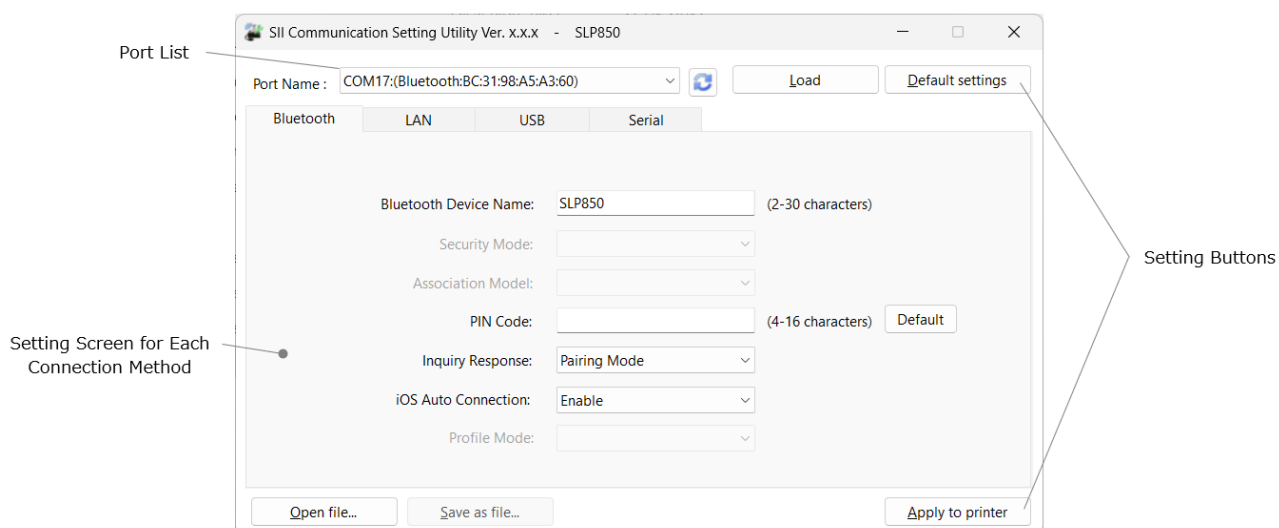



Figure 3-1 Whole view

3.1.1 Port List

The port list shown in Figure 3-1 is described below.

Name	Description
Port Name	Displays available port name and port information.
 Refresh	Updates the list of [Port Name]. Update the list with this button, for example, when connected the printer after starting this software.

3.1.2 Setting Buttons

The setting buttons shown in Figure 3-1 are described below.

Name	Description
Load	Loads and displays the setting information of the printer connected to the port selected in [Port Name].
Default settings	Loads the default settings from the printer and displays them. The settings currently displayed will be overwritten with the default settings.
Open file...	Loads and displays the saved file (*.scs, *.scsw).
Apply to printer	Writes the contents displayed in the setting screen for each connection method to the printer.

3.1.3 Setting Screen for Each Connection Method

Communication setting of each connection method can be performed. See "SLP850 SERIES THERMAL PRINTER TECHNICAL REFERENCE" for details of the setting items.

Caution

- ◆ Only the setting content of the tab of the connection method that the printer supports is displayed.

Bluetooth communication settings

Figure 3-2 [Bluetooth] Tab Screen

Name	Description
Bluetooth Device Name	Used to enter the Bluetooth device name.*1 2 to 30 characters can be entered. If the text box is blank, it is ignored.

Name	Description
PIN Code	Used to enter PIN Code.*1 4 to 16 characters can be entered. If the text box is blank, it is ignored. PIN code is not loaded even when the [Load] button is clicked.
Default	'0000' is input in [PIN Code].
Inquiry Response	Selects for Inquiry Response. Pairing Mode: The printer responds to the search from the Bluetooth host only during pairing mode. To enable the printer to be in pairing mode, turn off the printer power and then press the power switch for 5 seconds or more. When the POWER LED is blinked, the printer enters pairing mode for about 60 seconds. Always: The printer always responds to the search from the Bluetooth host.
iOS Auto Connection	Selects for iOS Auto Connection. Disable: iOS Auto Connection is disabled. Enable: When the connection with the iOS device is disconnected, the printer attempts to reconnect to the iOS device that was last connected.

*1: The characters available for setting are as follows:

'0' to '9', 'a' to 'z', 'A' to 'Z', '+', '-', '_', '#', '*', and ' ' (space: 20H)

Caution

- ◆ Bluetooth connection is not supported by Windows Server 2025, 2022, 2019, or 2016.

Serial communication settings

Bluetooth LAN USB Serial

Baud Rate: 115200 bps

Parity:

Busy Conditions:

Flow Control:

Printer Busy:

Host Busy:

Break:

Busy Threshold:

Figure 3-3 [Serial] Tab Screen

Name	Description
Baud Rate	Selects for the communication speed. Apply DIP switch setting 115200 bps 57600 bps 38400 bps 19200 bps 9600 bps

3.2 Function

The function of the software is described.

3.2.1 Confirm Current Communication Settings

The procedure for confirming the current communication settings of the printer is described below.

1. Make sure that the connected printer can communicate.
2. Start the software.
When there is only one port that the host recognizes, the communication settings of the printer connected to the port are loaded automatically at the software startup. Proceed to step 4.
3. When there are multiple ports that the host recognizes, select the port to which the printer is connected from [Port Name], and click the [Load] button.

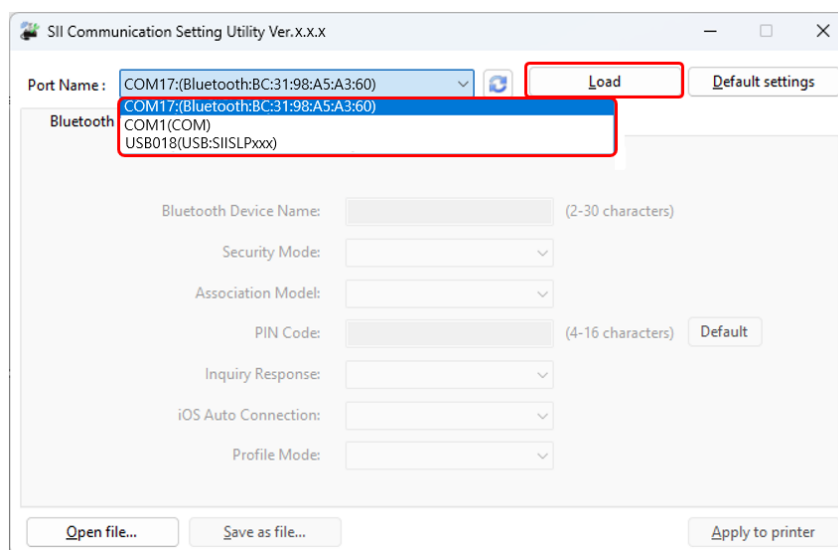


Figure 3-4 Port Selection

4. The communication settings are loaded, and the setting screen switches to the tab of the current connection method.

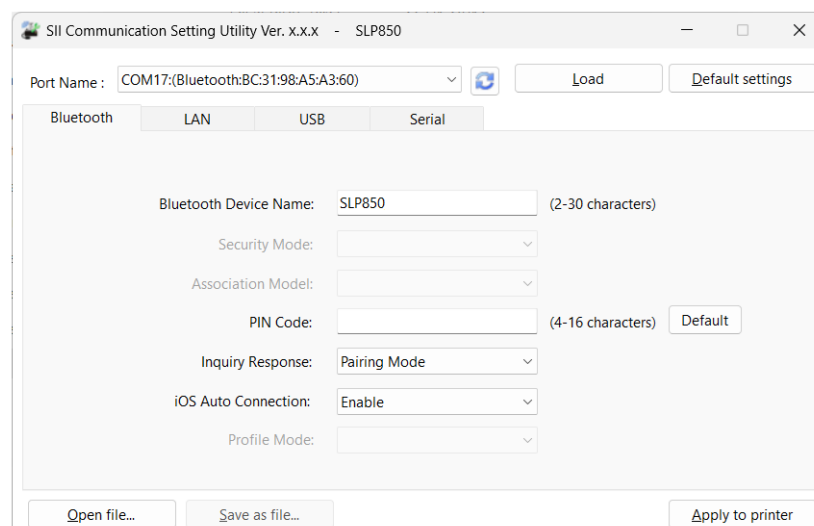



Figure 3-5 Communication Setting Display

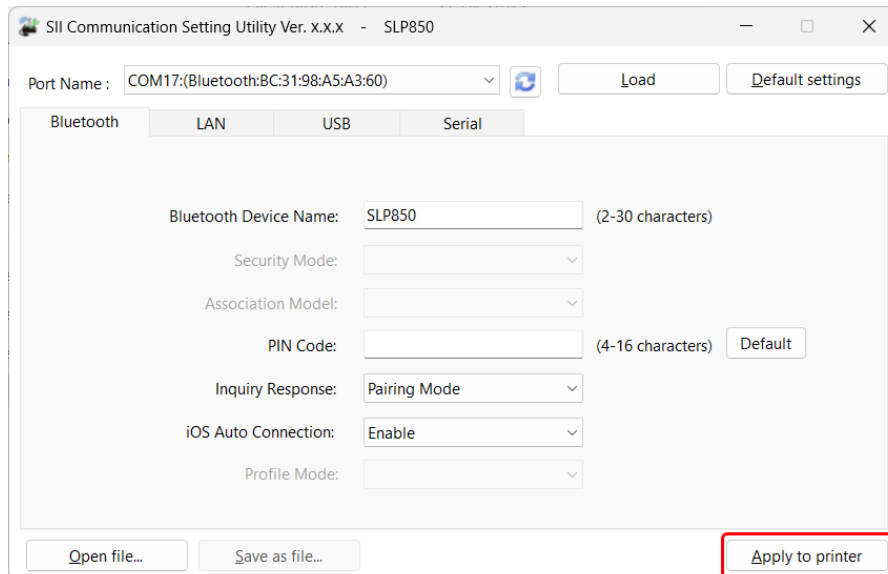
Caution

- ◆ To confirm the communication settings of the newly connected printer after starting the software, click the [ Refresh] button to update [Port Name].
- ◆ Even when the [Load] button is clicked, the Bluetooth PIN code is not loaded.


3.2.2 Change Communication Settings

The procedure for changing the communication settings of the printer is described below.

1. Follow the steps of "3.2.1 Confirm Current Communication Settings" to display the current communication settings of the printer.
2. Change the contents of the communication settings, and then click the [Apply to printer] button. The communication settings are written to the printer.



SII Communication Setting Utility Ver. x.x.x - SLP850

Port Name : COM17:(Bluetooth:BC:31:98:A5:A3:60)  Load Default settings

Bluetooth LAN USB Serial

Bluetooth Device Name: SLP850 (2-30 characters)

Security Mode:

Association Model:

PIN Code: (4-16 characters) Default

Inquiry Response: Pairing Mode

iOS Auto Connection: Enable

Profile Mode:

Open file... Save as file... Apply to printer

Figure 3-6 Change Communication Settings

Caution

- ◆ When iSerialNumber is changed in the state that the connection method with the printer is USB communication, the assignment of the port to which the printer is connected may be changed.

Reference

- ◆ The setting will not be changed if the input item in the screen is blank.
- ◆ When the communication settings are written to the printer, the printer is reset to enable the settings.

3.2.3 Restore Communication Settings to Default Settings

The procedure for restoring the communication settings of the printer to the default settings is described below.

1. Make sure that the connected printer can communicate.
2. Click the [Default settings] button to load the default settings from the printer and display them on the screen.

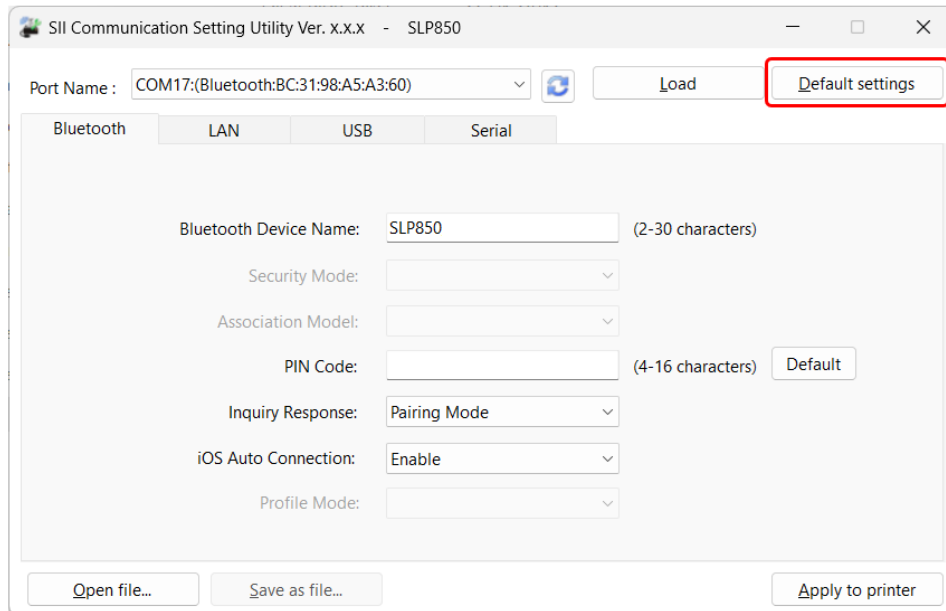


Figure 3-7 Default Settings

3. Click the [Apply to printer] button to write the communication settings to the printer.

Reference

- ◆ When the communication settings are written to the printer, the printer is reset to enable the settings.