



SII Printer Driver for Windows User's Guide

Rev.01

[Products]

SLP800 Series

Seiko Instruments Inc.


Copyright©2025 by Seiko Instruments Inc. All rights reserved.

Microsoft® and Windows® are registered trademarks Microsoft Corporation in the U.S., Japan, and other countries.

Bluetooth® is a registered trademark of Bluetooth SIG, Inc.

Seiko Instruments Inc. (hereinafter referred to as "SII") has prepared this manual for use by SII personnel, licensees, and customers. The information contained herein is the property of SII and shall not be reproduced in whole or in part without the prior written approval of SII.

SII reserves the right to make changes without notice to the specifications and materials contained herein and shall not be responsible for any damages (including consequential) caused by reliance on the materials presented, including but not limited to typographical, arithmetic, or listing errors.

SII  is a trademark of Seiko Instruments Inc.

Introduction

This manual describes "SII Printer Driver for Windows" (hereinafter referred to as "printer driver") provided by Seiko Instruments Inc. (hereinafter referred to as "SII").

Notation in This Manual

The notation in this manual is described.

Operation and Display

In principle, this manual is written on the basis of the following conditions:

- Screenshots and display layouts of Windows 11.
- Operating instructions with a mouse and a keyboard

Terms

This section describes terms used in this manual.

Term	Description
Printer name	Friendly name which is displayed in the Printer Folder and can be changed by users
Driver name	Unique model name for identifying the printer driver
Smart Label Printer Software Development Kit (SDK)	Dynamic link library (DLL) for application development provided with the printer driver, designed to directly communicate with a printer to control it
Printer Folder	Folder displayed by the following operations: [Devices and Printers] folder by selecting [Control Panel] => [Hardware and Sound] => [Devices and Printer]
Print Server Properties	Properties displayed by the following operations: [Print Server Properties] folder displayed by clicking any printer icon in the [Printer Folder] and selecting [Print Server Properties] displayed on the toolbar at the top of the [Printer Folder]

Term	Description
Memory switch	Feature for [Function Settings] described in "SLP850 SERIES Thermal Printer USER'S GUIDE"
Dot	A unit that configures the print Prints with dot density of 11.8 dots per 1 mm

Chapter 1	Overview	1-1
1.1	Target Products.....	1-1
1.2	Printer Settings	1-2
1.3	Limitation.....	1-2
Chapter 2	Installation	2-1
Chapter 3	Printing Preferences	3-1
3.1	Layout	3-2
3.1.1	Layout Settings.....	3-2
3.2	Advanced Options	3-4
3.2.1	Advanced Options Settings.....	3-4
Chapter 4	Printer Properties	4-1
4.1	General	4-2
4.2	Sharing.....	4-3
4.3	Ports.....	4-4
4.4	Utility	4-5
Chapter 5	Page Setup	5-1
5.1	Paper Size	5-3
5.2	How to Add User Defined Paper.....	5-3

Chapter 1 Overview

This chapter describes the overview of the printer driver.

1.1 Target Products

The target products and driver name are as follows.

Printer	Default Driver Name
SLP800 Series	Smart Label Printer 850

1.2 Printer Settings

For using the printer driver, set the memory switch of the printer as shown in the following [Value].

The memory switch can be changed by "SII Printer Setting Utility for Windows" for SLP800 series. For details, see "SII Printer Setting Utility for Windows User's Guide" for SLP800 series.

MS	Item	Value
1-1	Mark Mode Selection (Mark Mode)	1: Disable 0: Enable* ¹
1-2 to 3	Thermal Paper Selection (Thermal Paper)	00B: Non-adhesive tag 01B: Linerless label 10B: SLP Label 1* ² 11B: SLP Label 2* ³

*1: When performing marked paper from feed, set to "Enable".
When not performing marked paper from feed, set to "Disable".

*2: This is the default setting. Normally, use this setting.

*3: Set this when you want to make the printing lighter.

Caution

- ◆ When the printer is set to other than above, it may prevent the printer driver from working properly.

1.3 Limitation

The printer driver has the following limitations.

- The printer driver is not guaranteed against abnormal printing including garbled characters in sleep mode or hibernation mode, which is a part of the Windows standard function.
- When the printer is in unconnected status at print suspension or in data unaccepting status, the printer resetting may not be correctly completed and garble character may occur.
- When using serial communication, the status that the printer is unconnected is not notified.

Chapter 2 Installation

For the installation, see "SII Software Package for Windows Installation Guide".

Chapter 3 Printing Preferences

This chapter describes the printing preferences.

The printing preferences can be reviewed and changed from various tabs in the [Printing Preferences] window.

To display the [Printing Preferences] window, follow the steps below.

1. Right-click the printer icon in the [Printer Folder] to display the sub-menu.
2. Click [Printing Preferences] from the sub-menu.

The following tabs are displayed in the [Printing Preferences] window.

- [Layout] tab : Sets the print direction, page order, and page format.

Caution

- ◆ When printing from Windows Store Apps, only a part of configurable items is displayed in [Printing Preferences] window.

Details of the windows are described in subsequent sections.

3.1 Layout

Sets the print direction, page order, and page format.

3.1.1 Layout Settings

Select the [Layout] tab to display the window below.

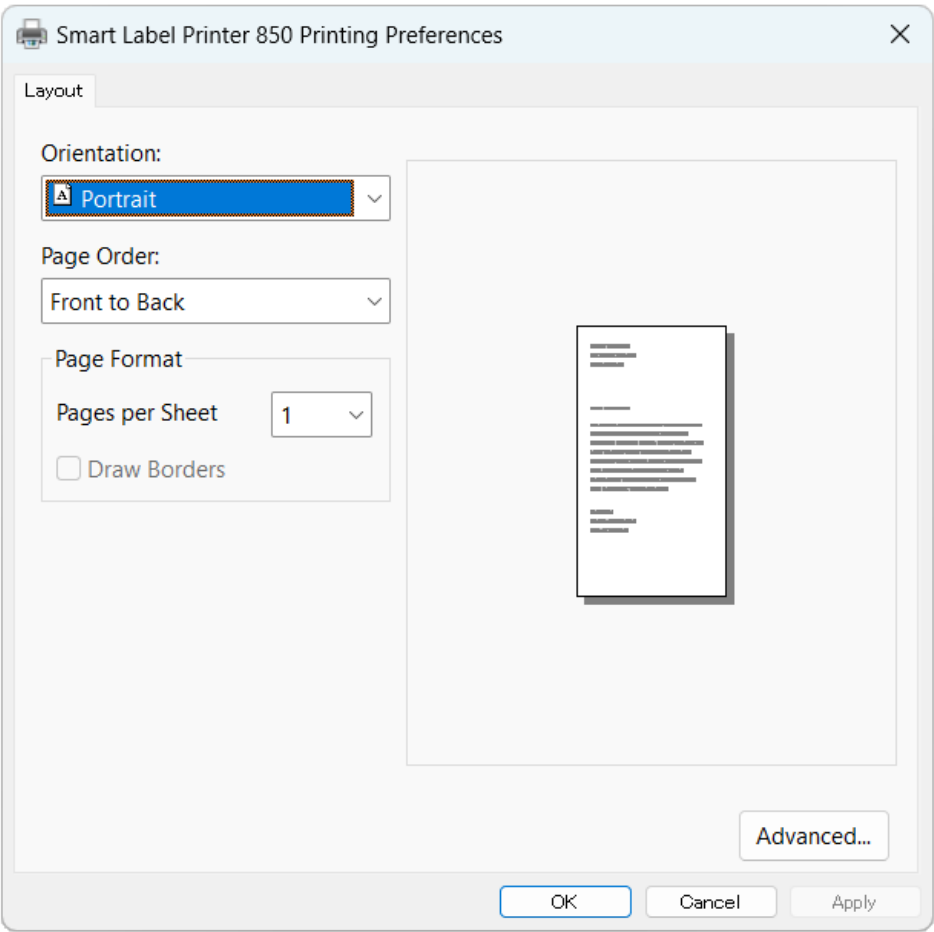


Figure 3-1 [Layout] Window

Item	Description ("": Default)
Orientation	Selects the print direction. <ul style="list-style-type: none">• Portrait• Landscape
Page Order	Selects the order of pages to print. <ul style="list-style-type: none">• Front to Back• Back to Front
Page Format	Sets the number of pages per sheet.
Pages per Sheet	Selects the number of pages to print per sheet. <ul style="list-style-type: none">• 1• 2• 4• 6• 9• 16

Item	Description (" " : Default)
Advanced...	Displays the advanced option dialog. For details, see "3.2 Advanced Options".

3.2 Advanced Options

3.2.1 Advanced Options Settings

Click the [Advanced...] button at the lower right of the [Layout] tab to display the window below.

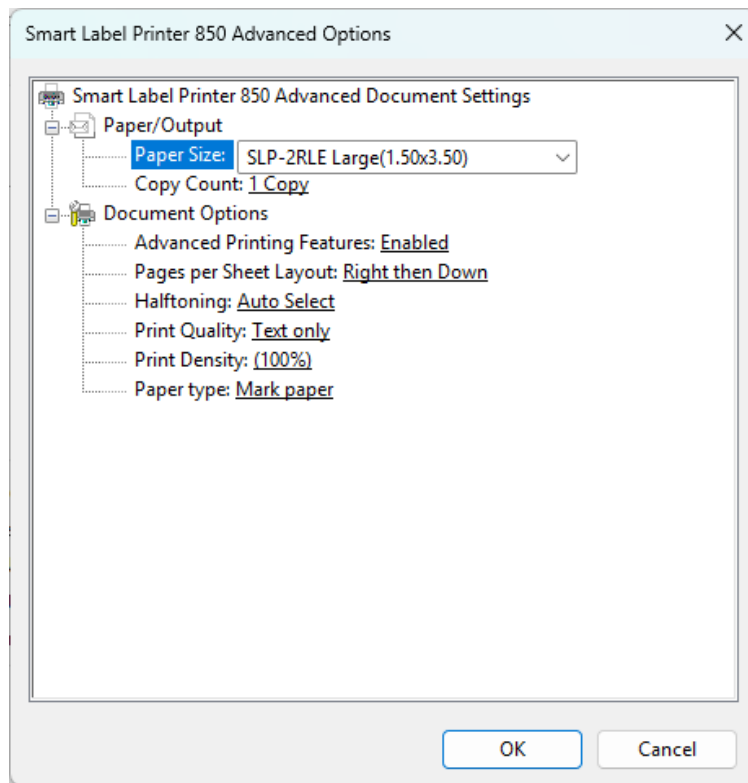


Figure 3-2 [Advanced Options] Window

Item	Description ("": Default)
Paper/Output	Sets the paper size and the number of copies.
Paper Size	Selects for the paper size to use.*1
Copy Count	Enters the number of copies to print (Unit: Copy). • 1 to 9999
Document Options	Sets the document options.
Advanced Printing Features	Selects for the advanced printing features. • Enabled • Disabled
Pages per Sheet Layout	Selects for the page layout in a sheet. • Right then Down • Down then Right • Left then Down • Down then Left

Item		Description ("": Default)
	Halftoning	Selects for the halftoning. <ul style="list-style-type: none"> • Auto Select • Super Cell • Dither 6x6 • Dither 8x8
	Print Quality	Selects for the print quality. <ul style="list-style-type: none"> • Text only • Graphics • Barcode and Graphics
	Print Density	Sets the print density in 5% increments (Unit: %). 70 to 130 (100)
	Paper Type	Selects for the paper type. <ul style="list-style-type: none"> • Mark paper • Non-marked paper

*1: User defined paper can be registered and set. For details of how to register a paper size, see "5.3 How to Add User Defined Paper".

Chapter 4 Printer Properties

This chapter describes the printer properties.

The printer properties can be reviewed and changed from various tabs in the [Printer Properties] window.

To display the [Printer Properties] window, follow the steps below.

1. Right-click the printer icon in the [Printer Folder] to display the sub-menu.
2. Click [Printer Properties] from the sub-menu.

The following tabs are displayed in [Printer Properties] window.

- [General] tab : Performs the general management of the printer driver and prints the test page.
- [Sharing] tab : Sets shared printers.
- [Ports] tab : Sets output ports.
- [Utility] tab : Displays the version information of the printer driver and the start buttons for various utilities.

Caution

- ◆ For the tabs other than the above displayed in the [Printer Properties] window, keep the default settings at installation.

Details of the windows are described in subsequent sections.

4.1 General

Performs the general management of the printer driver and prints the test page.
Select the [General] tab to display the window below.

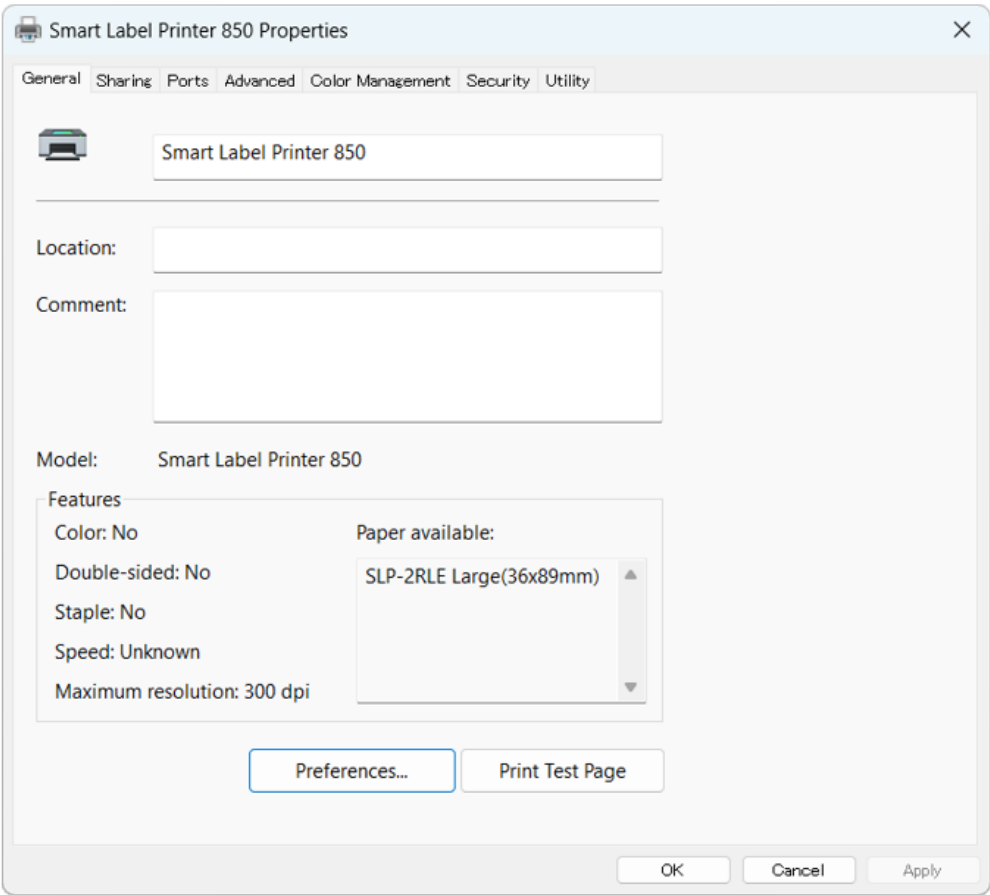


Figure 4-1 [General] Window

Item	Description
Printer name	Used to review or change the printer name.*1
Location	Used to enter the location of the printer.
Comment	Used to enter a comment.
Model	Displays the printer Driver name.
Preferences...	Displays the [Printing Preferences] window.
Print Test Page	Executes the Windows test print.*2

*1: If the printer name is changed, the values set in [Preferences...] may be initialized.

*2: For compact printers, the test printing will not print properly because the printing content is cut off at the printing width, but this is not a malfunction.

4.2 Sharing

Sets shared printers.
Select the [Sharing] tab to display the window below.

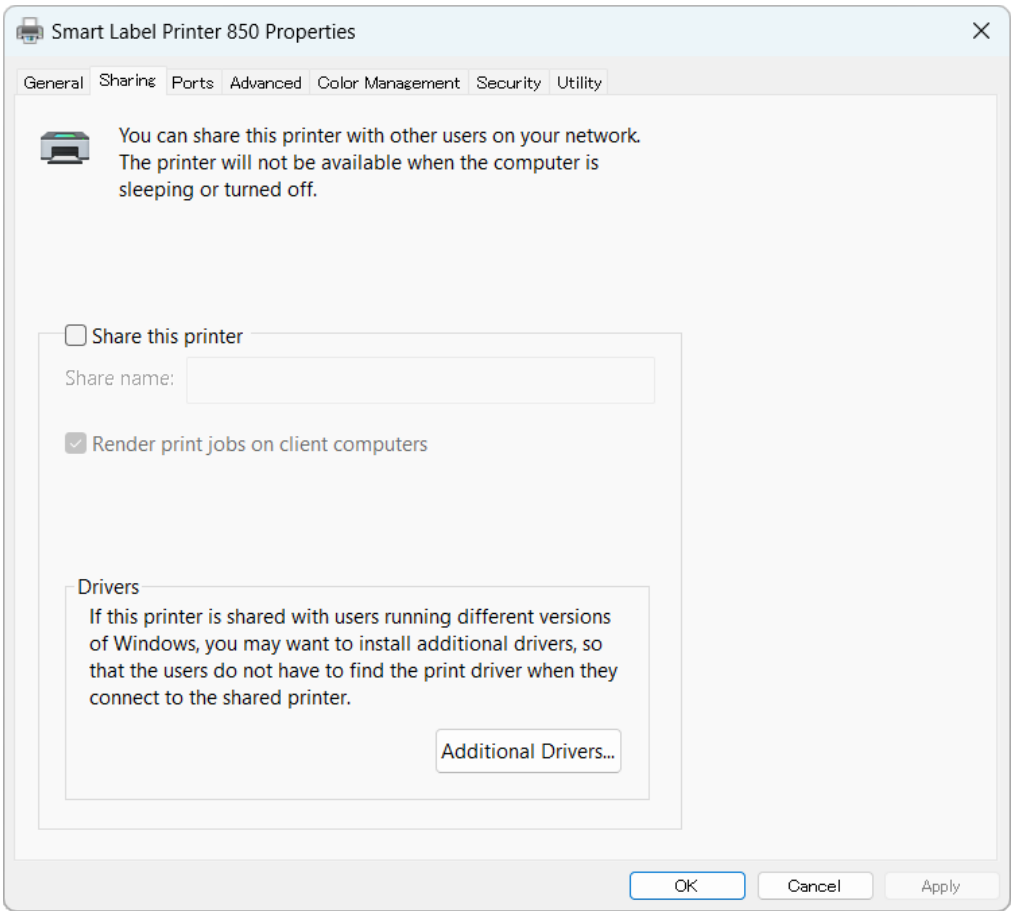


Figure 4-2 [Sharing] Window

Item	Description
Share this printer	Selecting this check box and entering an arbitrary share name in [Share name] enables the printer driver to be used from another computer on the network.
Share name	Used to enter the share name of the printer.
Additional Drivers...	This function is not supported.

Caution

◆ A shared printer may not work properly depending on the network usage situation.

4.3 Ports

Sets output ports.
Select the [Ports] tab to display the window below.

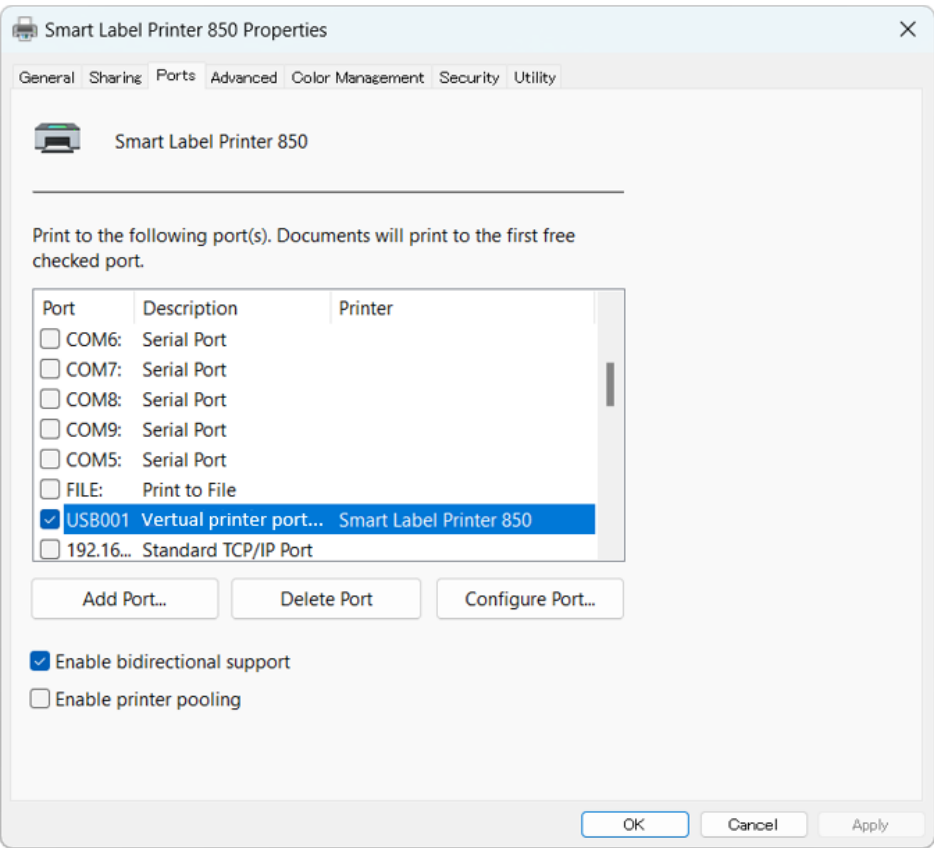


Figure 4-3 [Ports] Window

Item	Description
Add Port...	Adds ports.
Delete Port	Deletes ports.
Configure Port...	Sets parameters about the serial connection. This setting requires logon to the computer with administrator privileges.*1*2*3*4
Enable bidirectional support	Select this check box to get the information from the printer. When using the SDK or utilities, be sure to check this box.
Enable printer pooling	By enabling it, check boxes of multiple ports can be selected so that the same content can be printed on the printer connected to each port. When using the SDK, be sure to clear this check box.

*1: Set the same communication settings as the printer in the [Communication Settings] window displayed by selecting [COMx: Serial Port] and clicking the [Configure Port] button.
*2: When using the SDK, select "Hardware" in [Flow control].
*3: Set "8" in [Data Bit].
*4: For Windows Server 2025, 2022, 2019, or 2016, the communication settings cannot be set with the [Configure Port] button. Set the communication settings from [Ports (COM & LPT)] in the [Device Manager] on the computer.

4.4 Utility

Displays the version information of the printer driver and the start buttons for various utilities.
Select the [Utility] tab to display the window below.

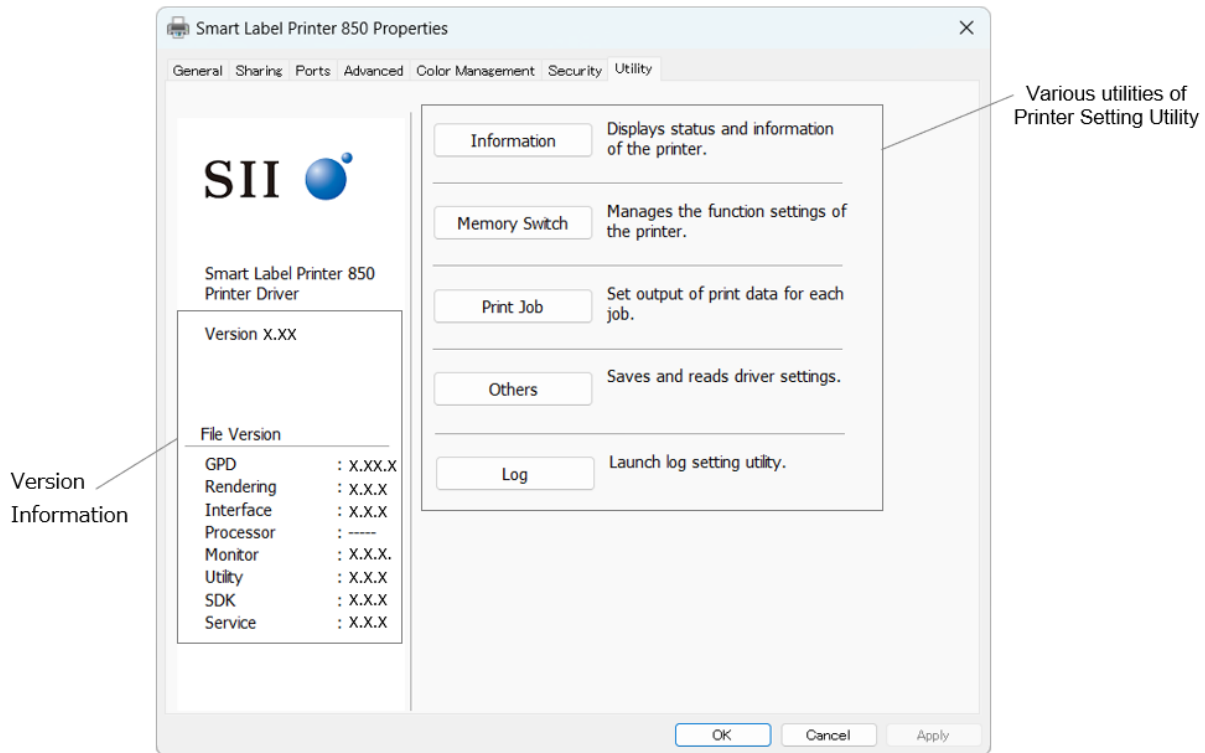


Figure 4-4 [Utility] Window

Item	Description
Version Information	Displays the file information of the printer driver.
Version	Displays the printer driver version.
File version*1	Displays the file version of each program configuring the printer driver.
Various Utilities	Starts the utility by clicking the button.
Information	Displays various information of the printer.
Memory Switch	Sets the memory switches.
Print Job	Sets the print data output per job.
Others	Exports the settings of this software to a file, or imports an exported file.
Log	Starts the Log Setting Utility. See "SII Log Setting Utility for Windows User's Guide".

*1: Processor (print processor) is not used in the printer driver.

The utility setting window is displayed by clicking each utility starting button.

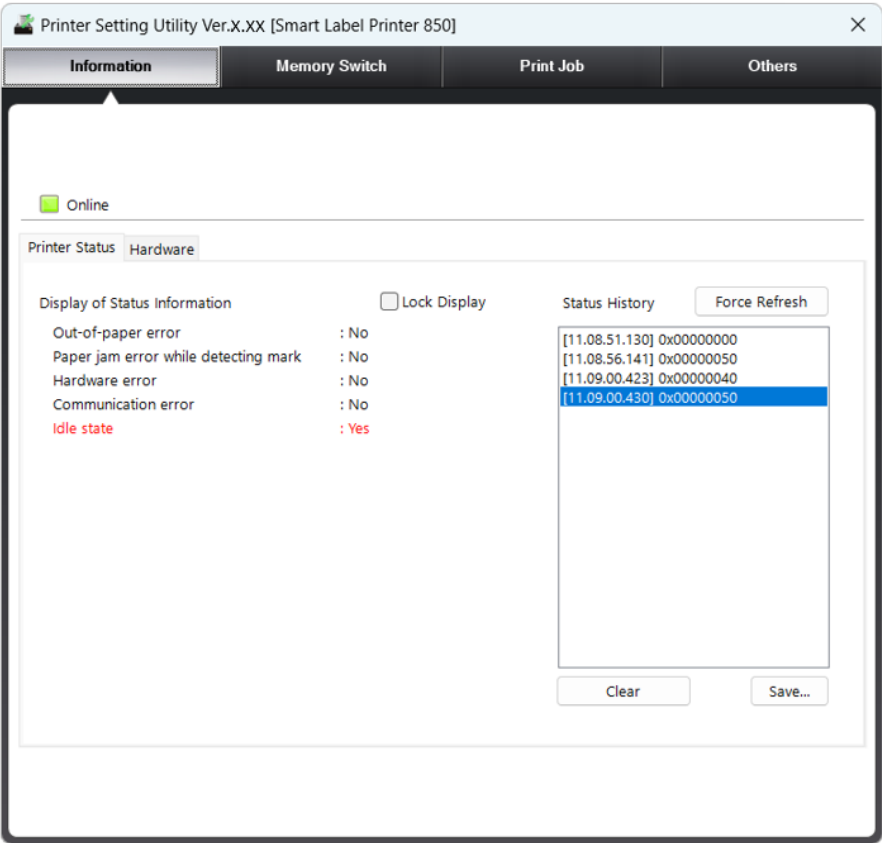


Figure 4-5 [Utility Setting] Window

See "SII Printer Setting Utility for Windows User's Guide" for SLP800 series for details of each utility's function.

Chapter 5 Page Setup

This chapter describes the paper settings.

The terms used in this chapter are listed below.

Definition	Description
Height (Paper height)	Vertical size when the paper feed direction is "portrait"
Width (Paper width)	Horizontal size when the paper feed direction is "portrait"
Output paper size	Paper (roll paper) size which is actually used for printing
Paper size	Printable area size specified on the printer driver
Standard paper	Paper sizes that are automatically registered on installation
User defined paper	Custom paper sizes that can be newly registered by users

Caution

- ◆ When specifying user defined paper, use the paper size (printable area size) instead of the output paper size.

The following figure illustrates a print image.

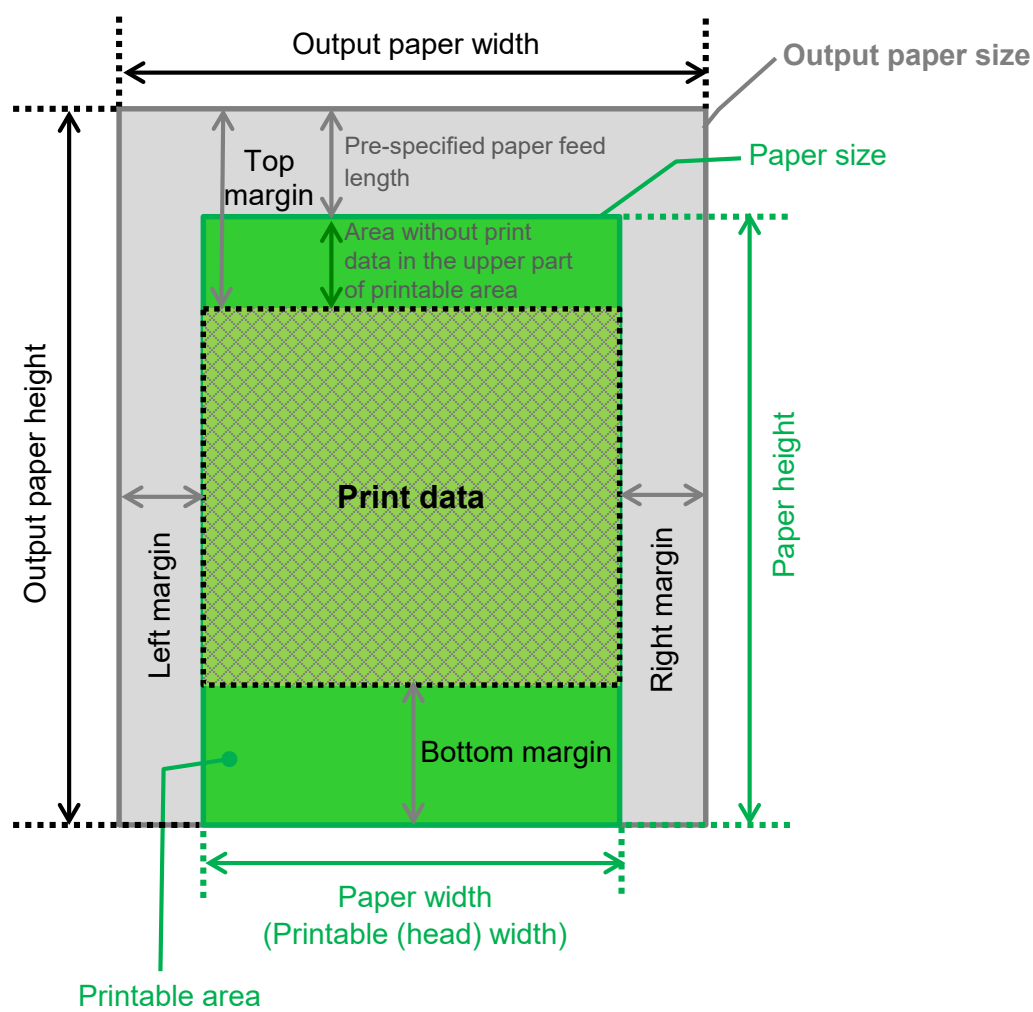


Figure 5-1 Print Image

5.1 Paper Size

The following table describes paper sizes available for each output paper width.

Driver Name	Output Paper Width	Paper Type	Paper Name	Paper Size / Range	
				Width	Height
SII SLP850	58 mm	Custom*1	-	9.5 mm to 62 mm*2	11.25 mm to 203 mm
		Non-adhesive tags	SLP-ENTL Name Badge	48 mm	78.7 mm
			SLP-ENTL 300 DPI	48.8 mm	78.7 mm
			SLP-FCS2 Appointment	48 mm	78.7 mm
			SLP-FCS2 300 DPI	48.8 mm	78.7 mm
		SLP Label	SLP-JWL Jewellery	48 mm	24.4 mm
			SLP-JWL 300 DPI	48.8 mm	24.6 mm
			SLP-DRL Diskette	48 mm	63.9 mm
			SLP-DRL 300 DPI	48.8 mm	63.9 mm
			SLP-FW Folder/Binder	48 mm	185.4 mm
			SLP-FW 300 DPI wide	48.8 mm	185.4 mm
			SLP-NR,-NB Name	48 mm	63.9 mm
			SLP-NR 300 DPI	48.8 mm	63.5 mm
			SLP-SRL Shipping	48 mm	95.8 mm
			SLP-SRL 300 DPI	48.8 mm	95.8 mm
			SLP-TP Security	48 mm	20.6 mm
			SLP-TP 300 DPI	48.8 mm	20.6 mm
			SLP-ZIP Zip Disk	48 mm	54.9 mm
			SLP-ZIP 300 DPI	48.8 mm	54.9 mm
			SLP-VTL VHS Face	45 mm	72.4 mm
			SLP-35L,-35LY 35mm	36.6 mm	9.1 mm
			SLP-FN Folder/Binder	37.6 mm	185.4 mm
	39 mm		SLP-RTL Retail Label	36.8 mm	31.8 mm
			SLP-2RLE Large	34.8 mm	83.3 mm
			SLP-STAMP1 Digital	35.6 mm	34.5 mm
		SLP-STAMP2 Digital	35.6 mm	59.7 mm	
	31 mm	SLP-1RL,-2RL Address	24 mm	83.3 mm	
		SLP-MRL Multipurpose	24 mm	44.5 mm	
		SLP-RND Round	24 mm	22.6 mm	
		SLP-RTN Return Label	15.9 mm	42.9 mm	
		SLP-TRL Address	24 mm	83.3 mm	
		SLP-VSL VHS Spine	17.8 mm	141 mm	
		SLP-4AFL File Folder	13.2 mm	81.3 mm	
		SLP-27210 DAT	9.1 mm	66 mm	

*1: For the Function Setting MS1-2 to 3 (Thermal Paper) of the printer memory switches, select "Non-adhesive tag" or "SLP Label".

*2: The paper width (printable width) is 48.8 mm. If it exceeds 48.8 mm, it will be printed center aligned at 48.8 mm.

5.2 How to Add User Defined Paper

This section shows an example of the procedure to add a user defined paper size.

1. Select the [Forms] tab in the [Print Server Properties] window.
2. Select the [Create a new form] check box.
3. Enter the paper name in the [Form name] field.
4. Select "Metric" for [Units:].
5. Enter the width for the user defined paper in the [Width] field in [Paper size].
6. Enter the height for the user defined paper in the [Height] field in [Paper size].
7. Click the [Save Form] button.

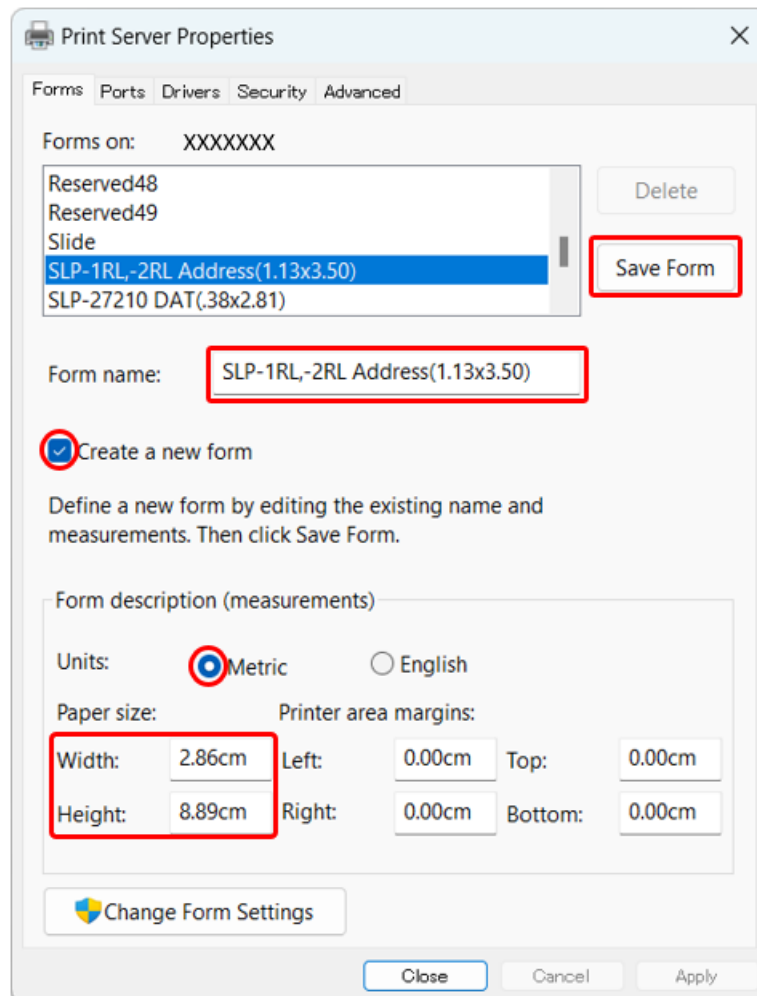


Figure 5-2 [Print Server Properties] Window

Caution

- ◆ Adding a user defined paper size requires logon to the computer with administrator privileges.
- ◆ When adding a user defined paper size, review [Paper Size / Range] in "5.1 Paper Size". Among the paper sizes listed in [Forms on:], only those within the size ranges specified in [Paper Size / Range] in "5.1 Paper Size" are available for the printer driver.