



SII Printer Setting Utility for Windows User's Guide

Rev.01

[Products]

SLP800 Series

Seiko Instruments Inc.


Copyright©2025 by Seiko Instruments Inc. All rights reserved.

Microsoft® and Windows® are registered trademarks of Microsoft Corporation in the U.S., Japan, and other countries.

Bluetooth® is a registered trademark of Bluetooth SIG, Inc.

Seiko Instruments Inc. (hereinafter referred to as "SII") has prepared this manual for use by SII personnel, licensees, and customers. The information contained herein is the property of SII and shall not be reproduced in whole or in part without the prior written approval of SII.

SII reserves the right to make changes without notice to the specifications and materials contained herein and shall not be responsible for any damages (including consequential) caused by reliance on the materials presented, including but not limited to typographical, arithmetic, or listing errors.

SII  is a trademark of Seiko Instruments Inc.

Introduction

This manual describes "SII Printer Setting Utility for Windows" (hereinafter referred to as the "software") provided by Seiko Instruments Inc. (hereinafter referred to as "SII").

Notation in This Manual

The notation in this manual is described.

Operation and Display

In principle, this manual is written on the basis of the following conditions:

- Screenshots and display layouts of Windows 11
- Operating instructions with a mouse and a keyboard

Terms

The terms used in this manual are defined as below.

Term	Description
Printer name	Friendly name which is displayed in the Printer Folder and can be changed by users
Driver name	Unique model name for identifying the printer driver
Printer Folder	Folder displayed by the following operations: [Devices and Printers] folder displayed by selecting [Control Panel] => [Hardware and Sound] => [Devices and Printers]
Printer command	Instruction to control the printer, described in "SLP850 SERIES THERMAL PRINTER TECHNICAL REFERENCE".
Memory switch	Feature for [Function Settings] described in "SLP850 SERIES THERMAL PRINTER TECHNICAL REFERENCE" or "SLP850 SERIES Thermal Printer USER'S GUIDE".
Printer status	The status automatically sent from the printer when the printer state changes. For details of response, see "List of Status".
Dot	A unit that configures the print. Prints with dot density of 11.8 dots per 1 mm.

*1 : Integrated Printer Driver

Chapter 1	Overview	1-1
------------------	-----------------	------------

1.1	Target Products _____	1-1
1.2	Operating Conditions _____	1-1

Chapter 2	Installation	2-1
------------------	---------------------	------------

Chapter 3	Method of Operation	3-1
------------------	----------------------------	------------

3.1	Screen Layout _____	3-2
3.1.1	Utility Panel	3-2
3.1.2	Utility Setting Screen	3-2
3.2	Functions _____	3-3
3.2.1	Information	3-3
3.2.2	Memory Switch	3-8
3.2.3	Print Job	3-11
3.2.4	Others.....	3-13

Chapter 1 Overview

This chapter describes the overview of this software.

This software is for confirming and setting various information of the printer.

1.1 Target Products

The products covered by this software are as follows.

Printer	Printer Driver
SLP800 series	SII Printer Driver for Windows

1.2 Operating Conditions

The operating conditions of this software basically follow the operating environment of the printer driver, and the settings and limitations of the printer. For details of the operating environment of the printer driver, see "SII Printer Driver for Windows User's Guide".

Chapter 2 Installation

For the installation, see "SII Software Package for Windows Installation Guide".

Chapter 3 Method of Operation

This chapter describes the function of the software.

Caution

- ◆ The [Printer Properties] screen cannot be operated while the software is being activated.

3.1 Screen Layout

The screen layout of the software is described.

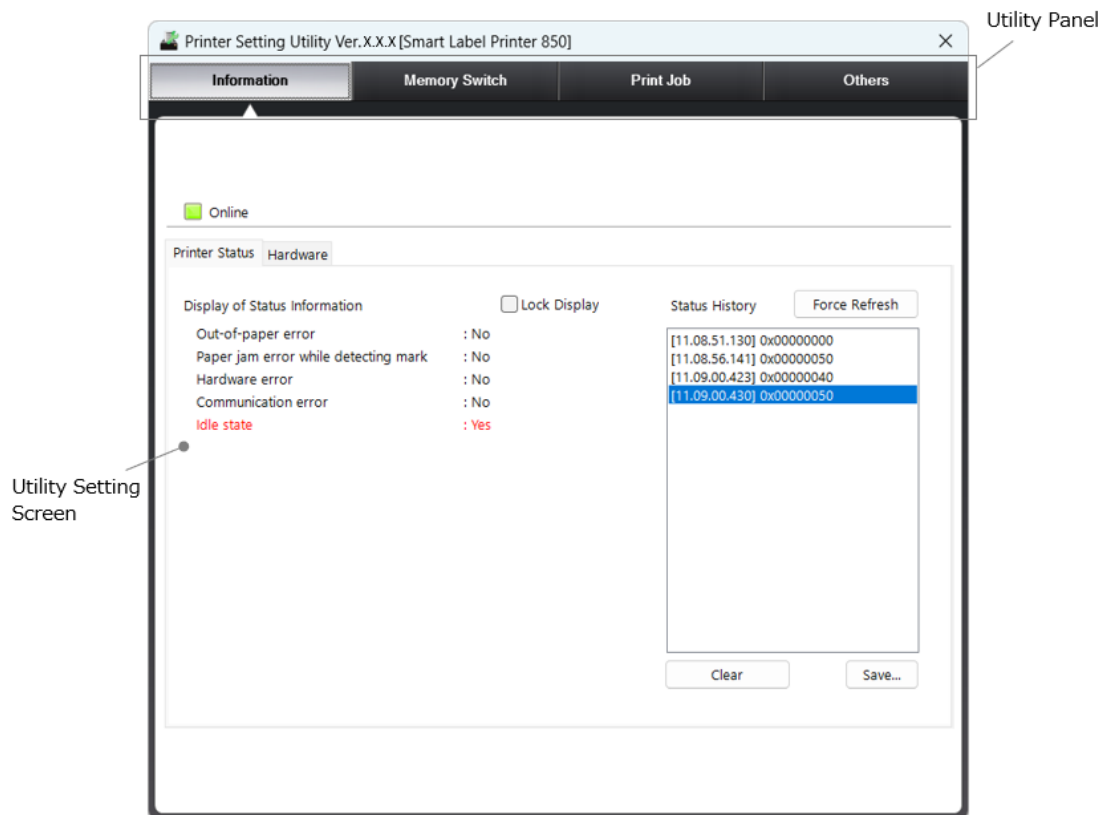


Figure 3-1 Utility Setting Screen

3.1.1 Utility Panel

Various functions are displayed in the utility panel. By clicking the name of each function, you can move to other functions. See "3.2 Functions" for details of each function.

Item	Description
Information	Displays various information of the printer.
Memory Switch	Sets the memory switches.
Print Job	Sets the print data output per job.
Others	Exports the settings of this software to a file, or imports an exported file.

3.1.2 Utility Setting Screen

Information display or setting of each function can be performed. See "3.2 Functions" for details of each function.

3.2 Functions

The functions of the software are described.

3.2.1 Information

Displays various information of the printer.

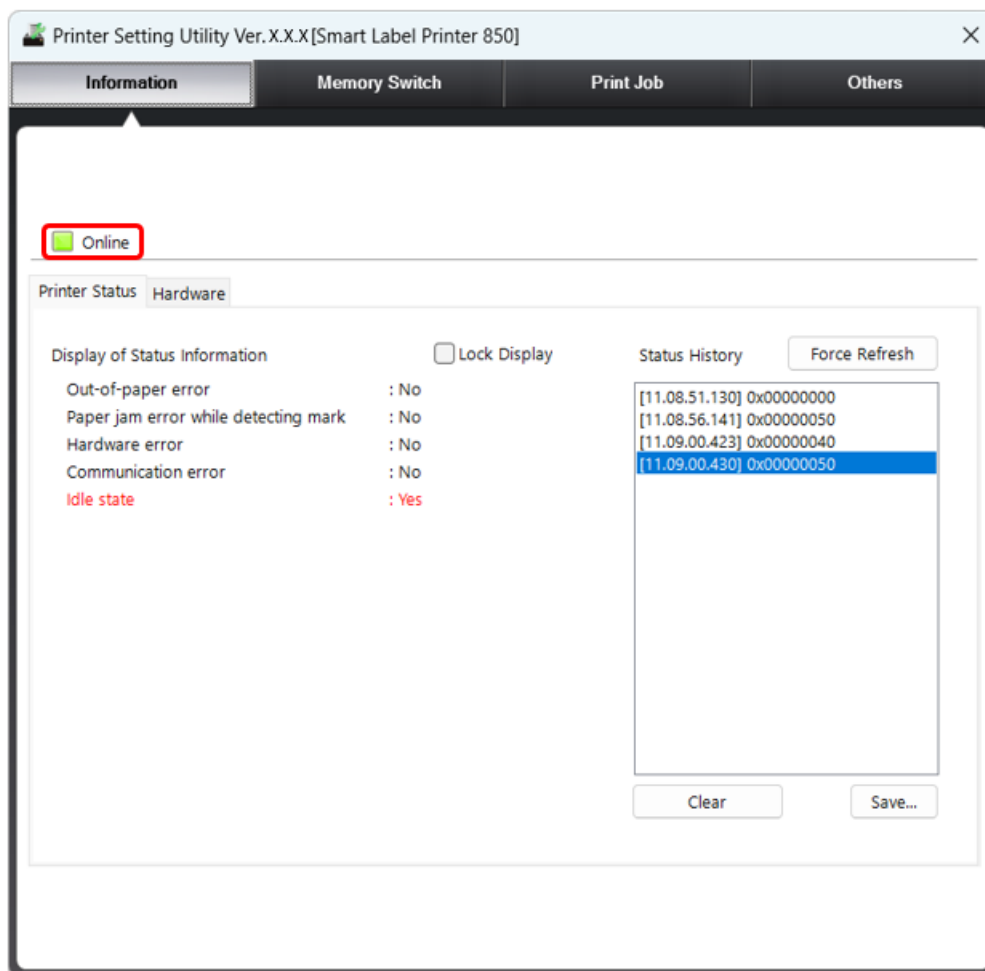


Figure 3-2 [Information] Screen

Item	Description
Connection state	Displays the connection state with the printer. Online (Indicator: green) Offline (Indicator: gray)

*: When using serial communication, offline status is not notified.

Display of Printer Status

Select the [Printer Status] tab in the [Information] screen and display the screen below.

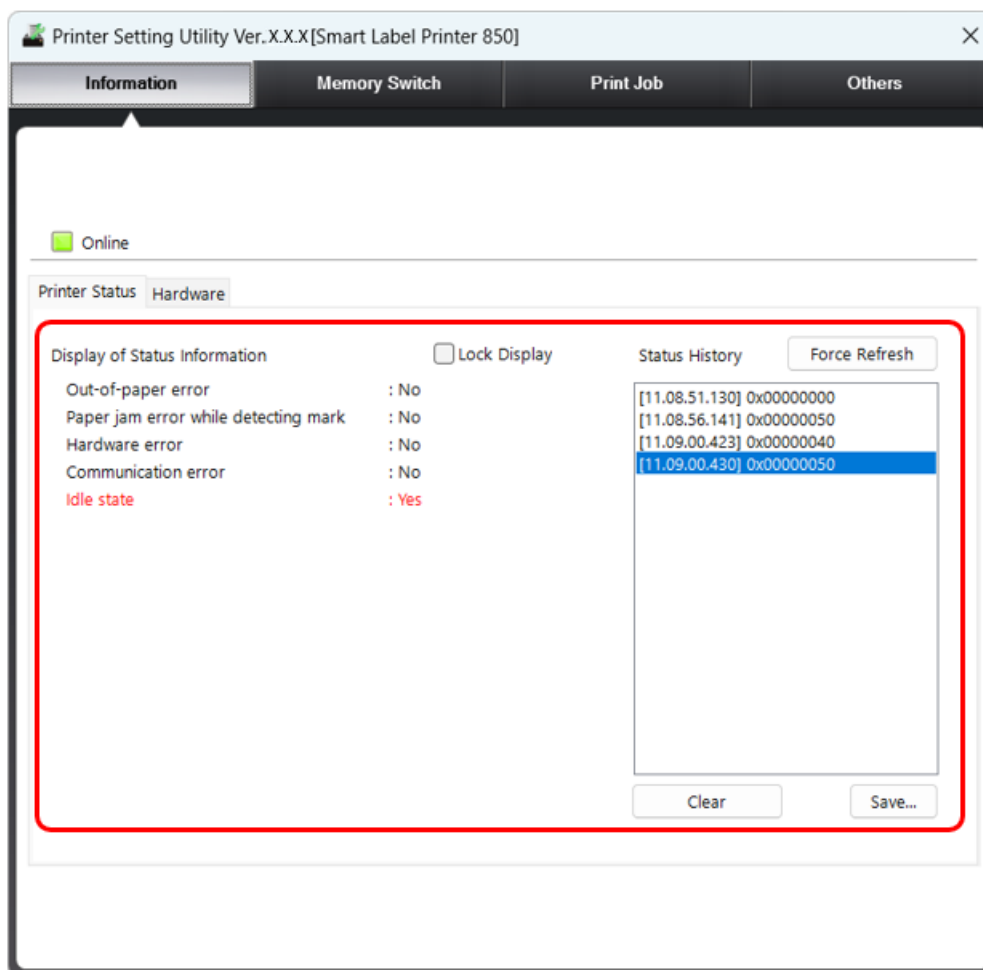


Figure 3-3 [Printer Status] Screen (Example)

Item	Description
Display of Status Information	Displays the printer status information. Displays the status information selected in [Status History]. When information cannot be obtained from the printer, "-" is displayed in the status area. For the status of the target products, see "List of Status".
Lock Display	Used to select whether to lock the selection state of [Status History]. When [Status History] is blank, the operation cannot be performed. When the checkbox is off <ul style="list-style-type: none"> The latest printer status is always selected in [Status History], and every time the printer status changes, [Status History] automatically scrolls. When the checkbox is on <ul style="list-style-type: none"> Even when the printer status changes, the information is not updated and [Status History] does not automatically scroll.

Item	Description
Status History	<p>Displays the status information of the printer status in a list.</p> <ul style="list-style-type: none"> Response time: [hh.mm.ss.fff] (hour: 00 to 23, minute: 00 to 59, second: 00.000 to 59.999) Response content: The printer status is displayed in hexadecimal (32 bits) <p>A maximum of 100 history items can be displayed in [Status History (H)]. After that, the oldest one is deleted. For more information about status, see "List of Status"</p>
Clear	<p>Clears all status information displayed in [Status History].</p> <p>When [Status History] is blank, the operation cannot be performed.</p>
Force Refresh	<p>Issues the printer command to forcibly get the printer status.</p> <p>When the retrieved printer status is the same as the most recent retrieved printer status, the display is not updated.</p>
Save...	<p>Saves the data of [Status History] as a text file (*.csv).</p> <p>When [Status History] is blank, the operation cannot be performed.</p> <p>The printer status history that is to be saved is the content of [Status History] at the time the [Save...] button is clicked. Printer status responses after this point are not reflected in the saved file.</p>

List of Status

The following corresponding bits are displayed as a hexadecimal (32 bits) format in [Status History]. An retrievable response value can be found by adding the following values. However, all bits turn 0 for disconnection, and other status data is ignored.
The values not described above are reserved.

Status history can be saved as a text file. For saving, see "Saving Status History".

Status	Corresponding Bit	Description
Out-of-paper error	0x00000001	0: No (No error) 1: Yes (Error)
Paper jam error while detecting mark	0x00000002	0: No (No error) 1: Yes (Error)
Hardware error	0x00000004	0: No (No error) 1: Yes (Error)
Communication error	0x00000008	0: No (No error) 1: Yes (Error)
Idle state	0x00000010	0: No 1: Yes (Idle state)

Saving Status History

The procedure for saving the status history as a text file is described below.

1. Click the [Save...] button in the [Printer Status] screen.
2. Specify the location and file name to save the file in the [Save As] dialog.
3. Click the [Save] button in the [Save As] dialog.

Display of Hardware

Select the [Hardware] tab in the [Information] screen and display the following screen.

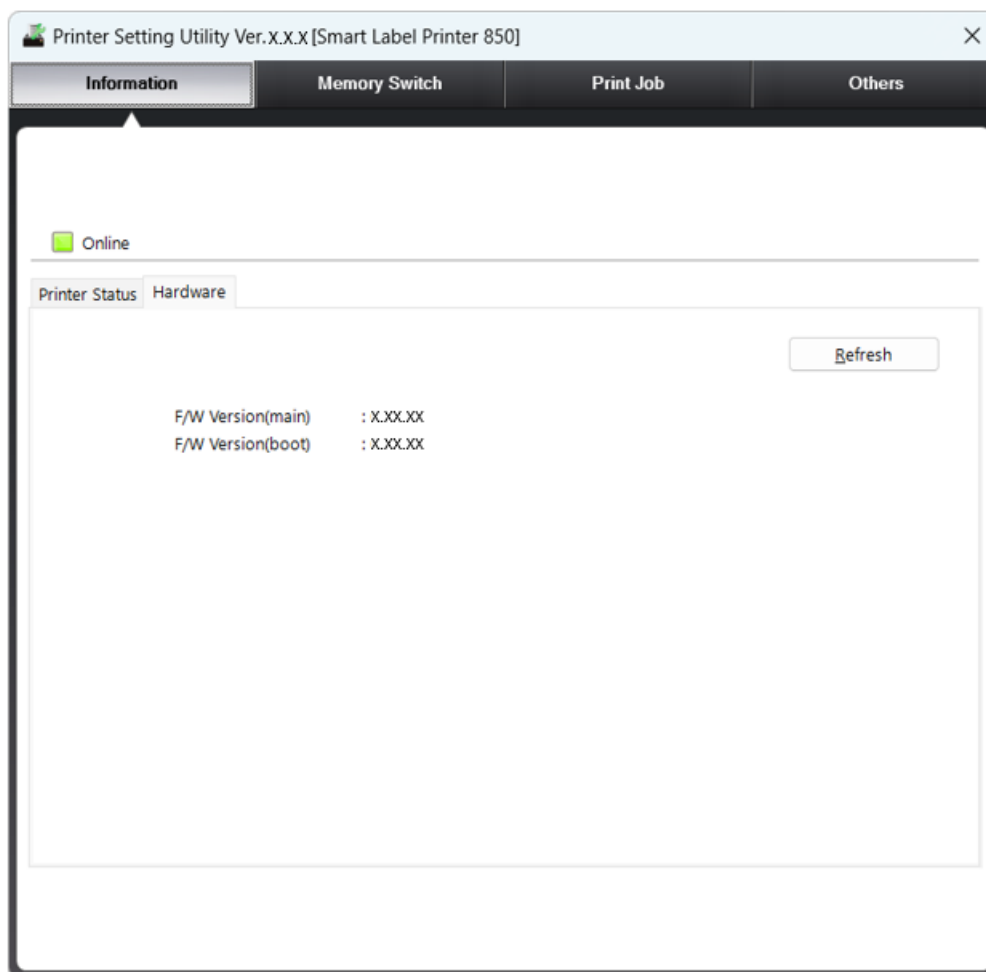


Figure 3-4 [Hardware] Screen

Item	Description
Hardware	Displays the following hardware information retrieved from the printer. <ul style="list-style-type: none">• F/W Version(main)• F/W Version(boot)
Refresh	Gets the hardware information from the printer again.

3.2.2 Memory Switch

Sets the memory switches.
The items displayed varies depending on the printer. For details of the memory switch, see "SLP850 SERIES Thermal Printer USER'S GUIDE".

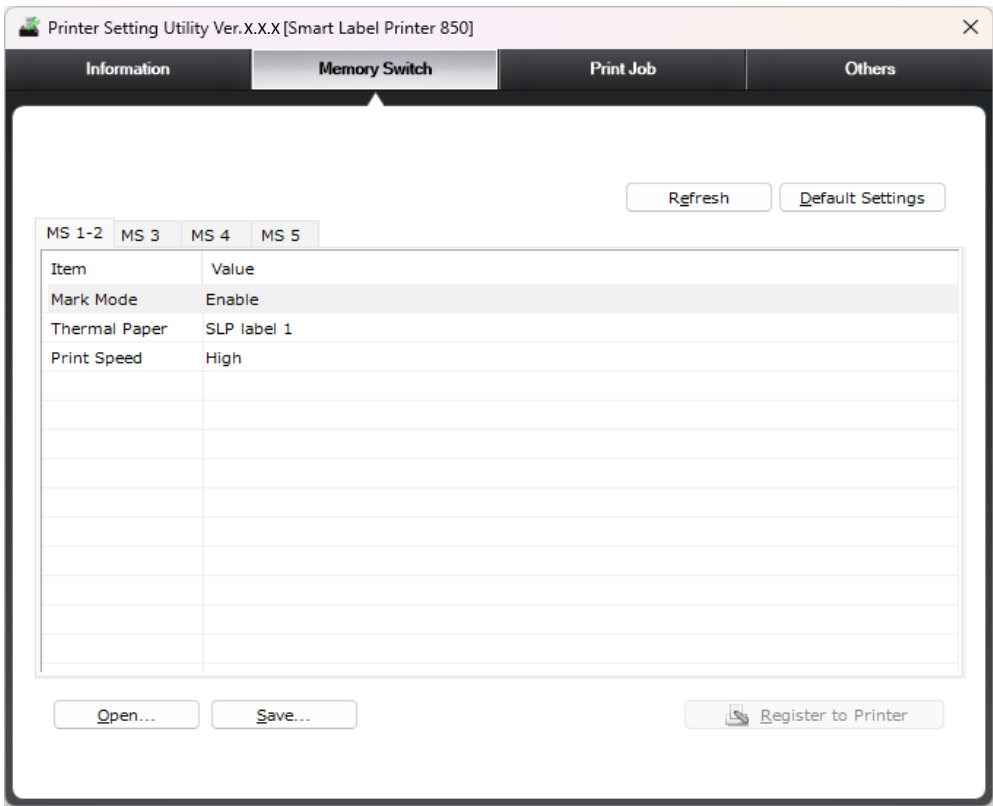


Figure 3-5 [Memory Switch] Screen (Example)

Caution

- ◆ [Register to Printer] of the memory switch requires logon to the computer with administrator privileges.

Item	Description
Refresh	Loads the current settings of the printer and displays them. The settings currently being edited will be lost.
Default Settings	Restores the factory default settings. The settings currently being edited will be lost. See "SLP850 SERIES Thermal Printer USER'S GUIDE" for the factory default settings of the memory switch. Not available when the value is not retrieved from the printer.

Item	Description
[MS] tabs	Used to switch the display of the memory switch items.
Item	Displays item names of the memory switch function.
Value	<p>Displays the values of the memory switch retrieved from the printer or memory switch file.</p> <p>To change the value, double-click it to enter edit mode, and select a value from the drop-down list or enter a new value in the edit box.</p> <p>A value that is out of the range is automatically rounded to a value within the range.</p> <p>When the loaded value is changed, it is displayed in red.</p> <p>"—" is displayed and editing is not possible when information cannot be retrieved from the printer at starting the memory switch.</p> <p>When [Register to Printer] is clicked, the value is reflected.</p>
Open...	<p>Loads the saved memory switch file (*.sms) and displays the settings.</p> <p>When the value is not retrieved from the printer, the operation cannot be performed.</p>
Save...	<p>Saves the settings on the current screen as a memory switch file (*.sms).</p> <p>Not available when the value is not retrieved from the printer.</p>
Register to Printer	<p>Changes the printer settings with the setting content displayed on the screen.</p> <p>Not available when the value is not retrieved from the printer.</p> <p>Not available when the value retrieved from the printer is not changed.</p>

Registering Memory Switch Settings to Printer

The procedures for registering the memory switch settings to the printer are described below.

Registration Procedure When Changing Settings

1. Switch [MS] tabs to display the target memory switch items.
2. Select or enter values for the target memory switch items.
3. Click the [Register to Printer] button.

Registration Procedure When Loading from Memory Switch File

1. Click the [Open...] button in the [Memory Switch] screen.
2. From the [Open] dialog, specify the memory switch file in which the settings are saved.
3. Click the [Open] button in the [Open] dialog.
4. Click the [Register to Printer] button.

Registration Procedure When Restoring to Default Settings

1. Click the [Default Settings] button.
2. When the confirmation screen is displayed, click the [Yes] button.
3. Click the [Register to Printer] button.

Saving Memory Switch Settings

The procedure for saving the memory switch settings as a memory switch file is described below.

1. Click the [Save...] button in the [Memory Switch] screen.
2. In the [Save As] dialog, specify the location and the file name to save the memory switch file.
3. Click the [Save] button in the [Save As] dialog.

3.2.3 Print Job

Sets the print data output per job.

Select [Print Job] in the utility panel and display the screen below.

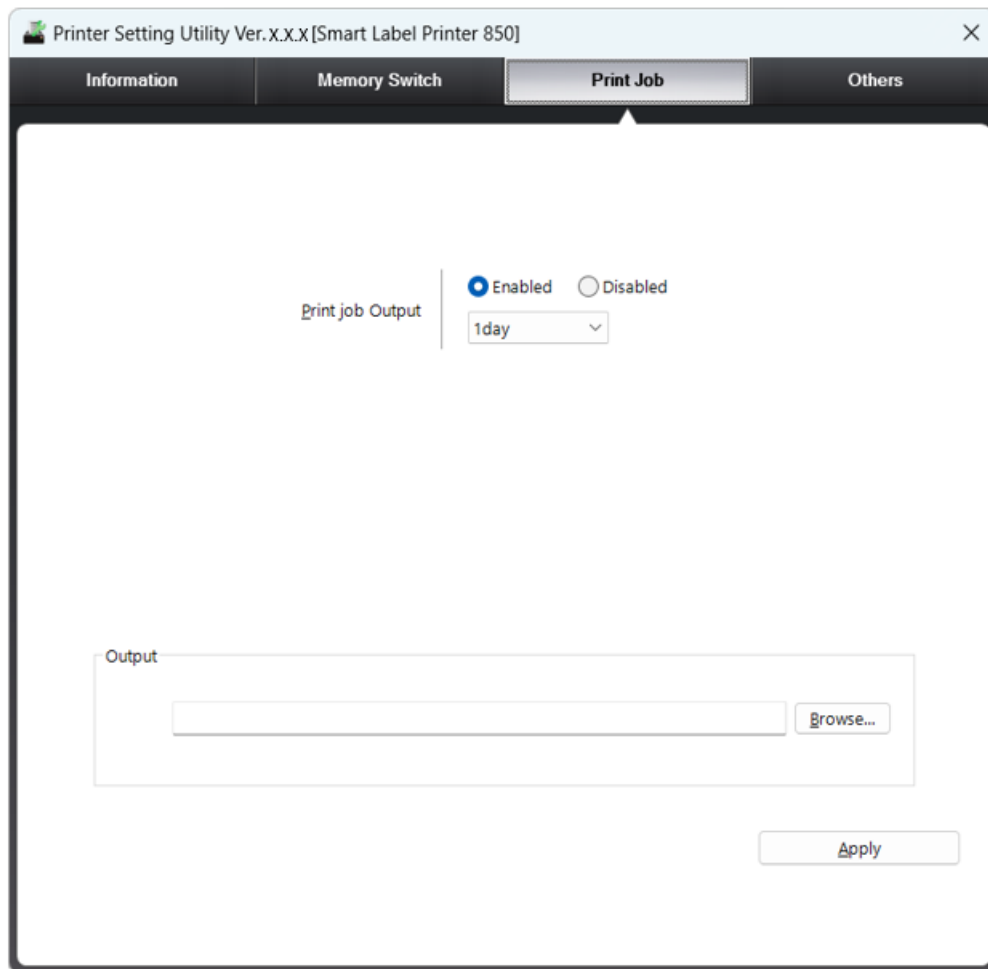


Figure 3-6 [Print Job] Screen

Caution

- ◆ Privileges to the folder are required to write print jobs.
- ◆ When this function is used in a printer sharing environment, it cannot be set from the client side.

Reference

- ◆ When multiple users use the same folder, specify a folder that can be accessed by all users.

Item	Description ("": Default)
Print job Output	<p>Enables or disables the print job information output.</p> <ul style="list-style-type: none"> • Enabled • Disabled <p>When "Enabled" is selected, select the retention period.</p> <ul style="list-style-type: none"> • 1 day • 3 days • 10 days • 30 days • 90 days <p>For "Enabled", the data sent to the printer at printing is saved in a file per job. Print job information that exceeds the retention period is cleared when print job information is output. The actual retention period may be longer by 1 day maximum.</p>
Output	<p>Sets the output destination of the print job.</p> <p>Enter the location to create the folder for saving the print job information, or use the [Browse...] button to specify the output destination in the [Browse Folder] dialog.</p> <p>The maximum path length that can be set is 260 characters.</p> <p>Not available when [Print job Output] is set to "Disabled".</p> <p>The print job information is saved as a print job file (*.pm) per job with a file name indicating the time <hhmm_ss(fff)> of when the file is created.*1</p> <p>The saved print job information is stored in a folder per date (folder name <yyyyMMdd>).</p>
Browse...	<p>Used to specify the location to create the folder where the print job information is saved.</p> <p>The specified destination is displayed in [Output].</p> <p>Not available when [Print job Output] is set to "Disabled".</p>
Apply	Determines the output destination and starts the print job output.

*1: The meanings of the symbols used for the file name and the folder name are as follows. Each value comes from System Clock of Windows.
 yyyy : year
 MM : month
 dd : day
 hh : hour
 mm : minute
 ss : second
 fff : millisecond

Changing Print Job Output Settings

The procedure for changing the print job output settings is described below.

1. Select "Enabled" for [Print job Output], and then select the retention period.
2. Enter the output destination of the print job information in [Output].
3. Click the [Apply] button.

3.2.4 Others

Exports the settings of this software to a file, or imports an exported file.

The setting content to be imported or exported is the printer driver setting information.

Select [Others] in the utility panel and display the screen below.

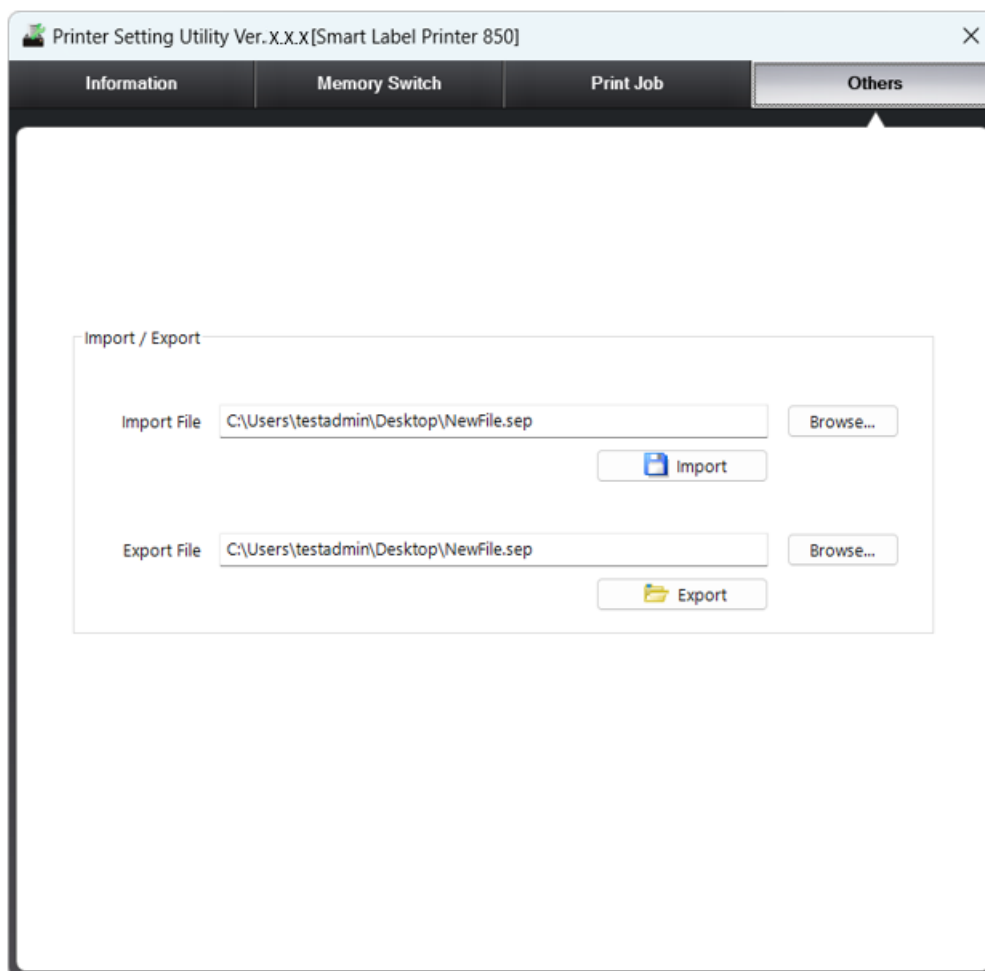


Figure 3-7 [Others] Screen

Item	Description
Import/Export	
Import File	Used to enter the file name of the saved export file (*.sep). Alternatively, specify the save destination and file name of the file to import in the [Open] dialog from the [Browse...] button next to the [Import File] field.
	Browse... Used to specify the export file to import from the [Open] dialog. The specified content is displayed in the [Import File] field.
Import	Imports the printer driver setting information from the file specified in the [Import File] field. Not available to import export files exported in different language environments. In addition, when [Paper Size] for the import file is the user defined paper, the settings may not be reflected.

Item		Description
	Export File	Used to enter the file name of the export file. Alternatively, specify the save destination and file name in the [Save As] dialog from the [Browse...] button next to the [Export File] field.
	Browse...	Used to specify the location and file name to save the export file from the [Save As] dialog. The specified content is displayed in the [Export File] field.
	Export	Exports the printer driver setting information to the file specified in the [Export File] field.

Importing Settings

The procedure for importing the settings is described below.

1. Click the [Browse...] button next to the [Import File] field.
2. Select the file to import from the [Open] dialog.
3. Click the [Open] button in the [Open] dialog.
4. Click the [Import] button.

Exporting Settings

The procedure for exporting the settings is described below.

1. Click the [Browse...] button next to the [Export File] field.
2. In the [Save As] dialog, specify the save destination and file name of the export file.
3. Click the [Save] button in the [Save As] dialog.
4. Click the [Export] button.