

Thermal Printer

Product Catalog 2023



RP-F10

CAP06 Series



Low Voltage

24 Volt

POS Printer

Mobile Printer

POS



MP-B30

Mobile

Mechanism

Smart Label Printer

Other Models
Line up

Why direct thermal?

Direct thermal printers are widely used in everyday life, including medical devices, self-service technology, point-of-sale, mobile applications, and more.

EFT-POS



EFT-POS (Electronic Funds Transfer at Point of Sale) is expanding market with rise in demand!

SII offers best solution of thermal printing to EFT-POS market since its dawn. SII Thermal Printer has contributed to spread thermal printing technology in EFT-POS market and became our bestseller mechanism.



- 2 inch
- Low Voltage
- Small-footprint

POS/ECR

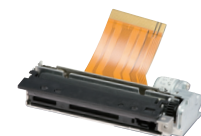
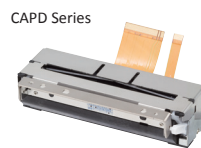


Using thermal printer in ECR (Electronic Cash Register) has been started in European market and Now spread throughout the world!

In recent years, thermal printer is widely used for ECR market expected higher cost-effective, and for POS market expected sophisticated-features & heavy-duty.



- 2 to 3 inch
- High speed printing
- Small-footprint



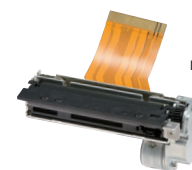
LTPD Series

Medical Measuring



Best for data and chart printing, what is more easy maintenance and quiet!

SII Thermal Printer is quiet, cleanness and easy maintenance which has been adapted for the medical and the measurement equipment for long time.



- 2 to 4 inch
- Quiet
- Chart printing



DPU-D2

Direct thermal technology produces an image by applying a heating element to specially treated thermal paper. Unlike other printing formats, it operates with few moving parts and does not consume toner or ribbons. This translates into reliable long-life performance and reduced maintenance costs.

With precision engineering Seiko Instruments continues to build on direct thermal's advantages.

We offer a complete line of reliable high performance printers with flexible, small footprint designs that help streamline the integration process. Rely on dependable Seiko Instruments printers and components to tackle even the toughest thermal printing requirements.



CD/ATM Kiosk Lottery



Reliable SII's thermal printers are the best matches with the KIOSK terminals printing receipt and ticket and so on!

SII's wide-variety of product line helps any printing demands on self-service terminal / ATM / ticketing applications.



CAPM347



LTP04
(With auto cutter)

2 to 3 inch

High reliability

Auto cutter



Mobile



Demand of Mobile printing is expanding in various applications!

Mobile printing has become a critical tool in industrial, logistics and retail market.

With utilizing smartphone or tablet PC, it will be widely expanding its business field moreover.



MP-A40



MP-B20

2 to 4 inch

Compact & light-weight

Wireless

2023

Thermal Printer Product Catalog

CONTENTS

- 1 Why direct thermal printing
- 3 Product Classification Table
- 4 Peripherals Guide
- 5 Low Voltage
LTPD245/345, CAPD245/345
LTP01 Series, LTP02 Series
DPU-D Series
- 10 24 Volt
CAP06-247/347, LTPD247/347,
CAPD247/347, CAPM Series
LTP04
- 15 POS Printer
RP-E10 Series, RP-D10 Series
RP-F10 Series, DSP-A01
- 19 Mobile Printer
MP-A40, MP-B30/MP-B30L
MP-B20, DPU-S Series
- 23 Smart Label Printer
SLP720RT
- 24 Other Models Line up
LTPZ Series, LTPV Series
LTPC Series, LTPH245
LTP1245, LTP8235
CAPG247/LTPG247, LTP2000 Series
LTPF Series
- 26 Thermal Paper List

Product Classification Table

Line Thermal Printer Mechanism

Classification	Product	Paper width (mm)	Resolution (dots/mm)	Product category
Low voltage	CAPD245	58	8	Easy paper operation mechanism
	CAPD345	80	8	
	LTPD245	58	8	
	LTPD345	80	8	
	LTP01	58	8	
	LTP02	58	8	
24 volt	LTP04	80	8	Easy paper operation mechanism
	CAP06-247	58	8	
	CAP06-347	58 / 80	8	
	CAPD247	58	8	
	CAPD347	80	8	
	LTPD247	58	8	
	LTPD347	80	8	
	CAPM347	58 / 60 / 80 / 83	8	Loading mechanism
CAPM347	58 / 60 / 80 / 83	8		

Printer Unit

Classification	Product	Paper width (mm)	Resolution (dots/mm)
Mobile printer	MP-B20	58	8
	MP-B30	80	8
	MP-B30L	80 / 76.2 / 58	8
	MP-A40	80 / 100 / 105 / 112	8
	DPU-S245	58	8
	DPU-S445	112	8
POS printer	RP-F10	58 / 80	8
	RP-E10 / E11	58 / 80	8
	RP-D10	58 / 80	8
Smart Label Printer	SLP720RT	40/58 *	8
Panel-mount printer unit	DPU-D2	58	8
	DPU-D3	80	8

* Restick liner-free label, Receipt paper

Low Voltage

24 Volt

POS Printer

Mobile Printer

Smart Label Printer

Other Models
Line up

Peripherals Guide

Printer Mechanism

Classification	Product	Auto cutter	Interface	CPU
Low voltage	CAPD245	Included	IFD501-01UK IFD501-01SK	PTD50P01
	CAPD345	Included		
	LTPD245	-		
	LTPD345	-		
	LTP01	-	-	-
	LTP02-245-13x	-	-	PT02-5SU
	LTP02-245-A3	-	-	-
	LTP02-245-C1	-	-	PT02-3U
24 volt	LTP04	ACU04	-	-
	CAP06-247	Included	IF06-7S IF06-7U	PT06-57SU
	CAP06-347	Included		
	CAPD247	Included	IFD001-01UK IFD001-01SK	PTD00P01
	CAPD347	Included		
	LTPD247	-		
	LTPD347	-		
	CAPM347	Included	IFM201-01UK	PTM20P01

Printer Unit

Product category	Product	Power supply	Battery pack	Battery charger	Power cable	Other
Mobile printer	MP-B20	-	BP-B0326 (Included)	-	-	Cradle CDL-B01K-1
	MP-B30/B30L	PW-F1215-W1 (Bundled item)	BP-A0720-B1 (Bundled item)	PWC-A071-A1 (single)	-	Cradle CDL-B02K-1 Car charger CC-A12-A1 Carrying case CVR-301-1 Strap/Strap attachment STR-A03-1/AMT-B30-1 Partition Plate* PARTITION PLATE(76.2)SET PARTITION PLATE(58)SET
				PWC-A074-A1 (quad)		
	MP-A40	PW-D0940-W2	BP-A0720-B1	PWC-A071-A1 (single)	CB-JP04-18A CB-US04-18A CB-CE01-18B CB-UK01-20A	Car charger CC-A12-A Strap STR-A03-1 Carrying case CVR-402-1
				PWC-A074-A1 (quad)		
	DPU-S245	PW-D0940-W2	BP-L0719-B1	PWC-L07C1	CB-JP04-18A CB-US04-18A CB-CE01-18B CB-UK01-20A	Carrying case CVR-C01-1
	DPU-S445	PW-D0940-W2	BP-L0725-B1	PWC-L07C1	CB-JP04-18A CB-US04-18A CB-CE01-18B CB-UK01-20A	Carrying case CVR-B01-1
	POS printer	RP-F10	PW-G2421-W1	-	-	CB-JP08-20A
CB-US06-20A						
CB-CE05-20A						
CB-UK03-20A						
Smart label printer	SLP720RT	PW-H2415-W1 (Bundled item)	-	-	CB-JP08-20A	Wall mounting kit WLK-B01-1 Back plate BCP-A01-K BCP-A01-W
					CB-US05-20A	
					CB-CE04-20A	
					CB-UK03-20A	

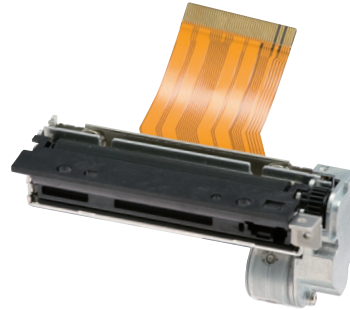
* MP-B30L only

Thermal Printer Mechanism

LTPD245/345



LTPD345 (Horizontal)



LTPD245 (Vertical)

- High performance in compact design
- Max. printing speed (LTPD245): 100mm/sec
- Platen latch function
- Label printing *Under specific conditions only.

Model		LTPD245	LTPD345
Printing	Method	Thermal line dot printing	
	Number of dots/line	384	576
	Resolution (dots/mm)	8	
	Paper width (mm)	58 ⁺⁰ ₋₁	80 ⁺⁰ ₋₁
	Printing width (mm)	48	72
	Speed (mm/sec) max	100	80
Paper path		Curved	
Detection	Head temperature	By thermistor	
	Platen position	By mechanical switch	
	Out of paper	By photo interrupter	
Power supply (V)	Operation voltage (Vdd)	2.7 to 3.6 / 4.75 to 5.25	
	Operation voltage (Vp)	4.75 to 9.5	
Peak current (A)	Head	3.66 (9.5V / 64dots) / 5.49 (9.5V / 96dots)	3.60 (9.5V / 64dots) / 5.40 (9.5V / 96dots)
	Motor	0.6	
Service Life	Pulse activation (pulse)	100 million	
	Abrasion resistance (km)	50 ^{*1}	
Operating temperature (°C)		-10 to 50 ^{*1 *3}	
Dimensions (W×D×H mm)	Horizontal	69.0 × 30.0 × 15.0 ^{*2}	91.0 × 30.0 × 15.0 ^{*2}
	Vertical	69.0 × 15.0 × 30.0 ^{*2}	91.0 × 15.0 × 30.0 ^{*2}
Mass (g)	Approx. 40		Approx. 58

*1 Use recommended thermal papers. *2 Excluding protrusion. *3 -30°C to 70°C. Supported by designated conditions only.

Interface

Model	IFD501-01UK	IFD501-01SK
CPU	PTD50P01	
Thermal printer	LTPD245, LTPD345, CAPD245, CAPD345	
Operating voltage (V)	Vp: 4.75 to 9.5	
Character matrix (H×W dots)	16 dots characters: 16 × 8, 16 × 16 24 dots characters: 24 × 12, 24 × 24	
Character type	Extended graphics character set, Katakana character set 1, Katakana character set 2, Codepage 1252, User page, Downloaded character, Optional font, JIS 1st and 2nd level kanji, User-defined character	
Communication interface	USB (2.0)	Serial (RS-232C)
Dimensions (W×D×H mm)	69.0 × 50.0 × 14.0	
Software ^{*4}	Printer Driver/SDK, Linux® CUPS Filter/SDK	

*4 Please see official homepage "www.sii-ps.com" for details.

CPU

Model	PTD50P01
Thermal printer	LTPD245, LTPD345, CAPD245, CAPD345
Package form	120pin QFP
Operating voltage (V)	Vp: 4.75 to 9.5, Vcc: 3.0 to 3.6
Input frequency (MHz)	12 ± 0.01%
Configuration	C-MOS LSI
Communication interface	Parallel, Serial, USB
Character type	Extended graphics character set, Other characters is available with CGs ^{*5} or external ROM
Character matrix (H×W dots)	16 dots characters: 16 × 8, 16 × 16 24 dots characters: 24 × 12, 24 × 24
Dimensions (W×D×H mm)	16.0 × 16.0 × 1.7
Software ^{*6}	Printer Driver/SDK, Linux® CUPS Filter/SDK

*5 CG ROM: Japanese *6 Please see official homepage "www.sii-ps.com" for details.

Low Voltage

24 Volt

POS Printer

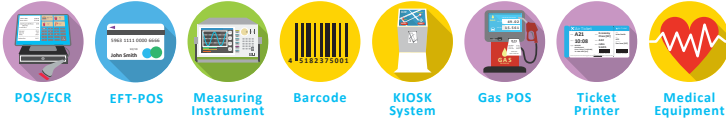
Mobile Printer

Smart Label Printer

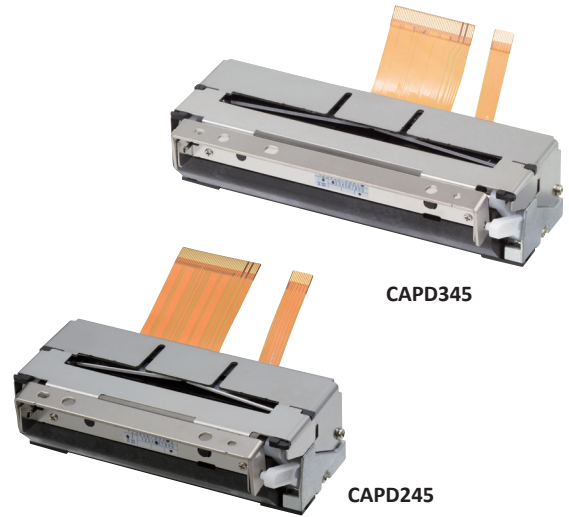
Other Models
Line up

Thermal Printer Mechanism

CAPD245/345



- Built-in auto-cutter
- Jam-free cutter design
- Max. printing speed (CAPD245): 100mm/sec
- Platen latch function



Model		CAPD245	CAPD345
Printing	Method	Thermal line dot printing	
	Number of dots/line	384	576
	Resolution (dots/mm)	8	
	Paper width (mm)	58 ⁺⁰ ₋₁	80 ⁺⁰ ₋₁
	Printing width (mm)	48	72
	Speed (mm/sec) max	100	80
Detection	Paper path	Curved	
	Head temperature	By thermistor	
	Platen position	By mechanical switch	
	Out of paper	By photo interrupter	
Power supply (v)	Operation voltage (Vdd)	2.7 to 3.6 / 4.75 to 5.25	
	Operation voltage (Vp)	4.75 to 9.5	6.5 to 9.5
Peak current (A)	Head	3.66 (9.5V / 64dots) / 5.49 (9.5V / 96dots)	
	Cutter	0.6	
Auto cutter	Method	Slide type	
	Paper thickness (μm)	54 to 80 ⁻¹	
	Cutting type	Full cut / Partial cut (Leave center point)	
	Operating time (sec/cycle) max	Approx. 1.0	
	Cutting pitch (mm) min	10	
Service Life	Cut frequency (cut/min) max	30	
	Pulse activation (pulse)	100 million	
	Abrasion resistance (km)	50 ⁻¹	
Operating temperature (°C)	-10 to 50		
Dimensions (W×D×H mm)	83.1 × 35.4 × 26.9 ^{*2}	105.1 × 35.4 × 27.2 ^{*2}	
Mass (g)	Approx. 125	Approx. 148	

*1 Use recommended thermal papers. *2 Excluding mounting part.

Interface / CPU ^{*3}

	Model
USB interface board	IFD501-01UK
Serial interface board	IFD501-01SK
CPU	PTD50P01
Software ^{*4}	Printer Driver/SDK, Linux® CUPS Filter/SDK

^{*3} Interface boards and CPU are mutual options with LTPDX45 series. ^{*4} Please see official homepage "www.sii-ps.com" for details.

Low Voltage

24 Volt

POS Printer

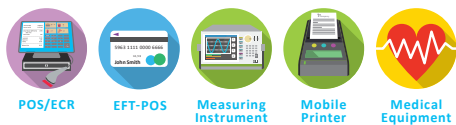
Mobile Printer

Smart Label Printer

Other Models Line up

Thermal Printer Mechanism

LTP01 Series



- Max. printing speed: 75mm/sec
- Compact and light-weight
- Compatible model with LTPZ245 (Horizontal)



LTP01-245

Low Voltage

24 Volt

POS Printer

Mobile Printer

Smart Label Printer

Other Models Line up

Model	LTP01-245		
	Without platen detecting switch		With platen detecting switch
Printing	Method	Thermal line dot printing	
	Number of dots/line	384	
	Resolution (dots/mm)	8	
	Paper width (mm)	58 ⁺⁰ ₋₁	
	Printing width (mm)	48	
	Speed (mm/sec) max	75	
	Paper path	Curved	
Detection	Head temperature	By thermistor	
	Platen position	—	By mechanical switch
	Out of paper	By photo interrupter	
Power supply (V)	Operation voltage (V _{dd})	3.0 to 3.6 / 4.75 to 5.25	
	Operation voltage (V _p)	4.75 to 9.5	
Peak current (A)	Head	3.76 (9.5V / 64 dots)	
	Motor	0.6	
Service Life	Pulse activation (pulse)	100 million	
	Abrasion resistance (km)	50 ^{*1}	
Operating temperature (°C)	0 to 50		
Dimensions (W×D×H mm)	69.8 × 32.7 × 15.3 ^{*2}		70.3 × 32.7 × 15.3 ^{*2}
Mass (g)	Approx. 44		

*1 Use recommended thermal papers. *2 Excluding protrusion.

Thermal Printer Mechanism

LTP02 Series



- Max. printing speed: 100mm/sec
- Extremely compact design for mobile terminal
- Light weight only 28g



LTP02-245

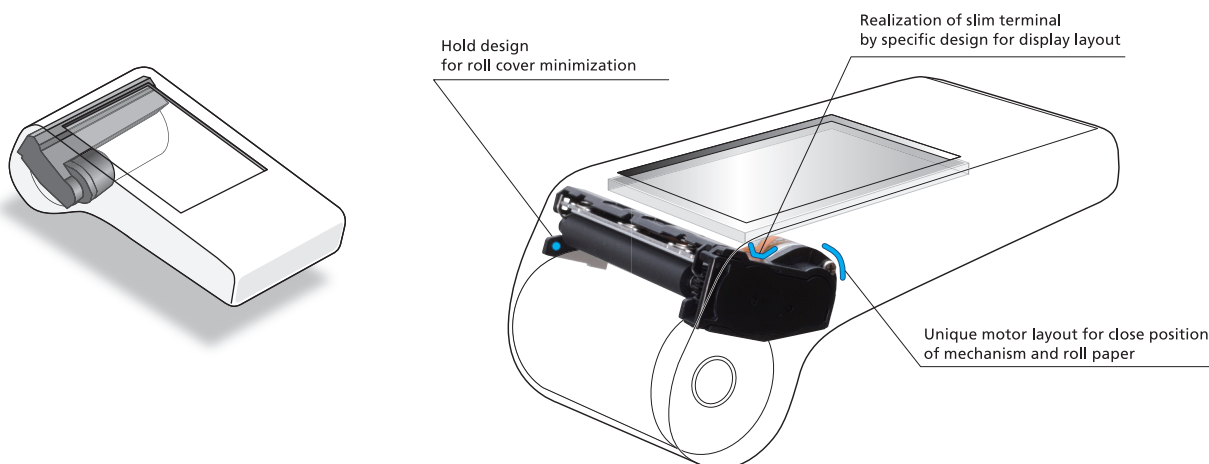
Model	LTP02-245			
	Standard model (LTP02-245-13x)	High speed model (LTP02-245-A3)	Low energy model (LTP02-245-C1)	
Printing	Method	Thermal line dot printing		
	Number of dots/line	384		
	Resolution (dots/mm)	8		
	Paper width (mm)	58 ^{*1}		
	Printing width (mm)	48		
	Speed (mm/sec) max	100	120 (9.0V) 165 (12.0V)	85
	Paper path	Curved		
Detection	Head temperature	By thermistor		
	Out of paper	By photo interrupter		
Power supply (V)	Operation voltage (V _{dd})	3.0 to 3.6		
	Operation voltage (V _p)	5.5 to 9.5	5.5 to 9.5, 10.8 to 12.6	3.0 to 4.2
Peak current (A)	Head	2.64 (9.5V / 45 dots)	3.02 (12.6V / 48 dots)	5.99 (4.2V / 129 dots)
	Motor	0.6	0.6	1.0
Service Life	Pulse activation (pulse)	100 million	50 million	100 million
	Abrasion resistance (km)	50 ^{*2}		
Operating temperature (°C)	-10 to 50			
Dimensions (W×D×H mm)	67.3 × 18.1 × 30.0 ^{*2}			
Mass (g)	Approx. 28			

*1 Use recommended thermal papers. *2 Excluding protrusion.

CPU

Model	PT02-55U	PT02-3U
Thermal printer	LTP02-245-13x	LTP02-245-C1
Package form	48pin LQFP	
Operating voltage (V)	V _p : 5.5 to 9.5 V _{cc} : 3.0 to 3.6	V _p : 3.3 to 4.2 V _{cc} : 3.0 to 3.6
Input frequency (MHz)	16 ± 0.01%	
Configuration	C-MOS LSI	
Communication interface	USB input / output (Device / Printer class / Full speed)	
Character type	ASCII Code	
Dimensions (W×D×H mm)	9.0 × 9.0 × 1.5	

Smart design to contribute reducing terminal size!



Low Voltage

24 Volt

POS Printer

Mobile Printer

Smart Label Printer

Other Models Line up

Panel-Mount Printer Unit

DPU-D Series



Measuring Instrument Barcode Medical Equipment

- Max printing speed: 100mm/sec (DPU-D2)
80mm/sec (DPU-D3)
- Small and compact design
- Panel-mount type
- Easy paper operation



DPU-D2



DPU-D3

Low Voltage

24 Volt

POS Printer

Mobile Printer

Smart Label Printer

Other Models
Line up

Model		DPU-D2-00A	DPU-D3-00A
Printing	Method	Thermal line dot printing	
	Number of dots/line	384	576
	Resolution (dots/mm)	8	
	Paper width (mm)	58 ⁺⁰ ₋₁	80 ⁺⁰ ₋₁
	Printing width (mm)	48	72
	Speed (mm/sec) max	100 (8.5V)	80 (8.5V)
	Character matrix (H×W dots)	24 × 24, 24 × 12, 16 × 16, 16 × 8	
	Character size (H×W mm)	3.0 × 3.0, 3.0 × 1.5, 2.0 × 2.0, 2.0 × 1.0	
	Number of columns	16, 32, 24, 48	24, 48, 36, 72
Character type	Extended graphics character, Katakana character set, CP1252, Optional font, Downloaded character, User-defined character, JIS 1 & 2 level kanji		
Bar code	UPC-A/E, JAN (EAN) 8/13, ITF, CODE39, CODABAR, CODE93, CODE128, PDF417, QR Code, MaxiCode, Data Matrix		
Power supply (V)	Driving voltage (5.0 to 9.0)		
Communication interface	Serial / USB		
Input buffer	4K bytes		
Command	ESC/POS™ conformity		
Cutting	Tear bar		
Operating Temperature (°C)	-10 to 50		
Service life (km)	50 ^{*1}		
Dimensions (W×D×H mm)	80.0 × 68.8 × 85.5 ^{*2}	102.0 × 68.8 × 85.5 ^{*2}	
Mass (g)	Approx. 180	Approx. 210	
Software ^{*3}	Printer Driver/SDK		

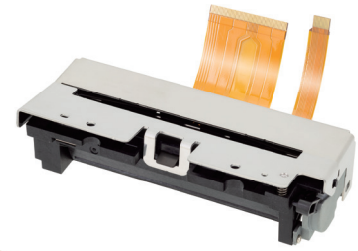
*1 Use recommended thermal papers. *2 Excluding protrusion. *3 Please see official homepage "www.sii-ps.com" for details.

Thermal Printer Mechanism

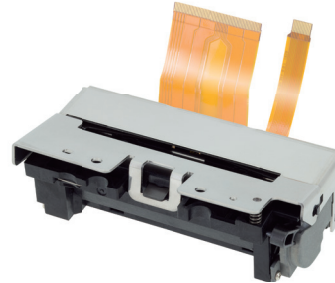
CAP06-247/347



- Build in Auto paper cutter
- Easy paper operation
- Max. printing speed: 250mm/sec
- Resolution: 8 dots/mm



CAP06-347



CAP06-247

Model		CAP06-247	CAP06-347
Printing	Method	Thermal line dot printing	
	Number of dots/line	432	576
	Resolution (dots/mm)	8	
	Paper width (mm)	58 ⁺⁰ ₋₁	58 ⁺⁰ ₋₁ / 80 ⁺⁰ ₋₁
	Printing width (mm)	54	72
	Speed (mm/sec) max	250	
Detection	Paper path	Curved	
	Head temperature	By thermistor	
	Platen position detection	By mechanical switch	
	Out of paper detection	By photo interrupter	
	Cutter home position	By photo interrupter	
Power supply (v)	Operation voltage (Vdd)	3.0 to 3.6	
	Operation voltage (Vp)	21.6 to 26.4	
Peak current (A)	Head	10.3 (26.4 V / 288 dots)	10.2 (26.4 V / 288 dots)
	Motor	1.0	
	Cutter	0.64	
Auto Cutter	Method	Slide type	
	Paper thickness (μm)	48 to 80*1	
	Cutting type	Full cut / Partial cut (Leave center point)	
	Operating time (sec/cycle) max	0.5	
	Cutting pitch (mm) min	10	
Service Life	Cut frequency (cut/min) max	30	
	Pulse activation (pulse)	150 million	
	Abrasion resistance (km)	150	
	Life (cut)	1,500,000	
Operating temperature (°C)		-10 to 50	
Dimensions (W×D×H mm)		87.5 × 43.9 × 27.2*2	106.5 × 43.9 × 27.2*2
Mass (g)		Approx.140	Approx.163

*1 Use recommended thermal papers. *2 Excluding protrusion.

Interface

Model	IF06-7U	IF06-7S
CPU	PT06-57 SU	
Thermal Printer	CAP06-247, CAP06-347	
Operating voltage (V)	Vp: 21.6 to 26.4	
Character matrix (H×W dots)	16 dots characters: 16 × 8, 16 × 16	
	24 dots characters: 24 × 12, 24 × 24	
Character type	Codepage (13 types), Katakana character set, User-defined character, Downloaded character, Optional font, JIS 1st and 2nd level Kanji, Special characters	
	Communication interface	USB (2.0) Serial (RS-232 C)
	Dimensions (W×D×H mm)	69.0 × 50.0 × 14.0
Software*3	Printer Driver/SDK, OPOS Driver, POS for .NET Driver, Linux® CUPS Filter/SDK	

*3 Please see official homepage "www.sii-ps.com" for detail.

CPU

Model	PT06-57SU
Thermal printer	CAP06-247, CAP06-347
Package form	144 pin UFBGA
Operating voltage (V)	Vp: 21.6 to 26.4 Vcc: 3.0 to 3.6
Input frequency (MHz)	12 ± 0.01 %
Configuration	C-MOS / TTL LSI
Communication interface	Serial, USB
Built-in characters	Codepage (13 types), Katakana character set
Additional characters	CG ROM*4
Character matrix (H×W dots)	16 dots characters: 16 × 8, 16 × 16
	24 dots characters: 24 × 12, 24 × 24
Dimensions (W×D×H mm)	10.0 × 10.0 × 0.53
Software*5	Printer Driver/SDK, OPOS Driver, POS for .NET Driver, Linux® CUPS Filter/SDK

*4 CG ROM: Japanese *5 Please see official homepage "www.sii-ps.com" for detail.

Low Voltage

24 Volt

POS Printer

Mobile Printer

Smart Label Printer

Other Models Line up

Thermal Printer Mechanism

LTPD247/347



POS/ECR

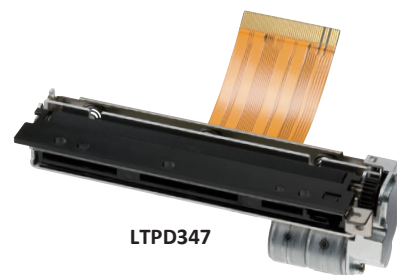
Measuring Instrument

Barcode

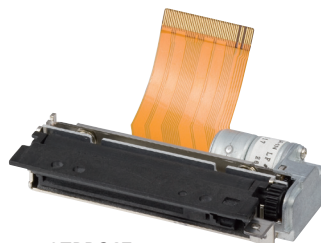
Label

Medical Equipment

- High performance in compact design
- Max. printing speed: 200mm/sec
- Platen latch function
- Label printing *Under specific conditions only.



LTPD347

LTPD247
(Horizontal)

Model		LTPD247	LTPD347
Printing	Method	Thermal line dot printing	
	Number of dots/line	432	576
	Resolution (dots/mm)	8	
	Paper width (mm)	58 ⁺⁰ ₋₁	80 ⁺⁰ ₋₁
	Printing width (mm)	54	72
	Speed (mm/sec) max	200	
	Paper path	Curved	
Detection	Head temperature	By thermistor	
	Platen position	By mechanical switch	
	Out of paper	By photo interrupter	
Power supply (V)	Operation voltage (V _{dd})	2.7 to 3.6 / 4.75 to 5.25	
	Operation voltage (V _p)	21.6 to 26.4	
Peak current (A)	Head	2.61 (26.4V / 144dots) / 5.23 (26.4V / 288dots)	
	Motor	0.44	0.52
Service Life	Pulse activation (pulse)	100 million	
	Abrasion resistance (km)	100 ¹¹	
Operating temperature (°C)	-10 to 50		
Dimensions (W×D×H mm)	Horizontal	71.0 × 30.0 × 15.0 ¹²	91.0 × 30.0 × 15.0 ¹²
	Vertical	71.0 × 15.0 × 30.0 ¹²	91.0 × 15.0 × 30.0 ¹²
Mass (g)	Approx. 56		Approx. 64

*1 Use recommended thermal papers. *2 Excluding protrusion.

Interface

Model	IFD001-01UK	IFD001-01SK
CPU	PTD00P01	
Thermal printer	LTPD247, LTPD347, CAPD247, CAPD347	
Operating voltage (V)	V _p : 21.6 to 26.4	
Character matrix (H×W dots)	16 dots characters: 16 × 8, 16 × 16 24 dots characters: 24 × 12, 24 × 24	
Character type	Extended graphics character set, Katakana character set 1, Katakana character set 2, Codepage 1252, User page, Downloaded character, Optional font, JIS 1st and 2nd level kanji, User-defined character	
Data input method	USB (2.0)	Serial (RS-232C)
Dimensions (W×D×H mm)	69.0 × 50.0 × 14.0	
Software ¹³	Printer Driver/SDK, OPOS Driver, POS for .NET Driver, Linux® CUPS Filter/SDK	

*3 Please see official homepage "www.sii-ps.com" for details.

CPU

Model	PTD00P01
Thermal printer	LTPD247, LTPD347, CAPD247, CAPD347
Package form	120pin QFP
Operating voltage (V)	V _p : 21.6 to 26.4, V _{cc} : 3.0 to 3.6
Operating frequency (MHz)	12MHz ± 0.01%
Configuration	C-MOS LSI
Input method	Parallel, Serial, USB
Character type	Extended graphics character set, Other characters is available with CGs ¹⁴ or external ROM
Character size	16 dots characters: 16 × 8, 16 × 16 24 dots characters: 24 × 12, 24 × 24
Dimensions (W×D×H mm)	16.0 × 16.0 × 1.7
Software ¹⁵	Printer Driver/SDK, OPOS Driver, POS for .NET Driver, Linux® CUPS Filter/SDK

*4 CG ROM: Japanese *5 Please see official homepage "www.sii-ps.com" for details.

Low Voltage

24 Volt

POS Printer

Mobile Printer

Smart Label Printer

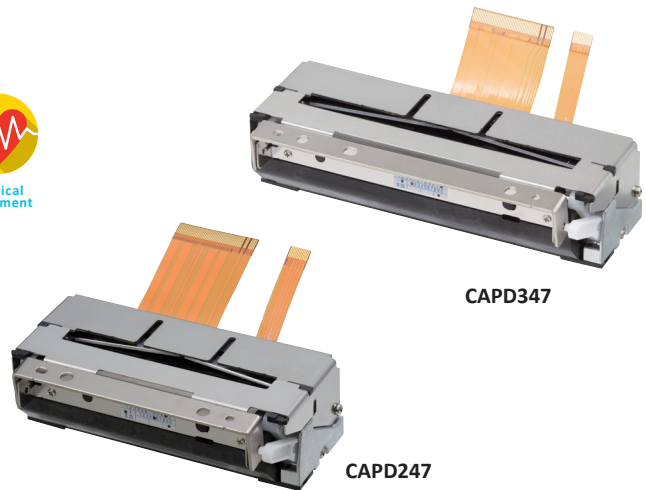
Other Models
Line up

Thermal Printer Mechanism

CAPD247/347



- Built-in auto-cutter
- Jam-free cutter design
- Max. printing speed: 200mm/sec
- Platen latch function



Model		CAPD247	CAPD347
Printing	Method	Thermal line dot printing	
	Number of dots/line	432	576
	Resolution (dots/mm)	8	
	Paper width (mm)	58 ⁺⁰ ₋₁	80 ⁺⁰ ₋₁
	Printing width (mm)	54	72
	Speed (mm/sec) max	200	
Detection	Paper path	Curved	
	Head temperature	By thermistor	
	Platen position	By mechanical switch	
	Out of paper	By photo interrupter	
Power supply (v)	Cutter home position	By photo interrupter	
	Operation voltage (Vdd)	2.7 to 3.6 / 4.75 to 5.25	
Peak current (A)	Operation voltage (Vp)	21.6 to 26.4	
	Head	2.61 (26.4V / 144dots) / 5.23 (26.4V / 288dots)	
	Motor	0.44	0.52
Auto cutter	Cutter	0.64	
	Method	Slide type	
	Paper thickness (μm)	54 to 91 ^{*1}	
	Cutting type	Full cut / Partial cut (Leave center point)	
	Operating time (sec/cycle) max	Approx. 0.5	
	Cutting pitch (mm) min	10	
Service Life	Cut frequency (cut/min) max	30	
	Pulse activation (pulse)	100 million	
	Abrasion resistance (km)	100 ^{*1}	
Operating temperature (°C)	1,000,000 ^{*1}		
Dimensions (W×D×H mm)	-10 to 50		
Mass (g)	83.1 × 35.4 × 26.9 ^{*2}	105.1 × 35.4 × 27.2 ^{*2}	
	Approx. 131		
	Approx. 154		

*1 Use recommended thermal papers. *2 Excluding mounting part.

Interface / CPU ^{*3}

	Model
USB interface board	IFD001-01UK
Serial interface board	IFD001-01SK
CPU	PTD00P01
Software ^{*4}	Printer Driver/SDK, OPOS Driver, POS for .NET Driver, Linux® CUPS Filter/SDK

^{*3} Interface boards and CPU are mutual options with LTPDX47 series.

^{*4} Please see official homepage "www.sii-ps.com" for details.

Low Voltage

24 Volt

POS Printer

Mobile Printer

Smart Label Printer

Other Models Line up

Thermal Printer Mechanism

CAPM Series



POS/ECR

Measuring Instrument

Barcode

KIOSK System

Ticket Printer

Gaming

- Max. printing speed: 300mm/sec
- Build in auto paper cutter
- Head open design for easy paper operation
- Heavy-duty: 200km, 2mil. cuts
- Wide operating temperature: -20°C to 60°



CAPM347

Model	CAPM347			
	Easy paper operation model		Loading model	
	Regular thermal paper		Regular thermal paper	Thick thermal paper
Printing	Method	Thermal line dot printing		
	Number of dots/line	640		
	Resolution (dots/mm)	8		
	Paper width (mm)	58 ⁻⁰ ₋₁ / 60 ⁰ ₋₁ / 80 ⁰ ₋₁ / 83 ⁰ ₋₁		
	Printing width (mm)	54 / 56 / 72 / 80		
	Speed (mm/sec) max	300 ^{*1}	300 ^{*1}	280 ^{*1}
Detection	Head temperature	By thermistor		
	Head position	By mechanical switch		
	Out of paper	By photo interrupter		
	Mark position	By photo interrupter ^{*1}		
	Cutter home position	By photo interrupter		
Power supply (V)	Operation voltage (Vdd)	2.7 to 3.6 / 4.75 to 5.25		
	Operation voltage (Vp)	21.6 to 26.4		
Peak current (A)	Head / Motor / Cutter	5.6 (26.4V / 144dots) / 1.2 / 1.1		
Auto Cutter	Method	Slide type		
	Paper thickness (μm) ^{*1}	54 to 90 ^{*2}	54 to 90 ^{*2}	100 to 150 ^{*2}
	Cutting type	Full cut / Partial cut (Leave center point)		
Service Life	Pulse activation (pulse)	200 million	200 million	100 million
	Abrasion resistance (km)	200 ^{*2}	200 ^{*2}	100 ^{*2}
	Paper cutting (cut)	2,000,000 ^{*2}	2,000,000 ^{*2}	1,000,000 ^{*2}
Operating temperature (°C)	-20 to 60 ^{*1}			
Dimensions (W×D×H mm)	110.0 × 61.0 × 53.4		110.0 × 61.0 × 55.9	
Mass (g)	Approx. 500			

*1 Under specified condition. *2 Use recommended thermal papers.

Interface

Model	IFM201-01UK
CPU	PTM20P01
Thermal printer	CAPM347
Operating voltage (v)	Vp: 21.6 to 26.4
Character matrix (H×W dots)	16 dots characters: 16 × 8, 16 × 16 24 dots characters: 24 × 12, 24 × 24
Character type	Extended graphics character set, Katakana character set, Codepage (437, 850, 852, 858 and 1252), User-defined character, Downloaded character, Optional font, JIS 1st and 2nd level Kanji, Special characters
Communication interface	USB (2.0)
Dimensions (W×D×H mm)	60.0 × 80.0 × 14.0
Software ^{*3}	Printer Driver/SDK, OPOS Driver, POS for .NET Driver, Linux® CUPS Filter/SDK

*3 Please see official homepage "www.sii-ps.com" for details.

CPU

Model	PTM20P01
Thermal printer	CAPM347
Package form	144pin QFP
Operating voltage (v)	Vp: 21.6 to 26.4, Vdd: 3.0 to 3.6
Input frequency (MHz)	12 ± 0.01%
Configuration	C-MOS LSI
Communication interface	Parallel, Serial, USB
Character type	Extended graphics character set, Other characters is available with CGs ^{*4} or external ROM
Character matrix (H×W dots)	16 dots characters: 16 × 8, 16 × 16 24 dots characters: 24 × 12, 24 × 24
Dimensions (W×D×H mm)	22.0 × 22.0 × 1.7
Software ^{*5}	Printer Driver/SDK, OPOS Driver, POS for .NET Driver, Linux® CUPS Filter/SDK

*4 CG ROM: Japanese *5 Please see official homepage "www.sii-ps.com" for details.

Low Voltage

24 Volt

POS Printer

Mobile Printer

Smart Label Printer

Other Models Line up

Easy Paper Operation Model



Loading Model



Thermal Printer Mechanism

LTP04



POS/ECR



EFT-POS



Measuring Instrument



Mobile Printer



Medical Equipment

- Max. printing speed: 250mm/sec
- Heavy-duty: 150km, 2mil. cuts
- Easy maintenance
: Major parts are replaceable without tools



LTP04 / ACU04
(Platen released)



LTP04 / ACU04

Model		LTP04-347
Printing	Method	Thermal line dot printing
	Number of dots/line	576
	Resolution (dots/mm)	8
	Paper width (mm)	80 ⁺⁰ ₋₁
	Printing width (mm)	72
	Speed (mm/sec) max	250
Detection	Head temperature	By thermistor
	Platen position	By mechanical switch
	Out of paper	By photo interrupter
Power supply (V)	Operation voltage (Vdd)	3.0 to 3.6
	Operation voltage (Vp)	21.6 to 26.4
Peak current (A)	Head	16.7 (26.4V / 384 dots)
	Motor	1.0
Service Life	Pulse activation (pulse)	150 million ^{*1}
	Abrasion resistance (km)	150 ^{*1}
Operating temperature (°C)		0 to 50
Dimensions (W×D×H mm)		127.6 × 83.0 × 44.1 (55.95 with auto cutter) ^{*2}
Mass (g)		Approx. 400

^{*1} Use recommended thermal papers. ^{*2} Excluding protrusion

Auto cutter

Model		ACU04-37
Thermal printer		LTP04-347
Cutting	Method	Slide type
	Paper width (mm)	80 ⁺⁰ ₋₁
	Paper thickness (μm)	60 to 80 ^{*3}
	Cutting type	Partial cut (Leave center point)
	Operating time (sec/cycle) max	0.4 (24V)
	Cutting pitch (mm) min	10
	Cut frequency (cut/min) max	30
Operating voltage (V)	Motor	21.6 to 26.4
	Detector (control switch)	3.0 to 5.0
Starting current (A)		1.3
Life (Cut)		2,000,000 ^{*4}
Dimensions (W×D×H mm)		95.6 × 39.0 × 16.2
Mass (g)		Approx. 100

^{*3} Use recommended thermal papers ^{*4} Depending upon specified conditions.

Low Voltage

24 Volt

POS Printer

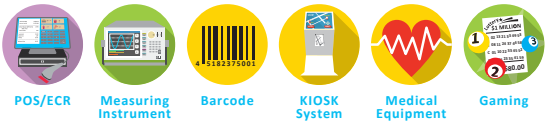
Mobile Printer

Smart Label Printer

Other Models
Line up

POS Printer

RP-E10 Series



RP-E10



- **RP-E10: Paper top-exit**
- **RP-E11: Paper front-exit (IPx1)**
- **Compact cube: 129mm × 129mm × 129mm**
- **Max printing speed: 350mm/sec**
- **High Reliability: 150km, 2 million cuts**
- **Wide variety of driver and utility software suite**
- **Large LED indicator (Multi-color)**

Low Voltage

24 Volt

POS Printer

Mobile Printer

Smart Label Printer

Other Models Line up

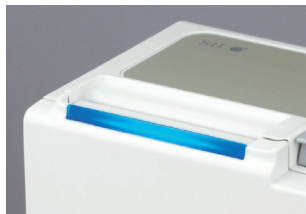
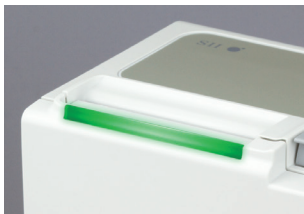
Model	RP-E10 (Receipt top-exit)	RP-E11 (Receipt front-exit)
Method	Thermal line dot printing	
Number of dots/line	576	
Resolution (dots/mm)	203 (8 dots / mm)	
Paper width (mm)	58 ⁺⁰ ₋₁ / 80 ⁺⁰ ₋₁	
Printing width (mm)	54 / 72	
Speed (mm/sec) max	350	
Outside diameter of paper roll (mm) max	φ 83	
Inside diameter of paper roll (mm)	φ 12	
Character matrix (H×W dots)	24 × 12, 24 × 24, 16 × 8, 16 × 16	
Character dimensions (H×W mm)	3.0 × 1.5, 3.0 × 3.0, 2.0 × 1.0, 2.0 × 2.0	
Type of Paper	Roll paper, Timing mark roll paper (Built-in timing mark sensor)	
Character type	Codepage (14 pages), Katakana character set, User-defined character, Downloaded character, Optional font, JIS 1st and 2nd level Kanji, Special characters	
Bar code	UPC-A/E, JAN (EAN) 8/13, ITF, CODABAR, CODE39, CODE93, CODE128, QR Code, PDF417, GS1 Databar, MaxiCode, Data Matrix	
Power supply (V)	Specified AC adapter, External power (DC24V ± 5%)	
Communication interface	USB, Serial, Powered USB, Ethernet	
Input buffer	16K bytes	
Command	ESC/POS™ conformity, Markup Language	
Cutting	Methods	Slide type
	Cutting type	Full cut / Partial cut (Leave center point)
Operating temperature (°C)	5 to 45	
Service life	Abrasion resistance (km)	150 ^{*1}
	Paper cutting (cut)	2,000,000 ^{*1}
Dimensions (W×D×H mm)	129.0 × 129.0 × 129.0 ^{*2}	
Mass (g)	Approx. 1300	
Standard	FCC, CE, VCCI, etc.	
Options	Wall mounting kit, Back plate	
Cash drawer	2 drivers (24V / 1A)	
Body color	2 colors: White / Black	
Software ^{*3}	Printer Driver/SDK, OPOS Driver, POS for .NET Driver, JavaPOS™, Android™ SDK, iOS SDK, Linux® CUPS Filter/SDK, Xamarin SDK, URL Print Agent	

*1 Use recommended thermal papers. *2 Excluding protrusion. *3 Please see official homepage "www.sii-ps.com" for details.

RP-E10 DISPLAY

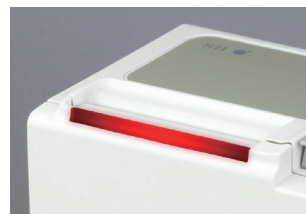
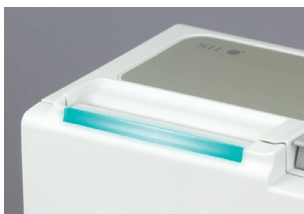
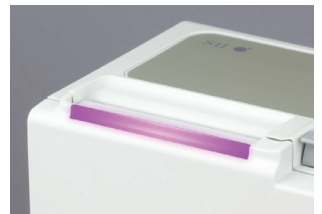
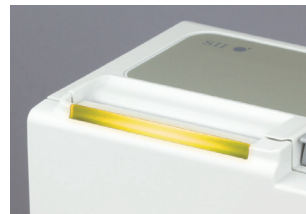
Stand-by mode

Selectable color options include green, blue, aqua, and off (for lower power consumption).



Error status

Error notifications are displayed in yellow, purple, and red, using various flashing patterns. An optional buzzer sound is also available with variable settings to enhance error notifications.



POS Printer

RP-D10 Series



- Dual purpose: Paper top-exit and front-exit (IPx1)
- Compact cube: 129mm × 129mm × 129mm
- Max printing speed: 200mm/sec
- Energy saving: ENERGY STAR® compliant
- Paper saving: Receipt top space = 2mm (min.)
- Wide variety of driver and utility software suite

Made for
 iPhone | iPad | iPod

Model		RP-D10
Printing	Method	Thermal line dot printing
	Number of dots/line	576
	Resolution (dots/mm)	203 (8 dots / mm)
	Paper width (mm)	58 ⁺⁰ / 80 ⁺⁰ ₋₁
	Printing width (mm)	54 / 72
	Speed (mm/sec) max	200
	Outside diameter of paper roll (mm) max	φ 83
	Inside diameter of paper roll (mm)	φ 12
	Character matrix (H×W dots)	24 × 12, 24 × 24, 16 × 8, 16 × 16
	Character dimensions (H×W mm)	3.0 × 1.5, 3.0 × 3.0, 2.0 × 1.0, 2.0 × 2.0
Type of Paper	Roll paper	
Character type	Codepage (14 pages), Katakana character set, User-defined character, Downloaded character, Optional font, JIS 1st and 2nd level Kanji, Special characters	
Bar code	UPC-A/E, JAN (EAN) 8/13, ITF, CODABAR, CODE39, CODE93, CODE128, QR Code, PDF417, MaxiCode, Data Matrix	
Power supply (V)	Specified AC adapter, External power (DC24V ± 5%)	
Communication interface	USB, Serial, Powered USB, Ethernet, Bluetooth®	
Input buffer	4K bytes	
Command	ESC/POS™ conformity, Markup Language	
Cutting	Methods	Slide type
	Cutting type	Full cut, Partial cut (Leave center point)
Operating temperature (°C)		5 to 45
Service life	Abrasion resistance (km)	100**1
	Paper cutting (cut)	1,500,000**2
Dimensions (W×D×H mm)		129.0 × 129.0 × 129.0**3
Mass (g)		Approx. 850
Standard		FCC, CE, VCCI, etc.
Options		Wall mounting kit, Back plate
Cash drawer		2 drivers (24V / 1A)
Body color		2 colors: White / Black
Software**4		Printer Driver/SDK, OPOS Driver, POS for .NET Driver, JavaPOS™, Android™ SDK, iOS SDK, Linux® CUPS Filter/SDK, Xamarin SDK

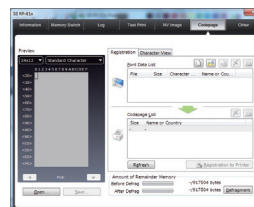
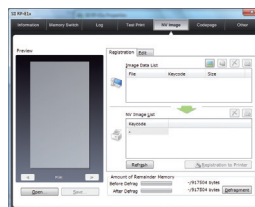
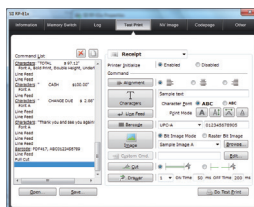
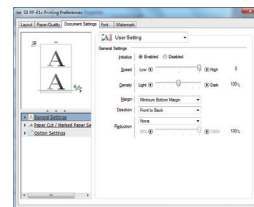
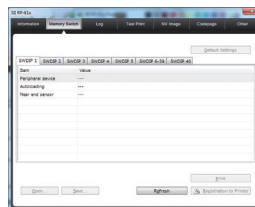
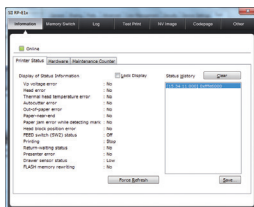
*1 Use recommended thermal papers. *2 Vary according to thermal paper. *3 Excluding protrusion. *4 Please see official homepage "www.sii-ps.com" for details.

RP-E10 / RP-D10 SOFTWARE TOOLS

Convenient software tools available for assisting application development.

Utility soft (Build on the Printer driver)

Memory SW setting, LOG management, USB serial ID setting, NV image registration, Code page registration



POS Printer

RP-F10 Series



POS/ECR Measuring Instrument Barcode KIOSK System Medical Equipment Gaming



RP-F10



- 2-way: Paper top-exit and front-exit (IPx1)
- Compact cube: 127mm × 127mm × 127mm
- Max printing speed: 250mm/sec
- Optional 4.3 inch color LCD can be mounted on RP-F10
- Easy pairing with a Bluetooth terminal via NFC (Bluetooth Model)
- Cutter lock automatic restoration mechanism
- Various drivers and wide variety utility software

Made for
 iPhone | iPad | iPod

Model		RP-F10
Printing	Method	Thermal line dot printing
	Resolution (dpi)	203 (8 dots / mm)
	Paper width (mm)	58 ⁺⁰ / 80 ⁺⁰ ₋₁ / 80 ⁺⁰ ₋₁
	Printing width (mm)	54 / 72
	Speed (mm/sec) max	250
	Outside diameter of paper roll (mm) max	φ83
	Character matrix (H×W dots)	24 × 12, 24 × 24, 16 × 8, 16 × 16
	Character size (H×W mm)	3.0 × 1.5, 3.0 × 3.0, 2.0 × 1.0, 2.0 × 2.0
Type of paper	Roll paper	
Character type	Codepage (14 pages), Katakana character set, User-defined character, Downloaded character, Optional font, JIS 1st and 2nd level Kanji, Special characters	
Bar code	UPC-A/E, JAN(EAN)8 / 13, ITF, CODABAR, Code39, Code93, Code128, QR, PDF417, MaxiCode, Data Matrix, GS1 Databar	
Power supply	Specified AC adapter, External power (DC24 ± 10 %)	
Communication interface	USB+USB-host, Ethernet+USB-host, Bluetooth (NFC)+USB-host, Bluetooth(NFC)+USB Type-C/PD+USB host	
Input buffer	4K bytes	
Command	ESC/POS™ conformity	
Cutting	Method	Slide type
	Cutting type	Full cut / Partial cut (Leave center point)
Operating Temperature (°C)	5 to 45	
Service life	Abrasion resistance (km)	150 ^{*1}
	Paper cutting (cut)	1,500,000 ^{*1}
Dimensions (W×D×H mm)	127.0 × 127.0 × 127.0 ^{*2}	
Mass (g)	Approx. 840	
Standard	FCC, CE, VCCI	
Options	Wall mounting Kit, Buzzer, LCD (4.3 inch color)	
Cash drawer	2 drivers (24 V / 1 A)	
Body color	2 colors: White / Black	
Software ^{*3}	Printer Driver/SDK, OPOS Driver, POS for .NET Driver, Android™ SDK, iOS SDK, Linux® CUPS Filter/SDK, Xamarin SDK, URL Print Agent	

*1 Use recommended thermal papers. *2 Excluding protrusion
 *3 Please see official homepage "www.sii-ps.com" for details.

Low Voltage

24 Volt

POS Printer

Mobile Printer

Smart Label Printer

Other Models
Line up

POS Printer (Option)

DISPLAY



- **4.3inch color LCD (W480 × H272 pixels)**
- **Various installation methods:**
Mounted on printer (RP-F10), Stand-alone, Fixing screw (wall mount)
- **Various display contents:**
Character, Barcode (1D Barcode / QR code) Image (JPEG, PNG)
- **Various applications:**
Customer display, QR payment, Advertisement
- **Printer error and its recovery method are displayed (Connect with RP-F10)**
- **Various drivers and wide variety utility software**



DSP-A01 (Horizontal)

DSP-A01 (Vertical)

Model		DSP - A01
LCD	Panel Size	4.3 inch
	Method	TFT LCD
	Color	16 Bit Color
	Number of Pixels (pixel)	480 (W) × 272 (H)
	Active Area (mm)	95.04 (W) × 53.856 (H)
	Pixel Pitch (mm)	0.198 (W) × 0.198 (H)
	Luminance (cd/m ²)	300
Contents		Character, Barcode, Image
Character	Character matrix (H×W pixel)	24 × 12, 24 × 24, 16 × 8, 16 × 16
	Character size (H×W mm)	4.752 × 2.376, 4.752 × 4.752, 3.168 × 1.584, 3.168 × 3.168
	Number of characters	ANK: 320 characters (40 characters × 8 lines) Kanji: 160 characters (20 characters × 8 lines)
	Character type	Codepage (18 Pages), Katakana character set, User-defined character, Optional font (max. 255 × 255 pixel), JIS 1 & 2 Level Kanji, Special characters
	Character decoration	Vertical double (×2, ×4), Horizontal double (×2, ×4), Bold, Underlin
Barcode	1D	UPC-A/E, JAN (EAN) 8 /13 , ITF, CODABAR, Code39 , Code128
	2D	QR code (Version 1 to 22 , Cell size 1 to 16 pixel)
Image		JPEG, PNG
Power supply		DC 4.75 V to 5.25 V (Activated with USB bus power)
Communication interface		USB 2.0 Full speed, micro B connector
Operating Temperature (°C)		5 to 45
Service life		30,000 hours
Dimensions (W×D×H mm)		Approx. 120 × 25 × 120 ^{*1}
Mass (g)		Approx. 265
Standard		FCC, CE, VCCI
Display tilt angle		0 to 150°
Installation method		Mounted on printer (RP-F10), Stand-alone, Fixing screw (wall mount)
Software ^{*2}		Printer Driver/SDK, OPOS Driver, POS for .NET Driver, Android™ SDK, iOS SDK, Xamarin SDK

^{*1} Excluding protrusion.
^{*2} Please see official homepage "www.sii-ps.com" for details.

Low Voltage

24 Volt

POS Printer

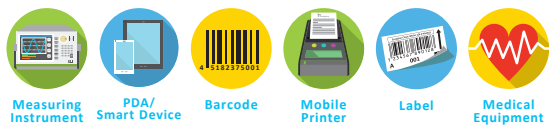
Mobile Printer

Smart Label Printer

Other Models Line up

Mobile Printer

MP-A40 Series



MP-A40



● High Reliability

- Drop rating: 2.0m (6.6feet) multiple
- IP rating: IP54
- Operating temperature: -20°C to 50°C

● Wide variety of driver and SDK for mobile equipment

● Simple operation

● Stylish design

● Various drivers and wide variety utility software

Made for

iPhone | iPad | iPod

Model	MP-A40
Method	Thermal line dot printing
Number of dots/line	832
Resolution (dots/mm)	8
Paper width (mm)	80 ⁺⁰ ₋₁ / 100 ⁺⁰ ₋₁ / 105 ⁺⁰ ₋₁ / 112 ⁺⁰ ₋₁
Printing width (mm)	104
Speed (mm/sec) max	105
Outside diameter of paper roll (mm) max	φ58
Character matrix (H×W dots)	24 × 12, 24 × 24, 16 × 8, 16 × 16
Character dimensions (H×W mm)	3.0 × 1.5, 3.0 × 3.0, 2.0 × 1.0, 2.0 × 2.0
Type of Paper	Roll paper, Label roll paper
Character type	Codepage (17 pages), Katakana character set, User-defined character, Downloaded character, Optional font, JIS 1st and 2nd level Kanji, Special characters
Bar code	UPC-A/E, JAN(EAN)8/13, ITF, CODE39, CODABAR, CODE93, CODE128, PDF417, QR Code, MaxiCode, Data Matrix, GS1 Databar
Power supply (v)	Option: Specified AC adapter, Li-ion battery
Communication interface	USB, Bluetooth®
Input buffer	4K bytes
Command	ESC/POS™ conformity, CPCL conformity, HTML command
Cutting	Tear bar
Drop rating	2.0m (6.6feet) multiple ^{*1}
IP rating	IP54 ^{*1}
Operating temperature (°c)	-20 to 50
Service life (km)	50 ^{*2}
Dimensions (W×D×H mm)	156 × 152 × 71 ^{*3}
Mass (g)	Approx. 760 ^{*4}
Standard	FCC, CE, VCCI
Bundled items	Belt clip, Partition plate
Options	AC adapter, Battery pack, Battery charger (single/quad), AC cable, USB cable, Serial cable, Car charger, Strap, Carrying case
Software ^{*5}	Printer Driver/SDK, Windows® CE SDK, Android™ SDK, iOS SDK, URL Print Agent

*1 Test performance by specified condition. *2 Use recommended thermal papers. *3 Excluding protrusion

*4 Including battery, excluding roll paper *5 Please see official homepage "www.sii-ps.com" for details.

Low Voltage

24 Volt

POS Printer

Mobile Printer

Smart Label Printer

Other Models
Line up

Mobile Printer

MP-B30/B30L



Measuring Instrument



PDA/Smart Device



Barcode



Mobile Printer



Medical Equipment

- Compact & Light Weight
- Drop rating: 1.8m (6feet)
IP rating: IP54
- Printing Speed: 130mm/sec max (MP-B30L)
- Simple Operation & Stylish Design
- Option Cradle for Charging
- Various drivers and wide variety utility software



MP-B30/B30L



Made for
 iPhone | iPad | iPod

Model	MP-B30	MP-B30L
Method	Thermal line dot printing	
Number of dots/line	576	
Resolution (dots/mm)	8	
Paper width (mm)	80 ⁺⁰ ₋₁	80 ⁺⁰ ₋₁ / 76.2 ⁺⁰⁺¹ ₋₁ / 58 ⁺⁰ ₋₁ ⁺¹
Printing width (mm)	72	
Printing speed (mm/sec) max	127 (5inch)	
Outside diameter of paper roll (mm)max	φ51	
Character matrix (H×W dots)	24 × 12, 24 × 24, 16 × 8, 16 × 16	
Character dimensions (H×W mm)	3.0 × 1.5, 3.0 × 3.0, 2.0 × 1.0, 2.0 × 2.0	
Type of paper	Roll paper	Roll paper, Label roll paper
Character type	Codepage (17 pages), Katakana character set, User-defined character, Downloaded character, Optional font, JIS 1st and 2nd level Kanji, Special characters	
Barcode	UPC-A/E, JAN (EAN)8 /13, ITF, CODE39, CODABAR, CODE93, CODE128, PDF417, QR Code, MaxiCode, Data Matrix, GS1 Databar, AZTEC ^{*7}	
Power supply	Li-ion Battery	
Communication interface	USB, Bluetooth®, W-LAN ^{*2}	
Input buffer	4K bytes	
Command	ESC/POS™ conformity, CPCL conformity ^{*7} , ZPL™ conformity ^{*7}	
Cutting method	Tear bar	
Falling resistance	1.8 m ^{*3}	
IP rating	IP54 ^{*3}	
Operating Temperature (°C)	-20 to 55	
Service life: Abrasion resistance (km)	50 ^{*4}	
Dimensions (W×D×H mm)	105 × 126 × 58 ^{*5}	
Mass (g)	395 ^{*5}	
Standard	FCC, CE, VCCI	
Bundled items	AC adapter, Battery, USB cable, Belt clip	
Options	Cradle for charging, Single battery charger, Quad battery charger, Car charger, Strap/Attachment, Carrying case, Partition plate ^{*7} , Sample roll paper	
Software ^{*9}	Printer Driver/SDK, OPOS Driver, POS for .NET Driver, Windows® CE SDK ^{*8} , Android™ SDK, iOS SDK, Xamarin SDK, URL Print Agent	

^{*1} with Partition plate (option) ^{*2} Selected model. ^{*3} This number is test result based on SII procedures, not guaranteed value. ^{*4} Use recommended thermal papers. ^{*5} Excluding protrusion ^{*6} with battery, without paper roll ^{*7} MP-B30L only ^{*8} MP-B30 only ^{*9} Please see official homepage "www.sii-ps.com" for details.

Low Voltage

24 Volt

POS Printer

Mobile Printer

Smart Label Printer

Other Models Line up

Mobile Printer

MP-B20



Measuring Instrument



PDA/Smart Device



Barcode



Mobile Printer



Medical Equipment

- Compact & Light Weight
- Max printing speed: 80mm/sec
- Simple Operation & Stylish Design
- Charging battery by USB (No AC adapter required)
- Cradle option
- Various drivers and wide variety utility software



MP-B20



Made for
 iPhone | iPad | iPod

Model	MP-B20
Method	Thermal line dot printing
Number of dots/line	384
Resolution (dots/mm)	8
Paper width (mm)	58 ⁺⁰ ₋₁
Printing	
Printing width (mm)	48
Speed (mm/sec) max	80
Outside diameter of paper roll (mm) max	φ40
Character matrix (H×W dots)	24 × 12, 24 × 24, 16 × 8, 16 × 16
Character dimensions (H×W mm)	3.0 × 1.5, 3.0 × 3.0, 2.0 × 1.0, 2.0 × 2.0
Type of Paper	Roll paper
Character type	Codepage (17 pages), Katakana character set, User-defined character, Downloaded character, Optional font, JIS 1st and 2nd level Kanji, Special characters
Bar code	UPC-A/E, JAN(EAN)8/13, ITF, CODE39, CODABAR, CODE93, CODE128 PDF417, QR Code, MaxiCode, Data Matrix, GS1 Databar
Power supply (v)	Li-ion battery
Communication interface	USB, Bluetooth®
Input buffer	4K bytes
Command	ESC/POS™ conformity
Cutting	Tear bar
Falling resistance	1.5m ⁻¹
Operating temperature (°c)	-10 to 50
Service life (km)	50 ^{*2}
Dimensions (W×D×H mm)	79.0 × 110.0 × 44.0 ^{*3}
Mass (g)	Approx. 180 ^{*4}
Standard	FCC, CE, VCCI
Bundled items	USB cable, Battery, Belt clip, Sample roll paper
Option	Cradle for charging
Software ^{*5}	Printer Driver/SDK, Windows® CE SDK, Android™ SDK, iOS SDK

*1 This number is test result based on SII procedures, not guaranteed value. *2 using specified thermal paper *3 Excluding protrusion *4 with battery, without paper roll *5 Please see official homepage "www.sii-ps.com" for details.



Cradle option

Low Voltage

24 Volt

POS Printer

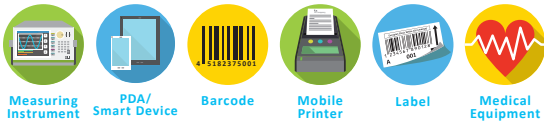
Mobile Printer

Smart Label Printer

Other Models
Line up

Mobile Printer

DPU-S Series



- Max printing speed: 100mm/sec (DPU-S245)
90mm/sec (DPU-S445)
- Interface: Bluetooth®, USB, Serial
- Compact and light-weight
- Easy paper operation
- Wide variety of driver and utility software suite



Made for
 iPhone | iPad | iPod

Model	DPU-S245	DPU-S445
Method	Thermal line dot printing	
Number of dots/line	384	832
Resolution (dots/mm)	8	
Paper width (mm)	58 ⁺⁰ ₋₁	112 ⁺⁰ ₋₁
Printing width (mm)	48	104
Speed (mm/sec) max	100	90
Outside diameter of paper roll (mm) max	φ38	φ50
Character matrix (H×W dots)	24 × 12, 24 × 24, 16 × 8, 16 × 16	
Character dimensions (H×W mm)	3.0 × 1.5, 3.0 × 3.0, 2.0 × 1.0, 2.0 × 2.0	
Number of columns	24, 12, 32, 16	52, 26, 69, 34
Type of Paper	Roll paper, Label roll paper	Roll paper, Label roll paper, Cut sheet paper
Character type	Extended graphics character set, Katakana character set, CP1252, Optional font, Downloaded character, User-defined character, JIS 1 & 2 level kanji	
Bar code	UPC-A/E, JAN (EAN) 8/13, ITF, CODE39, CODABAR, CODE128, PDF417, QR Code, MaxiCode, Data Matrix	
Power supply (V)	Li-ion battery, Specified AC adapter	
Communication interface	Bluetooth®*1, USB, Serial	
Input buffer	4K bytes	
Command	ESC/P™ conformity	
Cutting	Tear bar	
Operating temperature (°c)	-10 to 50	0 to 50
Service life (km)	50 ^{*2}	
Dimensions (W×D×H mm)	83 × 130 × 45 ^{*3}	145.0 × 135.0 × 58.0 ^{*3}
Mass (g)	Approx. 280 ^{*4}	Approx. 490 ^{*4}
Standard	FCC, CE, VCCI	
Options	AC adapter, Battery pack, Battery charger, AC cable, USB cable, Serial cable, Carrying case	
Software ⁵	Printer Driver/SDK, Windows® CE SDK, Android™ SDK, iOS SDK	

*1 Only Bluetooth® model. *2 Use recommended thermal papers. *3 Excluding protrusion. *4 Including battery, excluding roll paper. *5 Please see official homepage "www.sii-ps.com" for details.

Easy paper operation



Cut sheet paper



Low Voltage

24 Volt

POS Printer

Mobile Printer

Smart Label Printer

Other Models Line up

Smart Label Printer

SLP720RT



POS/ECR



Measuring Instrument



Barcode



KIOSK System



Label



Medical Equipment



SLP720RT

- Compatible with Restick Liner-free Label, Receipt paper, Label paper with Liner
- Outside diameter of paper roll : (max.) Φ 102mm
- Printing speed : 200mm/sec(max)
- Compact : (W)90mm \times (D)200mm \times (H)141mm
- Cutter lock : Automatic restoration
- Paper-saving : Top margin saving (min. 4mm) & reduction of line spacing for efficient print layout
- Label taken sensor :
Waits the next print job until a label is taken, prevents labels from sticking to each other
- Label editor available (for Windows, iOS/iPadOS, Android)
- Various drivers and wide variety utility software

Model		SLP720 RT
Printing	Method	Thermal line dot printing
	Number of dots/line	203
	Paper width (mm)	Restick liner-free label, Receipt paper : 40 , 58 / Label (Liner width) : 31 to 58
	Printing width (mm)	Restick liner-free label, Receipt paper : 36, 54
	Speed (mm/sec) max	200
	Outside diameter of paper roll (mm) max	ϕ 102
	Character matrix (H \times W mm)	24 \times 12, 24 \times 24, 16 \times 8, 16 \times 16
	Character dimensions (H \times W mm)	3.0 \times 1.5, 3.0 \times 3.0, 2.0 \times 1.0, 2.0 \times 2.0
Character type		Code page (18Pages), International character, Optional font, Downloaded character, JIS 1&2 Level Kanji, Special character, User-defined character
Bar code		UPC-A/E, JAN (EAN) 8/13, ITF, CODABAR, Code39, Code93, Code128, QR code, PDF417, Maxi code, Data matrix, GS1 Databar
Power supply		Specified AC adapter, External power (DC24 \pm 10%)
Communication interface		USB, Ethernet+USB, Wireless LAN
Command		ESC/POS™(Standard mode) conformity
Cutting	Cutting method	Slide type
	Cutting type	Full cut, Partial cut (Leave center point)
Operating Temperature (°C)		5 to 45
Service life	Paper cutting (cut)	Restick liner-free label, Receipt paper : 1,000,000 ^{*1} / Liner label : 300,000
Dimensions (W \times D \times H mm)		90 \times 200 \times 141 ^{*2}
Mass (g)		Approx. 1100
Standard		FCC, CE, UKCA, VCCI
Software ^{*3}		Windows® : Printer Driver/ SDK / Smart Label Creator / OPOS Driver / POS for .Net Driver/ Utility Android™ : SDK / Xamarin SDK / URL Print Agent / Smart Label Creator / Layout Editor / Utility iOS : SDK / Xamarin SDK / URL Print Agent / Smart Label Creator / Layout Editor / Utility

*1 Use recommended thermal papers. *2 Excluding protrusion *3 Please see official homepage "www.sii-ps.com" for details.

Low Voltage

24 Volt

POS Printer

Mobile Printer

Smart Label Printer

Other Models
Line up

Thermal Printer Mechanism

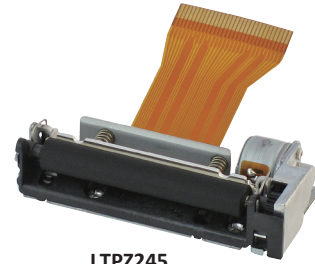
LTPZ Series Low Voltage



- Max. printing speed: 75mm/sec
- Compact and light-weight
- Operating temperature: -20°C to 50°C



LTPZ245
(Vertical)



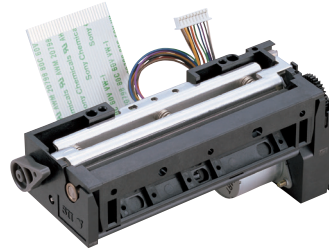
LTPZ245
(Horizontal)

Thermal Printer Mechanism

LTPV Series Low Voltage



- Max printing speed: 85mm/sec
- Platen latch function
- Label printing
- Support thick paper: up to 135µm



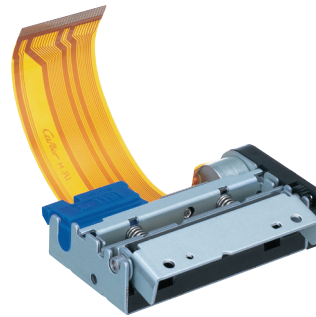
LTPV345

Thermal Printer Mechanism

LTPC Series Low Voltage



- Max printing speed: 65mm/sec
- Easy paper operation
- Lineup of head resolution: 6 dots/mm and 8 dots/mm



LTPC245

Thermal Printer Mechanism

LTPH245 Low Voltage



- Max printing speed: 62.5mm/sec
- Easy paper operation
- Platen latch function
- Operating temperature: -30°C to 70°C



LTPH245

Thermal Printer Mechanism

LTP1245 Low Voltage



- Max printing speed: 62.5mm/sec
- Compact and light-weight
- Paper feed knob model available
- Straight and curved path models available
- Operating temperature: -30°C to 70°C



LTP1245

Low Voltage

24 Volt

POS Printer

Mobile Printer

Smart Label Printer

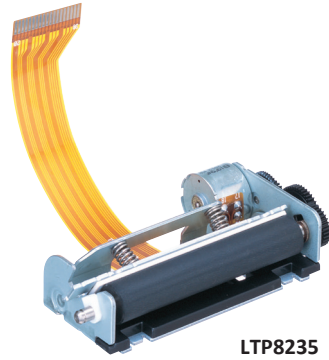
Other Models Line up

Thermal Printer Mechanism

LTP8235 Low Voltage



- Max printing speed: 60mm/sec
- Compact and light-weight
- Resolution: 6 dots/mm
- Loading type



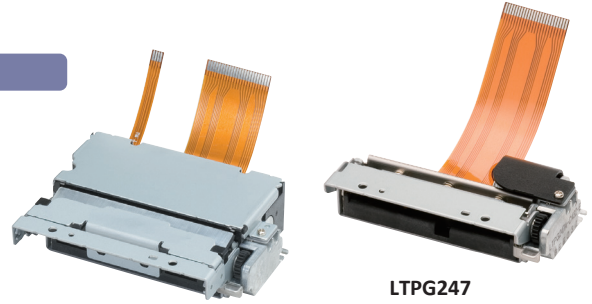
LTP8235

Thermal Printer Mechanism

CAPG247/ LTPG247 24V



- Max printing speed: 150mm/sec
- Platen latch function



CAPG247
(With auto cutter model)

LTPG247

Thermal Printer Mechanism

LTP2000 Series 24V



- Max printing speed (LTP2242): 90mm/sec
- Straight and curved path models available
- Label printing
- Support thick paper: up to 135μm (Straight path model only)



LTP2242

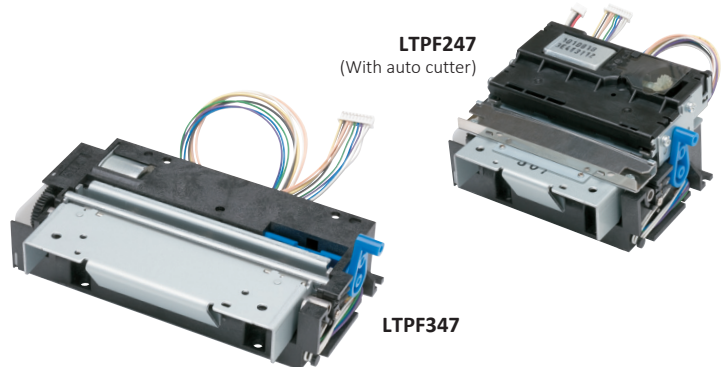
LTP2342

Thermal Printer Mechanism

LTPF Series 24V



- Max printing speed: 220mm/sec
- Platen latch function
- Auto cutter option (Slide type) available



LTPF247
(With auto cutter)

LTPF347

Low Voltage

24 Volt

POS Printer

Mobile Printer

Smart Label Printer

Other Models Line up

Recommended thermal paper

Seiko Instruments Inc. recommends the following paper to best print.

Printer	Thermal paper	Specification					
		Paper width (mm)	External diameter (mm)	Internal diameter (mm)	Length (m)	Roll/Box	Core
MP-B20	TP-211A-L1	58	40	9	(20)	10	-
MP-B30/MP-B30L	TP-311A-L1	80	50	9	(32)	10	-
MP-A40	TP-411A-L1	112	58	9	(45)	10	-
DPU-S245	TP-S245L-1	58	38	9	(19)	10	-
DPU-S445	TP-341L-1	112	48	9	(28)	10	-
RP-F10, RP-E10, RP-D10, RP-B10	TP-E23C-1	58	80	12	(65)	10	✓
	TP-B10CH	80	80	12	(65)	10	✓
CAPD245, LTPD245, LTPU245 LTPJ245, LTPA245, LTPC245, CAPC245, LTPH245	TP-322L	58	30	9	(9)	10	-
CAPD345, LTPD345, LTPV345	TP-V341L	80	48	9	(28)	10	-
LTPV445	TP-341L-1	112	48	9	(28)	10	-
CAPD247, LTPD247, LTP01, LTP02, LTPG247, LTPF247	TP-211C-1	58	48	12	(25)	10	✓
LTP04, CAPD347, LTPD347, LTPF347	TP-312C-1	80	48	12	(25)	10	✓
LTP2242	TP-521C	60	48	12	(25)	10	✓
LTP2342	TP-312C-1	80	48	12	(25)	10	✓
LTP2442	TP-451C-1	112	48	12	(25)	10	✓
DPU-3445	TP-341L-1	112	48	9	(28)	10	-
	TP-343L-3 (High proof paper)	112	48	9	(28)	10	-
DPU-D2	TP-211C-1	58	48	12	(25)	10	✓
DPU-D3	TP-312C-1	80	48	12	(25)	10	✓
DPU-12	TP-201C-1	58	38	9	(18)	10	✓
DPU-30	TP-211C-1	58	48	12	(25)	10	✓
DPU-411, DPU-412, DPU-414	TP-411L-3	112	48	9	(28)	10	-
	TP-411L-4	112	48	9	(28)	10	-
DPU-H245	TP-H241L	58	25	9	(7)	10	-
DPU-E247	TP-E23C-1	58	80	12	(65)	10	✓
APU-G247	TP-E23C-1	58	80	12	(65)	10	✓
APU-F247	TP-E23C-1	58	80	12	(65)	10	✓
SAM-1245	TP-322L	58	30	9	(9)	10	-
MTP102	TP-102C-4	38	28	11.2	(8)	10	✓
MTP201	TP-202L-4	58	25	9	(7)	10	-
MTP401	TP-312C-1	80	48	12	(25)	10	✓
	TP-401L-4	80	40	9	(20)	10	-
STP211	TP-211C-1	58	48	12	(25)	10	✓
	TP-211C-3	58	48	12	(25)	10	✓
STP312	TP-312C-1	80	48	12	(25)	10	✓
STP411	TP-451C-1	112	48	12	(25)	10	✓

Low Voltage

24 Volt

POS Printer

Mobile Printer

Smart Label Printer

Other Models Line up

Thermal Printer

Product Catalog 2023



Anytime, Anywhere!!

SII Thermal Printer

<https://www.sii-ps.com>



SAFETY PRECAUTIONS

1. This catalog provides a summary of product specifications. Before using each product, please thoroughly read the technical manual, user's manual, and other manuals which have been prepared by us.
2. The products listed in this catalog are not allowed to be used as part of any life-support system or any other equipment or system which requires extremely high reliability, without our permission in writing.
3. When using each product, thoroughly understand the specifications of the product, observe the descriptions and markings for prevention and avoidance of danger, on your products and in the documents such as the manual, and advise and guide your customers (users).

● GENERAL NOTES

1. Because of our continuous research for improvements, the contents in this catalog may be changed without prior notice.
2. Since the photo of each product is printed, the color of the photo may be different from that of the real product. Before use, please check the actual color of the product.
3. Concerning the use of information, drawings, etc. in this catalog, we shall not guarantee the industrial property, intellectual property, and other rights of a third party or grant their licenses. Accordingly, we will not assume responsibility for violation of the third party's rights attributable to such use.
4. No part of this catalog may be reprinted, reproduced or used for other purposes without our written permission.
5. Warranty is limited to the product unit delivered. We will be exempted from responsibility for any damage which may be caused by any defect of this product.

- ▲ iPhone, iPad, iPod are trademarks of Apple Inc., registered in the U.S. and other countries.
- ▲ IOS is a trademark or registered trademark of Cisco in the U.S. and other countries and is used under license.
- ▲ ESC/POS™ and ESC/P™ are registered trademarks of SEIKO EPSON Corporation.
- ▲ Windows™ and Windows Mobile™ are the registered trademarks of Microsoft Corporation (USA).
- ▲ Android™ is a trademark of Google Inc.
- ▲ Linux® is a registered trademark of Linus Torvalds in the United States and / or other countries.
- ▲ Company and product names are trademarks or registered trademarks of their respective companies.
- ▲ We have completed making all of our printers compliant with the RoHS directive.

Printed in Feb. 2023



Seiko Instruments Inc.
Print System Div.
8, Nakase 1-chome, Mihama-ku
Chiba-shi, Chiba 261-8507, Japan
Telephone:+81-43-211-1106 Facsimile:+81-43-211-8037

Seiko Instruments U.S.A., Inc.
21221 S. Western Ave., Suite 250, Torrance, CA 90501, USA.
Telephone:+1-310-517-7778 Facsimile:+1-310-517-7779

Seiko Instruments GmbH
Siemensstrasse 9 D-63263 Neu-Isenburg, Germany
Telephone:+49-6102-297-0 Facsimile:+49-6102-297-222
E-mail : info@seiko-instruments.de

Official site <https://www.sii-ps.com>

Seiko Instruments Trading (H.K.) Ltd.
4-5 / F, Wyler Center 2, 200 Tai Lin Pai Road, Kwai Chung,
N.T., Kowloon, Hong Kong
Telephone:+852-2494-5160 Facsimile:+852-2424-0901

Seiko Instruments Taiwan Inc.
2F., No. 143, Changchun Rd.,
Taipei, Taiwan R.O.C.
Telephone:+886-2-2563-5001 Facsimile:+886-2-2563-5580